

SHARNFORD NEWS

1st June 2022

Issue No 81

A Project supported by Sharnford Parish Council.

Sharnford Golden Jubilee Committee



The Sharnford Village Fete

IS BACK !!!!

celebrating the

Queen's Platinum Jubilee

ON THE PARK

SUNDAY 12th JUNE

12 - 4

*all the usual stalls, games & fun
a day to bring our community together & hopefully
raising funds for village causes*





UNACCEPTABLE

Malicious damage and upsetting incidents in Sharnford are virtually unheard of. But it is happening:

Somebody is going into Sharnford Cemetery and disturbing mementos on graves. This has happened several times and is very upsetting for relatives.

The Park fence has been installed within the last few weeks at a total cost of £10,000 and has already been damaged purposely by a 9/10 year old child, a girl. Slats have been removed and a parish councillor had to come out on a Sunday afternoon to carry out repairs.

This is unacceptable and the Police have been informed and are investigating.



SHARNFORD SICK AND DIVIDEND FUND

The Sharnford Sick & Dividend Fund are planning to hold an ad Hoc late summer raffle we have quite a few prizes for this. It will hopefully be no fancy tickets and just confined to Sharnford village.

The aim of this is to keep the current price at £1 for a book of tickets at our main annual Christmas raffle, whilst not being short of funds we have to plan ahead. The cost of the festive food bags has increased, most of these increases have been absorbed through canny shopping and generous funding and donations.

I'm sure we are all aware of the cost-of-living expenses increasing at a rapid rate, not a subject I wish to dwell on. The biggest problem is the cost of the festive food bags in 6 months' time when Christmas arrives, over the last few years prices in most cases have remained static on the more popular items because of competition between the super markets. Maybe by that time things will have stabilised price wise and we will have a clearer picture when the time comes.

Thank you for your continued support.

Jack Feast

SHARNFORD PARISH COUNCIL CHAIRMAN'S REPORT

This time next year (2023) we will have just completed local elections for parish and district councillors. Looking back over the last 12 months of Sharnford News, what has your parish council achieved?

June 2021

The Hinckley National Rail Freight Interchange (HNRFI) developers dragged their heels on entering formal consultation. What should have started in March 2021 did not begin until January 2022. We now await for Tritax, the developer, to enter a formal application to the Planning Inspector.

Blaby District Council issued their Blaby Local Plan Options Document which confused many residents who thought it was the final plan with many fields being concreted over for housing and industry. This was only a consultation, setting out potential development in the district. The final plan will only be adopted in August 2023, so there is plenty of time for us all to have our say.

In May 2021 we had a local by-election to choose a new district councillor, at the same time there was a referendum to adopt the Fosse Villages Neighbourhood Plan, which was overwhelmingly accepted with an 85% majority vote in favour.

September 2021

The Youth Club/Community Hall has seen improvements over the last 12 months with some financial help from the parish council, using your money which is received each year via council tax, developer contributions from new housing in the village, and a bequest from a lady's estate who lived in the village. A change of management has seen many functions and groups taking advantage of the hall making use of the new central heating, resurfaced car park and renewed fencing.



December 2021

With developer contributions, the worn out tarmac paths at Saint Helens church have been replaced and 3000 bulbs planted, all at no cost to the village. On a negative note, an application to erect a 20 metre high telephone mast on Aston lane was approved by Blaby District Council. The District Council had little choice with only nine objections being received. The parish council objected, giving one of the reasons that there are floods in the area, despite this, the construction company turned up unannounced and started digging the hole, and sure enough, it filled with water. Local knowledge is a marvellous thing.

The Local Government Boundary Commission has carried out a review of Blaby District Council and recommended that Blaby District Council reduced the number of councillors from 39 to 36. This means a change in district wards, currently we are in Stanton and Flamville ward together with Aston Flamville, Wigston Parva, Sapcote, and Stoney Stanton, represented by three district councillors. The recommendation is that the ward loses Stoney Stanton but gains Elmsthorpe, represented by two district councillors. The ward might change to Fosse High Cross, which reflects the 18th century monument at the southernmost tip of Sharnford parish. The final decision on changes will be made by the Commission on the 5th of July with changes happening at District Council elections in May 2023.

March 2022

The HNRFI consultation took place with the revised deadline of 8th of April. Sapcote and Sharnford employed a consultant to produce a report on our behalf. Many villages have objected to the development, including Leicestershire County Council and Blaby District Council. Blaby District council have declared the latest publication “deeply flawed” on the basis of transport modelling along with air quality, traffic and noise impacts.

The pollution in Soar Brook, with human excrement and wet wipes, is nearing a favourable conclusion with the homeowners who have incorrectly installed a toilet being informed and instructed to reconnect their toilet correctly.

Before and After School Club based at Sharnford Youth Club



Sharnford Kids Club

Starting for
new school
term August
2021

4-11 years
Sharnford
Primary School
Pupils

activities:

- ✓ CRAFTS
- ✓ GAMES
- ✓ ACTIVITIES
- ✓ LEGO/TOYS
- ✓ BAKING

contacts:

☎ Louise 07976509507
sharnfordkidsclub@hotmail.com
f Sharnford Kids Club

Children will be walked up to school
and picked up after.. Snacks Included.

Sharnford parish council have now taken over responsibility for maintaining the grass verges in and around the village from Leicestershire County Council (LCC), and also purchased The Park on Park View from Blaby District Council (BDC) for one pound! We are now able to keep the village looking neat and tidy, apart from the continuing dog fouling and littering. **Residents need to take pride in their village, pick up your litter and clear up after your dog.**

The Environment Agency have been busy over the last few months repairing the riverbank along the footpath to Fosse Meadows and lately removing silt from the riverbed. This should aid water flow and hopefully prevent flooding. Who remembers the flood in 2012?



SEW AND STITCH

Clothing alterations and repairs

What we offer:

- Coats
- Dresses
- Trousers/Jeans
- Soft furnishings including curtains and zippers

Contact: Renata,

07756476621



The Future

After a poorly attended volunteer day we have had to make the decision not to have hanging baskets in the village. Without volunteers we can't water them, and we can't get them installed.

When you read this there may be a new parish council chairman, or not, depends on who is voted in by your parish councillors. Whoever is in the chair you can count on your counsellors continuing to look after the interests of Sharnford for the next demanding 12 months, ensuring that we keep a watching brief over:

- HNRFI application to Planning Inspector.
- Blaby District Local Plan submission.
- Local planning applications and their effect on the village.
- Continuing traffic speeds and increase in vehicle numbers.

Residents are always welcome to attend parish council meetings, held on the 3rd Thursday of every month, in Sharnford Evergreen Hall at 7:30 PM. At the meeting you are able to raise concerns and ideas to be discussed at future meetings by your council.



Sharnford Garage Ltd

M.O.T WHILE-U-WAIT

**We test cars, light vans,
motorbikes and 3 wheelers**

Full Service & Repairs on all

Makes Petrol and Diesel

Courtesy cars Available

Leicester Road, Sharnford

01455 272336





AUTOFIT AUTO ELECTRICS

We specialise in private and commercial vehicle improvements: tow bar fitting, vehicle tracking, vehicle cameras, vehicle alarms and parking sensors

Telephone: 07377 538186

Web: autofitautoelectrics.co.uk

Email Address: autofitter@gmail.com

For up to date information about the Sharnford Parish Council go to Facebook or website at www.sharnfordparishcouncil.co.uk

Name	Email	Responsibilities
Mike Shirley	mike.shirley@sharnfordparishcouncil.co.uk	
Jack Feast (Vice Chairman)	jack.feast@sharnfordparishcouncil.co.uk	Poors Meadow, Flood Warden
Gary Peryer	gary.peryer@sharnfordparishcouncil.co.uk	Drains, Snow Warden
Lee Martin	lee.martin@sharnfordparishcouncil.co.uk	Sharnford Cemetery
Martyn Dalton- Brown	martyn.dalton-brown@sharnfordparishcouncil.co.uk	Play/Fitness Equipment Poors Meadow, The Park
Rosemarie Simpson	rosemarie.simpson@sharnfordparishcouncil.co.uk	St Helens Churchyard
Steve Waters	steve.waters@sharnfordparishcouncil.co.uk	Bluebell Green, Streetlights
Karen Leck	clerk@sharnfordparishcouncil.co.uk	

Mike Shirley, Chairman – Sharnford Parish Council

W J EDGE & SON BUILDERS LTD

BUILDING CONTRACTORS

Phone: 01455 271321 Mobile: 07831 181079

Residential & Commercial, New Developments,
Extensions, Alterations, Hard Landscaping

Estimates Free

SHARNFORD GOLDEN JUBILEE COMMITTEE VILLAGE FETE

Village Fete 12th June 2022

It's been 20 years since we held our first village fete to celebrate the Golden Jubilee. After a 2-year absence, due to the pandemic, the Fete returns just in time to celebrate the Queens Platinum Jubilee. This is a great opportunity for the village to get together again.

The fete committee's motto over the years has been "by the village, for the village" with all funds raised being shared between the various village groups. In 2012, the year of the Diamond Jubilee, the groups decided to put all of the fete profits towards the building of the new Youth Club/Community Hall which had begun in that year.

Since 2002 there have been some memorable themes including, Caribbean, Rock & Roll, Sports Extravaganza, Space and Come Dancing. Who can forget the very wet and windy Wild West theme complete with flying gazebos!

Over the years a traditional set of attractions and stalls including the tombola, bottle stall, duck races, bouncy castle, children's crafts, BBQ and bar have become fete favourites. Some attractions have come and gone over the years such as Beat the Goalie, Plate Smash, Smack the Rat, Skittles and Maggot racing, but there's always plenty to have a go at.

In addition to the stalls, we have had live music during the day from groups including St Mary's Marching Band, Redmoor School Steel Band and more recently "Take It From the Top". We also hold several activities throughout the day in the central arena, these have included dog agility, line dancing, football skills, kids races and the famous Tug-of War, which is making a return this year, so get your teams together.

SHARNFORD EVERGREEN HALL



There is a main hall, with tables and chairs, a small meeting room, toilets, including disabled, stage and a fully fitted kitchen with crockery and cutlery, cooker for reheating (but not for full cooking)

**£12 per hour for casual hire
Regular Groups enjoy a reduction in rates**

Charity events are discretionary but usually village charity events are free or by donation

We now have a digital projector and screen. These can be hired for the showing of films etc at a fee of £10 per session. All licences are in place for the showing of films.



This year's fete theme is a classic red, white and blue jubilee theme. Please feel free to dress up and come and join in. If you cannot make it on the day, please show your support by buying a raffle ticket, or having a duck in one of the duck races. Let's make the 2022 fete one to remember

Sue Stanley Fete Secretary 01455 273861

SHARNFORD EVERGREEN CLUB

It has been great to see our regular fortnightly tea meetings return after the Covid time and we will be having lunch out in June to celebrate the Platinum Jubilee. If you would like to join us ring Carol on 271591 we would love to see you.

Carol Hunter, Chair

UKRAINE – A BIG THANK YOU

I would like to thank everyone in Sharnford



who recently supported a delivery of medical and personal products to Ukraine at Easter. Within 2 weeks we donated half a van load of products to help the Ukrainian people.

I saw a plea for help on Thurlaston village web page. A large van was driven to the Polish Boarder over the Easter Holiday by the brother of a Sharnford resident. He delivered medical, personal hygiene and baby products. Thanks to everyone who helped and supported this at such a terrible time for the Ukrainian people.

Rosemarie Simpson



Tai Chi with Soul

Broughton Astley Village Hall - Monday 1.30 - 2.30pm

George Ward Centre, Barwell - Tuesday 7.00 - 8.00pm

Gentle movements matched to breathing. Focused relaxation.

£6.00 per class.

Contact Malcolm on 07708 324008 or 01455 324008

..... or just turn up and see what's it all about.



WALKIES

GOING BACK TO WORK AND WORRIED ABOUT LEAVING YOUR PET AT HOME?

MBF are able to provide a number of services for you and your pets: We can provide help with the following plus more:

- Individual and group walks
 - Pet sitting
 - House visits
 - Vet visits
 - Plus more

Call 07821 752 585
for more details or go to

www.mbfwalking.co.uk

Email: alex@mbfwalking.co.uk





SHARNFORD VILLAGE SHOW

RETURNS 10TH SEPTEMBER 2022

We are delighted to announce that after an unavoidable gap the Show returns on Saturday 10th September and as usual at The Evergreen Hall. We have simplified a few things but basically it's the same show. We are pleased to be back when a large show, the Broughton Astley one has now folded.

If you are on our mailing list a copy of the show schedule has been emailed to you. If you have not had yours one is available from the Post Office, contact us on FaceBook or ring me on 272532 and I will get a copy to you. Start planning what you will grow to enter. If you are new to the village or haven't entered for a while, come along and join us. It's all a bit of fun with a friendly atmosphere.

We continue to look for village projects to support. If you have a project or major expense for something which will benefit the village please come forward to discuss. We will need to see a costed plan and to know if you will also be raising funds from other sources.

A final reminder. If you want to be sure of entering, please get your entry form in by Wednesday 7th September. Late entries and additions will be accepted on the day subject to space. You do not need to pay until the day. So support your village and enter our show or, just come along to view, have a cuppa and enjoy.

Tony Curtis, Email: 123tcurtis@gmail.com

Your village team: Kaye & Andrew, Debra, Sheila, Alan, Barbara, Janet & Tony.

Jon Warner & Son Construction Building Contractors

**New Developments, Extensions and Alterations
Insurance Work Undertaken**

**For a Free Quote
Tel: 01455 274509
Mobile: 07930 322034
Local Family Business Est.: 1990**

ST HELEN'S CHURCH With St Mary's Wigston Parva



We held a joint service with the Methodist Church at St Helen's on Easter Sunday followed by an Easter Egg Hunt in the churchyard. On the 3rd May Zoe and Khris from the village were married in the church – a wonderful celebration.

On Sunday 5th June, we will be hosting a joint service with All Saints Church, Sapcote joined by our friends from Sharnford Methodist Church.

In the afternoon of the 5th June, there will be Cream Teas in the Church to celebrate the Platinum Jubilee of the Queen between 3 and 5 pm.

The weekly services are as follows

Date	Service	Location /Time
5 th June	Family worship	St Helens, 10AM
12 th June	Worship	Methodist Church 10AM
19 th June	Holy communion	St Helens, 10AM
26 th June	Worship	Methodist Church 10AM
3 rd July	Family worship	St Helens, 10AM
10 th July	Worship	Methodist Church 10AM
17 th July	Holy communion	St Helens, 10AM
24 th July	Worship	Methodist Church 10AM
31 st July	<i>No service</i>	<i>No service</i>
7 th August	Family worship	St Helens, 10AM
14 th August	Worship	Methodist Church 10AM
21 st August	Holy communion	St Helens, 10AM
28 th August	Worship	Methodist Church 10AM



**THE QUEEN'S PLATINUM JUBILEE
CREAM TEA
SUNDAY 5TH JUNE
3-5 pm
ST HELEN'S CHURCH
SHARNFORD**





Abbey Farm Self-Catered Cottages, Wolwey

A peaceful farm stay in tranquil
surroundings
Airbnb 5* rated

01455 220322

abbeyfarm.org.uk



Whether for business or leisure, Abbey Farm is the choice for the discerning traveller. Each self-catering cottage has under floor heating, a wood-burner, fitted kitchen and en-suite bathroom

SHARNFORD HISTORY

The Rise and Fall of Eagle Willett, Gentleman.

The central core of any successful 'would-be' family historian is playing detective. It was especially true in the case of researching the life of Eagle Willett - whose name appears on a flat slate tombstone, adjacent the porch doorway of St. Helen's church. Research, brought with it rich rewards, stretching all the way from Sharnford to Santa Rosa, California.

A few **clues** here to begin our search - the flat tombstone of Eagle Willett. It reads '**In Affectionate Remembrance**



of Eagle Willett, Gent, who died March 12 1857 Aged 78'. The tombstone piqued my curiosity. Why were his remains placed in close proximity, in such a prominent position close to the southern wall of the church usually reserved for the high status burials? Was he Sharnford born? Was he a large benefactor of the church? We shall see.....

Eagle Willett's story begins to unravel. Born the first child of eight to Field and Ann (nee Eagle) Willett at Brandon, Suffolk - his baptism 21 Mar: 1778. On 29 Sept: 1795 we can read **below** on a Register for Duty an early reference to Eagle (with his father Field Willett) when they paid duty for an apprentice - Josh Garner - for their grocery business.

19 d: 95	22 John Beales	Northwold, C. of d: Carpenter	John Hooper
29 Sept: 95	23 Field & Eagle Willett	Shelford, C. of Norfolk, grocers &c	Josh Garner
10 Oct: 95	24 John Richardson	Feltwell, C. of d: Millwright	Geo: Green
22 Dec: 95	25 Wm: Cowey	Long Melford, C. of Suffolk, Taylor	Wm: Turner

The grocery business continues to expand (now draper and grocer) with the acquisition of further property - a Deed of Messuage in 1798 states that now Eagle's younger brother Robert (18) joins the business and his name is upon this Deed also.

A giant leap forward in 1801 when the father Field Willett, and his two sons , Eagle and Robert, acquire the Greyhound Inn, Thetford, Norfolk - and turn it into a bank! It becomes the Norfolk & Suffolk General Bank. Now the halcyon years begin for Eagle Willett between 1801 and 1822.

He marries Sophia Mathews on the 7 July 1808 at Ixworth, Suffolk and fathers 7 children between 1809 and 1818 (3 boys and 4 girls). Home is 'a fine house with chaise- house and stabling' at Thetford St. Peters.

	Place of Freehold.	Occupiers.
Willett Eagle	Thetford St. Peter	Himself

Above - from the Thetford 1817 Pollbook and Electoral Register.

1822 - Bankruptcy! With over 30 properties and businesses in the Willetts possession - these were to be all stripped away as creditor's actions and law suits followed. Reverberations reach the London Inn law courts and even the House of Commons.

One such law suit was Kent v Eagle Willett of 1824 with concerns about misappropriation of funds'*Eagle Willett instead of paying such sum to the house of Perring & Co, opened an account in the books of himself and partners, in their said bank at Thetford, the sum of 409L 6s. 10d'. (£36,332 today).*

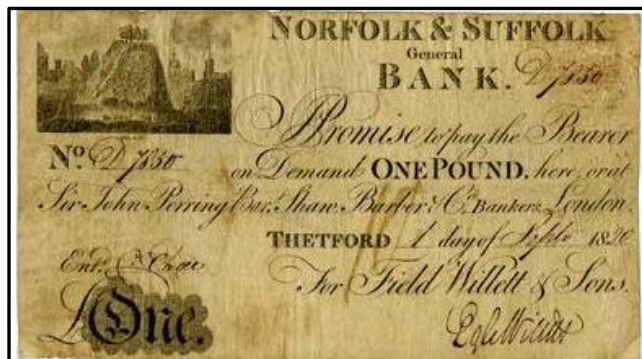
BANKRUPTS.

MICHAEL HERALD SMITH, Burslem, Stafford, draper
solicitors, Williams and Co. No. 9, Old Buildings, Lin-
coln's-Inn.

**FIELD WILLETT, EAGLE WILLETT, and ROBERT
WILLETT, Thetford, Norfolk, bankers, Solicitors, Bla-
grave and Co. Symond's Inn, Chancery-lane.**

JAMES HUDSON, Ulverston, Lancaster, victualler. So-
licitor, Blakelock, Serjeant's-Inn, Fleet-street.

The net outcome of court actions was to leave father and his two sons homeless, penniless and declared bankrupts.(from the London Gazette 30 Apr: 1822).



Right - from the British Museum Collection - a rare one pound note issued by the Willett's bank bearing the signature of Eagle Willett dating 1st. Sept: 1820 . Provincial banks like that of the Willetts could



issue their own paper money which was normal for most banks in those days.

Eagles' travails continue. Daughters Sophia (13) and Elizabeth (12) are sent away to Henry and Mary Willett (Eagles brother) at Lightwoods Hall , Harborne , Staffs. The girls were to divide their time between Lightwoods and **Wigston Parva Hall**, Leics, which were both owned by their uncle Henry Willett. During Elizabeth's teenage and formative years she was to meet with young Thomas Joseph Clarke Harris of the **Shades, Sharnford**, whose parents land, bordered on **Wigston Parva Hall** - and in later years they were to marry at Harbourne church, Staffordshire - this marriage becomes germane to our tale.

The next clues to Eagle's whereabouts appear in the Norfolk Register of Electors – for the years 1835, 1837 and 1847 - Eagle and his wife Sophia appear at a new address - St. Stephens, Norwich.

Above- **Sophia, wife of Eagle Willett** (1781-1866). After the death of her husband Eagle in March 1857, Mrs Willett went to live with her other daughter, Mary, wife of the vicar of Theydon Bois, Essex.



The 1841 census reveals **Eagle** (shown above) to be trading as a wine merchant with a household containing two female servants.

Elizabeth Willett (Eagle and Sophia's daughter) married Thomas J.C. Harris, a Justice of the Peace and son of a

Sharnford Pre-school

Free places for eligible 2, 3 and 4 year olds
Wrap around and holiday care available

Call:

07495 432569

www.sharnfordpreschool.co.uk

Manager - Mrs Nikki Gower Ofsted Registered by Petite Academy Ltd

Available Mondays, Wednesdays and Fridays between 9:00 to 14:00

Holiday care available provided by local Nurseries and child-minders



prosperous Hinckley hosiery manufacturer - 15 May 1835, at Harborne, Staffordshire. The marital home was to be the **Shades**, Coventry Road, and Sharnford. (**Shown here left**) where Thomas Harris was born. His mother was Mary Ann Harris *nee* Clarke whose parents Thomas and Sarah Clarke commissioned the Shade to be built in 1780.

The young couple's marriage, however, was all too brief for Thomas J.C. Harris died 13 Nov: 1839 - leaving behind his wife Elizabeth pregnant and with three small children.

With the death of her husband Thomas J.C. Harris - Elizabeth's elder unmarried sister Sophia Ann Willett (1809) came to stay or was already in residence as a companion for the birth of Elizabeth's now fatherless child at the **Shades**. Sophia Ann was to remain here until she married at St. Helen's church 30 Jan: 1849 to Wm. Wilkinson of Burbage - a would- be curate. The census of 1851 provides us with this illuminating description of William- 'Clergyman of the Church of England without care of Souls'. William came good though - from trainee curate to eventually a Canon!

Right - Elizabeth Harris *nee* Willett (1810-1884).

Below - Thomas Joseph Clarke Harris (1811-1839).



Both Thomas and Elizabeth were devout Christians and were committed to good works in Sharnford and

Wigston Parva villages - more so and with a deepening interest by Elizabeth after the death of her husband. The high esteem with which the Harris family were held appears fleetingly between the covers of the Letts family bible. Thomas Letts (1802-1856) was a farm labourer for the Harris estate - the

Sharnford Over 60s Youth Club

Everybody welcome – Join in a relaxed and enjoyable morning with friends!

Table Tennis, Bridge, Bowls and Darts

Coffee & Biscuits!

Every Wednesday: 10.00-12.00

In the Youth & Community Centre



bible reads...'*Master Thomas Clark Harris Died in November the 13 at 10 o'clock at night 1839*'. The bible today is in the care of his Gr.gr.gr. granddaughter Jean Perkins of Aston Flamville.

For the wedding of Sophia Ann and Wm.Wilkinson (the curate), the remaining Willett's were present for the celebrations - and stayed on permantly at the **Shades** - until the death of Eagle Willet there in 1857. St. Stephen Norwich held sad memories for both Eagle and his wife for

daughter Harriet (13) and son Eagle Matthew (22) both died at that address.

The Sharnford census for March 1851 records the Willett family at the **Shades**. Widowed daughter Elizabeth Harris (40), her three children - Sophia Eliza (13); James Edward (12) and Thomas Joseph Clarke (10). Elizabeth's parents Eagle and Sophia and sister are present - Eagle Willett (73), described as a retired wine merchant, his wife Sophia (71), and unmarried daughter Mary (32). It required three servants to look after their needs, one of whom was the cook, unmarried Sharnford lady Elizabeth Pridmore (36). Elizabeth Pridmore married 25th December 1852 here at St. Helen's, to John Hill - a happy and contented man!.

Postscript

In deference and such was the love and affection for her uncle Henry Goodrich Willett - Elizabeth and Thomas Harris named their first boy child - Henry Goodrich Clarke Harris. Uncle Henry owned both houses below and it is where Elizabeth and sister Sophia Ann were to spend many formative years.

Lightwoods Hall, Staffs. C.1900



Wigston Parva Hall, Leics.



***** With thanks to Richard Parry-Jones of Santa Rosa, California - a Harris descendant - for access to his wonderful phographic collection.

SHARNFORD ARMS

A Leicestershire Dog Friendly pub of the year winner



Opening hours

Monday – Thursday 16:30 to 23:00

Friday 16:30 to 00:00

Saturday 12:00 to 00:00

Sunday 12:00 to 22:00

Beer token £35.00 for
10 beers

Regular music
events

Chinese Restaurant and take away service Tue to Sat 5:00 to 10:00

DOGS ALWAYS WELCOME THROUGHOUT

We welcome your thoughts and ideas. What would you like to see
at the Sharnford Arms? please email us at

silkiesharnford@gmail.com or join us on Facebook to see all events
and read all about us on Tripadvisor



SHARNFORD EVERGREEN CLUB

Open to anyone over 60 who lives in the
Village or the surrounding areas

Come and join us at the Hall in Sharnford - meetings twice monthly on Wednesdays 3-5 pm. Full high tea enjoyed at each meeting. We have a full three course hot meal Annual Dinner and a Fish and Chip supper in September.

ALL WELCOME - Why not come and join us and while away a friendly afternoon in good company. New members are always welcome

Contact Jean Dale on 274772 or Carol Hunter on 271591

SHARNFORD LADIES GROUP

In March, David Goldsmith gave us a very interesting illustrated talk on the 'Beauty of Nature' with many of the slides taken locally. In April, Trudy Field, one of our members, entertained us with the story of her life entitled, 'Only a Lass from Lincolnshire'. She is an expert in British Sign Language

and has signed in many famous places including Westminster Abbey and for many famous people.

In May the two Janets challenged us to spend £400 by pricing a series of antiques, the winning team were very pleased!

In June we are having an afternoon tea for the Queen's Jubilee. In July Sue Drage is talking about 'Recycling with a Difference', when she will be demonstrating what she makes with recyclable items. In August Alan Coltman is giving us a travel talk about one of his trips.

The group meet on the first Wednesday of every month In the Evergreen Hall at 7.30pm, visitors are very welcome at a cost of £4 to include coffee and biscuits.

Lynda



SHARNFORD SCHOOL PTA

On the 26th April 2022 we held our village Easter egg hunt and cake sale. We raised in total £263, thank you all who took part and thanks you for the kind donations from parents, community members and local businesses.

The planned PTA Nature trail on the 25th June is **postponed until further notice.**

Kelly, Email: sharnfordpta@asasps.org

To advertise in the **SHARNFORD NEWS** please contact us:

Editorial Team: Ian 699051, and Jean Ryan 615820

Treasurer: Dave Sewell 272901

Email: sharnfordnews@gmail.com

**Deadline for articles for the next issue of Sharnford News is the
Wednesday 17th August 2022**

SHARNFORD EVERGREEN HALL



In March we held our Fairtrade Bacon Buttie morning and this year we raised over £600 which was sent to Action Aid. A great effort for one morning

We hope to hold one of our Bacon mornings in aid of the people of Ukraine. Hopefully we will have similar support from the village as we did for Fairtrade a small way in which we can help at this terrible time.

Our bacon buttie dates are

Saturday 25th June 2022
Saturday 13th August 2022

HELP REQUIRED TO RUN THE EVERGREEN VILLAGE HALL

Can you join the committee and help to run our Evergreen Village Hall. Many of our committee members have been involved for up to 50 years in running the hall and will soon be retiring. It is not an onerous commitment and we would love to see new village people involved with us. Ring Rosemarie on 274158 or 07831 371515 if you can help in any way.

Sharnford Post Office and Village Store

Convenience Store, Newsagents
and Post Office

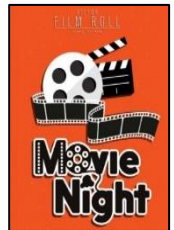
Gay and Eric welcome your
custom

All the usual Post Office facilities
including Cash Deposits and
Withdrawals on all major
Bankcards

Open 7 days Tel. 01455 272210

CINE CLUB

Unfortunately the new volunteer who came forward to run the Cine Club has had to step down due to work pressures and travel involved.



Rosemarie Simpson

Fine Ales and Freshly Prepared Food all served in a relaxed and friendly atmosphere.

Senior Citizens Menu

available Tuesday - Saturday 12.00-2.00pm

£5.95

FOOD SERVED

12.00-2.00pm & 6.00-9.00pm Tuesday, Wednesday & Thursday
12.00-9.00pm Friday and Saturday

Tuesday & Wednesday – Traditional Pub Grub

Thursday – Tapas and Homemade Pizza Night

Friday & Saturday - Traditional Pub Grub

Sunday - Lunch served 12:00 – 16:00

**THE
BRICKLAYERS**

*- a family run pub,
offering a warm and friendly welcome*

23 Leicester Road, Sharnford, Hinckley LE10 3PP

Tel: 01455 271799



All menus available on our website at
www.thebricklayers.org



Members
Discount



VILLAGE BUS TIMES (MONDAY TO SATURDAY ONLY, X55 route)

Hinckley via Aston Flamville & Burbage (stop near Bricklayers)

07:56	08:56	11:41	14:31	17:31	19:36
-------	-------	-------	-------	-------	-------

Leicester via Sapcote, Stoney Stanton, Thurlaston, Enderby & Fosse Park (stop opposite Bricklayers)

05:35	06:50	09:45	12:30	15:30	18:15
-------	-------	-------	-------	-------	-------

MOBILE LIBRARY – ROUTE 13

	Location	Start	End
Sharnford	Halls Crescent	09.30	10.10
Sharnford	Evergreen Hall	10.15	10.45
Wigston Parva	Village Centre	14.35	14.50

Visits on the 4th Monday of each month - 0116 305 3619

SIX ACRES COUNSELLING

Old ways, changing times, new approaches.

Sorting through confusing or conflicting thoughts and emotions.

Searching for an understanding.

Getting it off your chest.

Person Centred Counselling for adults, young people and children.

Please contact Malcolm Soulsby on

07715 178874 / 01455 324008

or email 45sixacres@gmail.com

OVER 60s YOUTH CLUB

The Sharnford over 60s Youth Club continues to make encouraging progress. The table-tennis and indoor bowls activities are thriving, providing great opportunity for light exercise in a very sociable environment.

Regrettably the Bridge Table has seen little use in recent weeks as it is not always possible to find the four players needed. Indeed, if there is anyone out there who would enjoy an occasional game in a very light-hearted, informal and non-competitive setting...you would be most welcome. In fact, we could even undertake to teach the basics of the game if Bridge is a card game you've not played before.

The Over 60s Youth Club is an informal drop-in group which meets 10-12 on Wednesday mornings in the Youth & Community Centre in Park View. You don't need to "join", you just "drop-in" when you want to. There is a charge of £1.50 each time you come and ALL of that is contributed towards the running costs of the premises (more than £1,000 in the past twelve months).

So, feeling active? Come and join in the fun. Just want coffee and a chat? So do many of our regulars! Don't sit around at home – get up and go! Or rather, COME!

Derek Gibbons



Cleaning Service

- **Regular Cleaning**
- **Deep Cleaning**
- **End of Tenancy Cleaning**
- **Ironing**
- **Oven, Fridge/Freezer Cleaning**
- **Shopping**

Contact Aga on 07570643687

Sparkling Dust

The advertisement features a cartoon illustration of a woman cleaner on the right side. She is wearing a red headscarf, a red apron over a white shirt, blue jeans, and yellow gloves. She is holding a long-handled squeegee and a green hose. A blue bucket with a yellow handle and a yellow sponge is on the floor next to her. The background is a light blue wall with a grid pattern.

BLABY DISTRICT COUNCIL

The below table contains the current local planning applications that have been submitted to Blaby District Council that effect the village of Sharnford and are at the decision stage. For further details please visit <https://www.blaby.gov.uk/planning-and-building/planning-applications/search-for-applications/>

Reference	Address	Proposal
22/0350/HH	2 Fox Hollies Sharnford Leicestershire LE10 3PH	Single storey rear extension
22/0254/FUL	5 Halls Crescent Sharnford Leicestershire LE10 3PL	Erection of one pair of semi-detached dormer bungalows, associated access, parking and amenity space
22/0253/FUL	Land North Of 27 Halls Crescent Sharnford Leicestershire LE10 3PL	Erection of one pair of semi-detached dormer bungalows, associated access, parking and amenity space, along with the erection of a detached double garage
22/0235/FUL	The Close Aston Lane Sharnford Leicestershire LE10 3PA	Change of use of agricultural land to form an extension to existing haulage yard (Use Class B8) to provide an additional parking area with associated landscaping and binding to the north and east
22/0106/HH	9 Butler Close Sharnford Leicestershire LE10 3QE	Single storey rear extension
21/0449/HH	West View Bumble Bee Gardens Sharnford Leicester Leicestershire LE10 3PP	Two storey front and side extension

SHARNFORD COMMUNITY CENTRE

MONDAY	BREAKFAST CLUB	07:45 - 08:45	Sharnford Kids Club
	AFTER SCHOOL CLUB	15:15 – 17:15	Sharnford Kids Club
	ART & CRAFT CLUB	TBC	TBC
TUES	BREAKFAST CLUB	07:45 – 08:45	Sharnford Kids Club
	YOGA	10:00 – 11:00	Yoga with Adele
	AFTER SCHOOL CLUB	15:15 – 17:15	Sharnford Kids Club
WEDS	BREAKFAST CLUB	07:45 – 08:45	Sharnford Kids Club
	OVER 60'S YOUTH CLUB	10:00 – 12:30	Derek Gibbons
	AFTER SCHOOL CLUB	15:15 – 17:15	Sharnford Kids Club
THURS	BREAKFAST CLUB	07:45 – 08:45	Sharnford Kids Club
	AFTER SCHOOL CLUB	15:15 – 17:15	Sharnford Kids Club
FRIDAY	BREAKFAST CLUB	07:45 – 08:45	Sharnford kids club
	YOGA WITH ADELE	10:00 – 11:00	Yoga with Adele
	AFTER SCHOOL CLUB	15:15 – 17:15	Sharnford Kids Club
	YOUTH CLUB	TBC	TBC
SAT	TOTS FOOTBALL CLUB	09:30 – 12:00	Footicubs

Contacts

Yoga with Adele – Adele 07837 927227 yogawithadele@live.co.uk

Sharnford Kids Club – Louise Moore 07976 509507

Over 60's Youth Club – Derek Gibbons 01455 272401

Footicubs – info@footicubs.co.uk

The hall can also be hired for weekend functions, please contact me 07825 924506

Laura - Sharnford Youth & Community Centre

SHARNFORD VILLAGE INFORMATION SHEET

Organisation	Contact	Details
Blaby District Cllrs.	Iain Hewson 273957 Deanne Freer 07530 319637 Mike Shirley 07539 994707	
Community Centre	Laura 07825 924506	
Doctors-Broughton Astley	(01455) 282599	Evergreen Hall Thurs 12 - 13:30
Doctors-Burbage	(01455) 634879	Evergreen Hall Tue 11-12
Doctors-Stoney Stanton	(01455) 271442	
Evergreen Club	Jean Dale 274772	Wednesdays twice monthly
Evergreen Hall	Margaret Sanders 274038	
Flood Warden	Jack Feast 274678	
Golden Jubilee Fete	Sue Stanley 273861	
Good Neighbour Scheme	Direct Help Line 07502 615535	
Leics. County Councillor	Mrs M Wright 07815 450031 Mrs.M.A.Wright@leics.gov.uk	
Methodist Chapel	Local Pastor Anne Haddon 617692,	
Over 60's Youth Club	Derek Gibbons 272401	Community Centre Weds 10 - 12.30
Parish Council Chair	Mike Shirley 07539 994707 mike.shirley@sharnfordparishcouncil.co.uk	Meetings held 3 rd Thursday at 19.30 Evergreen Hall
Parish Council Clerk	Karen Leck 07422 718186 clerk@sharnfordparishcouncil.co.uk	
Parish village website	www.sharnfordparishcouncil.co.uk	
Post Office	Eric and Gay Washbrook 272210	
Sapcote Library	Lorraine 3053674	
St. Helen's Church	Rev TBA, Cynthia Oliver 272977	
Sharnford Ladies Group	Wendy Kendall 273889	1st Wednesday of month
Sharnford Pre-School	Alison Lancaster 07495 432569	Evergreen Hall
Sharnford Primary School	Mrs S Boyd-Hope, Acting Head teacher & Secretary 272456	
Sharnford Traffic Action Group (STAG)	Mike Shirley 07539 994707	
Sharnford Village Show	Tony Curtis 272532	