

SHARNFORD NEWS

1st March 2022

Issue No 80

A Project supported by Sharnford Parish Council.

HINCKLEY NATIONAL RAIL FREIGHT INTERCHANGE

Tritax Symmetry, the developer, began formal consultation with residents who live within 3km radius of the proposed development on 11th January 2022. Invitation letters were sent out on 27 December 2021. Needless to say, not all residents received letters even though we have been assured 51,000 were sent out. Hopefully Sharnford residents received theirs and a sizeable proportion of us were able to attend one of the nine consultation displays.

Tritax are obliged to inform the Planning Inspectorate of all feedback they receive. The Planning Inspector is the person who makes the decision to either approve or refuse the planning application. I would implore as many people as possible to give feedback to Tritax by post or email. You can also use the feedback form issued by Tritax, but it is clearly biased in favour of development. Did those who attended the displays find the lack of information both striking and extremely disappointing? This has led to Leicestershire County Council and Blaby District Council formally writing to Tritax, complaining that consultation should not be taking place until more detailed facts and figures are available.

Sharnford and Sapcote Parish Council have joined forces to employ a consultant who will produce a report on our behalf. Stoney Stanton have their own consultant. Our consultant has the remit to look at transport and pollution issues, and more importantly the reason why a Rail Freight Interchange should be built there in the first place. Government policy is to build a national network of strategic rail freight interchanges (SRFI's) but the regulations stipulate that they should be built **CLOSE TO THE MARKET THEY ARE INTENDED TO SERVE.**

Look at the map on the following page and see the overlap of existing Rail Freight Interchanges, with most of them serving the West Midlands. By calling the proposed warehousing a National Rail Freight Interchange the developers are circumnavigating traditional local council planning controls with the final decision being made by the



Secretary of State. Tritax have stated that up to 16 freight trains per day will transport over 1200 containers into the site. It is expected that this will result in 10,000 plus vehicles in and around the site each day with 8400 staff, 2500 HGV's and innumerable white van delivery vehicles. Will there be 16 trains per day? Within the Midlands are a number

of unsuccessful rail terminal schemes – Birch Coppice, which is lucky to see one train per week; Prologis Park, Coventry has only seen one, maybe two trains; East Midlands at Castle Donnington, according to Network Rail has never seen a revenue earning incoming freight train.

While the developers proclaim thousands of jobs, landscaping works, ecological mitigation, footpath, and cycleway links which will be nice for the people working there, exactly what constitutes a 'strategic' element? And seven 'strategic' sites within 50 miles plus, of course, the largest distribution site in Europe, Magna Park.

For those who say this is a 'done deal' there could be light on the horizon. Plans for a rail freight interchange in the North Yorkshire countryside have been dismissed on appeal. The decision comes after the Planning Inspector, appointed by the government, concluded that the proposed development was in conflict with both local and national planning policy. In his written decision, the planning inspector, said he had taken into account the rural area and the proximity to nearby settlements, "it is physically and visually separated from existing and permitted employment development", he said "the appeal proposal would result in a significant encroachment of built development into open countryside".

The formal statutory consultation stage on HNRFI is extended from the 9th March 2022 to a new deadline 8th April 2022.

Respond to consultation via hinckleyrifi@lexcomm.co.uk

Post to: c/o Lexington Communication, 3rd Floor, Queens House, Queen St., Manchester M2 5HT

Website: www.hinckleyrifi.co.uk

It is also worth noting that this proposed development is nothing to do with the "land west of Stoney Stanton" proposal, the planning of up to 5000 homes

around Stoney Stanton and Sapcote. Either developments will have massive impacts on our local area, further details of this proposal can be found here <https://stoneystanton.co.uk/land-west-of-stoney-stanton/>

TIME TO GET WALKING AGAIN!

At this time of year we start to think about the mud drying up and getting out to walk in the beautiful English Countryside again, but where to find new and interesting walks?

Walking in Leicestershire <https://www.walkinginengland.co.uk/leics> has hundreds of walks to download and print, free, it also has books of walks, details of all the walking groups in the county and much more. Whether you want to walk on your own or with a group all the information is there in one place. John Harris (the custodian of the website) said 'There is so much walking information on the web but it is difficult to find. Walking in Leicestershire (part of the Walking in England website) has brought it together in one place so whether you are walking from home, or away on holiday, you will be able to find a walk suitable for you'. With walks from half a mile to twelve miles plus long, and a note of suitability for pushchairs and wheelchairs, everyone can find a walk to enjoy. So home or away, check out the websites and get walking!

John Harris john@walkinginengland.co.uk

Sharnford Over 60s Youth Club

Everybody welcome – Join in a relaxed and enjoyable morning with friends!

Table Tennis, Bridge, Bowls and Darts

Coffee & Biscuits!

Every Wednesday: 10.00-12.00

In the Youth & Community Centre



W J EDGE & SON BUILDERS LTD

BUILDING CONTRACTORS

Phone: 01455 271321 Mobile: 07831 181079

Residential & Commercial, New Developments,
Extensions, Alterations, Hard Landscaping

Estimates Free



WALKIES

GOING BACK TO WORK AND WORRIED ABOUT LEAVING YOUR PET AT HOME?

MBF are able to provide a number of services for you and your pets: We can provide help with the following plus more:

- Individual and group walks
 - Pet sitting
 - House visits
 - Vet visits
 - Plus more

Call 07821 752 585
for more details or go to

www.mbfwalking.co.uk

Email: alex@mbfwalking.co.uk



SHARNFORD GOLDEN JUBILEE COMMITTEE VILLAGE FETE

Village Fete 12th June 2022

The fete committee held a virtual Annual General Meeting on Tuesday 25th January 2022 at 7.30pm. At the meeting, after a unanimous vote, it was decided that there would be a village fete this year to celebrate the Queens Platinum Jubilee. Fete day will be **Sunday 12th June**, 12 until 4 at the park in Park View so please save the date.

Details have yet to be finalised but we are expecting to have lots of the familiar attractions such as raffle, duck races, BBQ, bar, live music and lots of stalls and activities. We will publish more details in the next couple of months so look out for leaflets through your door, notices on the notice boards around the village and also on social media.

We are always grateful for help in organising the fete. If you would like to attend the meetings, then they are held monthly in the run up to fete day at the Evergreen Hall. We also need help on the day in getting the park ready in the morning, helping to run the stalls and attractions and also in clearing up at the end of the day. If you would like to volunteer, then please give me a call.

Let's hope the weather will be kind to us as it has been in previous years, and we can make this a fete to remember.

Sue Stanley Fete Secretary 01455 273861



SEW AND STITCH
Clothing alterations and repairs
What we offer:

- Coats
- Dresses
- Trousers/Jeans
- Soft furnishings including curtains and zippers

Contact: Renata, 23
Coventry Road, Sharnford
07756476621

SHARNFORD EVERGREEN CLUB

We have been quite busy since the last report starting with the Christmas bacon buttie morning which was hectic - in a good way. Our thanks to all who worked so hard and who supported this event. Also in December we held our annual bingo social which is always a fun afternoon. This was followed by a Christmas lunch at The Bricklayers: good food and good company.

In January we went to the Concordia pantomime. It was just wonderful and everybody loved it. On 5th February we held the first bacon buttie morning of the year and it was very well attended as always - our thanks to everyone.

The Club is open to anyone over 60 who lives in the village and surrounding area. We meet every two weeks on a Wednesday for quizzes, games and afternoon tea. Annual events are: fish and chip supper in September, Christmas lunch, pantomime in January, dinner in the Spring and afternoon tea in August. New members are always welcome, so if you would like further information about joining us please contact Jean Dale on 274774. We look forward to seeing you.

Carol Hunter, Chair

Before and After School Club based at Sharnford Youth Club



Starting for
new school
term August
2021

4-11 years
Sharnford
Primary School
Pupils

activities:

- ✓ CRAFTS
- ✓ GAMES
- ✓ ACTIVITIES
- ✓ LEGO/TOYS
- ✓ BAKING

contacts:

☎ Louise 07976509507
sharnfordkidsclub@hotmail.com
f Sharnford Kids Club

Children will be walked up to school
and picked up after.. Snacks Included.



THE SHARNFORD GOOD NEIGHBOUR SCHEME

In the coming months, we remain hopeful that the Sharnford Good Neighbour Scheme will be able to return to offering its full range of support, as and when it is practically possible and safe to do so - fingers crossed everything continues to move in the right direction regarding coming out of the pandemic.

Currently we are still available to help with things such as: picking up prescriptions, small gardening jobs, or you might like to hear a friendly voice via our telephone befriending service as this can be very lonely time.

To request support please call our dedicated phone number: 07502 615535 to speak to the Good Neighbour Scheme Co-ordinator. They will then find a volunteer to help with your request, and call you back to confirm who will be providing the support. Please note all our volunteers will be wearing an identity badge.

We are a registered charity, and have all the necessary policy and procedures in place including Covid safe regulations, to ensure the health & safety of our volunteers and its users.

Please also note that the Sharnford Good Neighbour Scheme, along with other key voluntary groups that support the village, will be holding a **Volunteer Open Day** (one Saturday morning in the next couple of months), with the aim of recruiting more volunteers. You will have the chance to meet volunteers from each of the groups, find out more about the work we do, and hopefully join us in offering whatever support and time you have. Look out for the leaflet which will be coming through your door soon.

Edwina Grant – Chair Sharnford Good Neighbour Scheme Steering Group.

Jon Warner & Son Construction Building Contractors

**New Developments, Extensions and Alterations
Insurance Work Undertaken**

**For a Free Quote
Tel: 01455 274509
Mobile: 07930 322034
Local Family Business Est.: 1990**



SHARNFORD VILLAGE SHOW

It's been two years without a Show, 2022 is the year we hope to get back to normal. We are cautiously optimistic that we can go ahead with the Show and keep everyone safe. We know how popular any event at the Evergreen is. So we are planning for a Show on Saturday 10th September 2022. By the next issue of the Sharnford News we should have a show schedule out. So whether your entering Fruit, Veg, handicrafts, baking or preserves there will be a category you can enter, enjoy and hopefully win. Or just come along to view, but don't be shy, why not enter.

A reminder that we still have funds available for village projects. If you have something in mind let us have your proposal. We try to support projects benefiting the village, rather than individuals, though we did support the School Summer Lunch Club last summer to support many families.

Let's all hope for a more normal 2022 and more details for the Show in the next

issue. Date for your diary Saturday 10th September. Details also on our Facebook page.

Your village team: Kaye & Andrew, Debra, Sheila, Alan, Barbara, Janet & Tony.

SHARNFORD EVERGREEN HALL



There is a main hall, with tables and chairs, a small meeting room, toilets, including disabled, stage and a fully fitted kitchen with crockery and cutlery, cooker for reheating (but not for full cooking)

£12 per hour for casual hire
Regular Groups enjoy a reduction in rates

Charity events are discretionary but usually village charity events are free or by donation

We now have a digital projector and screen. These can be hired for the showing of films etc at a fee of £10 per session. All licences are in place for the showing of films.



Tai Chi with Soul

Broughton Astley Village Hall - Monday 1.30 - 2.30pm

George Ward Centre, Barwell - Tuesday 7.00 - 8.00pm

Gentle movements matched to breathing. Focused relaxation.

£6.00 per class.

Contact Malcolm on 07708 324008 or 01455 324008

..... or just turn up and see what's it all about.



ST HELEN'S CHURCH With St Mary's Wigston Parva

Over the past months we have continued to enjoy joining with our friends from Sharnford Methodist Church for a service each week. The first and third Sundays are at St Helen's and the second and fourth at The Chapel. We have welcomed visiting clergy for our Communion Service and lay preachers and leaders from both

churches. Our thanks go to all who have led our joint worship each week. These are the special dates during the next months

6 th March 2022	Family worship at St Helens
13 th March 2022	Service at Methodist church
20 th March 2022	Holy Communion at St Helens
27 th March 2022	Mothering Sunday Service at Methodist church at 10:00am. Mothers of all ages will be very welcome on this special day
3 rd April 2022	Family worship at St Helens
10 th April 2022	Service at Methodist church
17 th April 2022	Easter Sunday Holy Communion at St Helens at 10:00
17 th April 2022	Easter Sunday family service at St Marys, Wigston Parva at 15:00
24 th April 2022	Service at Methodist church
1 st May 2022	Family worship at St Helens
8 th May 2022	Service at Methodist church
15 th May 2022	Holy Communion at St Helens
22 nd May 2022	Service at Methodist church
29 th May 2022	No service
5 th June 2022	Queens Jubilee Weekend Cream Teas at St Helens at 15:00

ST HELEN'S CHURCH NEEDS YOU!!!

We don't need your money, WE NEED YOU. We no longer have a vicar and our congregation is diminishing rapidly. Leicester Diocese are having a major reorganisation and churches like St Helen's are in great danger of being closed.

Rosemarie Simpson



Abbey Farm Self-Catered Cottages, Wolvey

A peaceful farm stay in tranquil
surroundings
Airbnb 5* rated

01455 220322

abbeyfarm.org.uk



Whether for business or leisure, Abbey Farm is the choice for the discerning traveller. Each self-catering cottage has under floor heating, a wood-burner, fitted kitchen and en-suite bathroom



CAR CLUB GREEN FOX COMMUNITY ENERGY

I have recently been in contact with Green Fox, a Leicester based environmental charity about the possibility of starting a car sharing club for Sharnford with funding provided. So if you find the local bus service inadequate and occasionally need a car, a car club in the village could provide the possibility of renting a car for an hour or a day at a reasonable cost, when you need it.

This extract from the Sustainable Transport website Sustrans explains in more detail. For this to proceed further we need to see what interest there is in Sharnford. If there is sufficient interest then Green Fox will bid for funding to provide an electric car for the village and a charging point. So not only, the possibility of being able to hire a car at a fair price but also the chance to drive an electric car.

Why join a car club? "A car club offers the convenience of being able to use a car for those trips you cannot do by using public transport, cycling or walking. Car clubs can provide a great alternative to car ownership as you get access to a car without having to own one. There are other benefits too: no car tax or fuel to pay, no MOT or car servicing to worry about – all you pay for is a membership and car hire. If you're a low-mileage driver then you could benefit financially from joining a car club - members who drive less than 6-8,000 miles per year could save up to £3,500 a year. You'll be dramatically reducing your impact on the environment, too.

Car club cars are more environmentally friendly, emitting over 20% less CO2 per kilometre than the average car, and they are used more efficiently. One car club car replaces over 20 private cars, helping to reduce traffic jams and free up parking spaces" to see if this is a viable alternative for you, search for your nearest cars on the Carplus website and find your nearest car club to get an idea of the cost and convenience. If you are interested you will find a link to the survey on the Parish Council Facebook page. This is a great opportunity if we can show sufficient interest. So if you could benefit from a Car Club you need to complete the survey. Completing the survey does not commit you to any financial outlay.

If you do not have access to a computer to complete the survey ring me and I will print one off for you. If you want any other information I will endeavour to get this for you.

Tony Curtis, 01455 272532



Stories & Rhymes

For the under 5's

Every Tuesday

(Term Time Only)

10.30am—11am

Sapcote Community Library,
Church Street

Come with your children and share
Stories, Songs & Rhymes

FREE – DONATIONS APPRECIATED



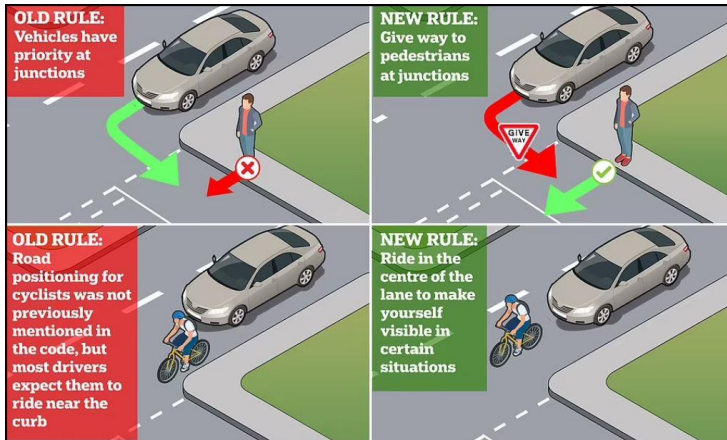
SHARNFORD TRAFFIC ACTION GROUP – STAG

Changes to the Highway Code – 2022

Unless you've recently passed your driving or motorcycle theory test, chances are it's been a fair while since you swatted up on the finer points of the Highway Code. Well, now's your opportunity, the Highway Code has changed.

The 2022 updates affect driver priority, pedestrian and cyclist rights of way, mobile phone use behind the wheel and broader use of fines for poor or dangerous driving.

The changes which came into force on 29 January 2022, giving road users a couple of weeks' grace before any contravention of the new rules that will be penalised. We expect strict



enforcement of the new rules by way of a) highlighting their existence and b) generating revenues. It's worth apprising yourself of both the new and existing rules of road users. We're not going to go into the whole Highway Code, but below, we've detailed the rule changes and the penalties you might face for non-compliance, whether you're a motorist, cyclist, or pedestrian. The biggest notable change—likely coming into play in anticipation of Autonomous Vehicles (AVs) — the law will require 'those who can do the greatest harm to others to have a higher level of responsibility

to reduce the danger'.

Rule H1 sets out explicitly the creation of a hierarchy where HGV drivers will be more liable than minibus drivers, which will be more liable than passenger car drivers, and so on. Pedestrians are the most vulnerable.

SHARNFORD EVERGREEN CLUB

Open to anyone over 60 who lives in the Village or the surrounding areas

Come and join us at the Hall in Sharnford - meetings twice monthly on Wednesdays 3-5 pm. Full high tea enjoyed at each meeting. We have a full three course hot meal Annual Dinner and a Fish and Chip supper in September.

ALL WELCOME - Why not come and join us and while away a friendly afternoon in good company. New members are always welcome

Contact Jean Dale on 274772 or Carol Hunter on 271591

Drivers no longer have priority at junctions

Before: Drivers had priority at junctions unless the other road user was halfway across the junction.

Now: If you're turning at a junction and there's a cyclist, horse-rider, pedestrian, or scooter, ready or preparing to cross, these more vulnerable road users have right of way.

Gripe: There's no formal responsibility put onto other road users to ensure they are staying focused on risk in their environments. The language states "Cyclists should respect your safety (see Rule 62) but you should also take care not to obstruct or endanger them. Always remain aware of your environment and avoid unnecessary distractions." Pedestrians will still step into the road with their eyes focused on their mobile phones.



Penalty: *If an incident occurs, the fault will automatically lie with those 'who can do the greatest harm' unless proven otherwise. Liability falling on you will affect your insurance, there could be possible court costs and depending on the severity of the incident, fine, penalty points and/or jail time.*

All traffic must stop for pedestrians waiting at crossings

Before: Rule 195 stated cyclists, drivers and horse riders only had to stop at zebra and parallel crossings if someone was already walking across, with an advisory to slow down on the approach to a zebra crossing, in anticipation of pedestrians.

Now: The Code has been updated so cyclists, horse-riders and motorists are legally required to stop at zebra crossings if people are waiting to cross, not just if they are already crossing.

Gripe: In our nation of jaywalkers, there's no requirement for pedestrians to cross using formal crossings.



Penalty: *Those waiting may report the registration of a vehicle blasting through a zebra crossing to the police, with multiple witnesses. There's no shortage of people willing to whip out a phone or submit dashcam footage of drivers breaking the rules, so contravene this easy and reasonable request at your peril. It'll earn you a fine and penalty points if the police catch up with you.*

Cyclists can ride wherever they feel most visible

Before: To date, cyclists have only been mandated to ride on the left (i.e. not against the flow of traffic) and ensure bike lights are used at night. They are advised to wear visible clothing and a helmet.

Now: Cyclists are required to ride no less than half a metre from the verge or kerb, 'further where it is safer'. Motorists must pass cyclists with at least 1.5 metres space up to 30mph; more distance is required for higher speeds. Cyclists are expected to pull to the left on quieter roads, in slower-moving traffic and at busy junctions, to maximise safer overtaking opportunities.



Gripe: There's no legal requirement for cyclists to use cycle lanes where provided. Much of the legislation relies on all road users making good judgement calls, which seems a bit ambiguous. The opportunity has been lost to make it mandatory for all cyclists and horse riders to wear high visibility clothing.

Penalty: *Since the number of cyclists wearing bodycams has increased, it's likely there'll be a veritable wave of more reckless drivers being reported to the police with evidence. With greater legal powers to protect cyclists, police may make a concerted effort to charge them, resulting in penalty points and the obligatory fine. They could also keep tabs on repeat offenders.*

Drivers must wait for a safe gap in the flow of cyclists

Before: There was no explicit requirement for drivers to treat cyclists as though they were other vehicles, simply tacit guidance.

Now: Motorists are advised against turning in such a manner as to 'cut across' cyclists' right of way, and explicitly asked to consider cyclists like another motor vehicle.

Gripe: The majority of motorists exercise this kind of caution and consideration already. But this won't necessarily stop certain cyclists from running red lights. And, yes, while cyclists are legally supposed to stop at red lights, just like everyone else, there is no ANPR system to note *their* misdemeanours.



Penalty: *Since this is an advisory, rather than a legal requirement, the penalty will only be decided in the case of collision. Motorists are however legally required to give way and, failing to do so could result in a £70 fine (see below). Like we've said before, more cyclists are wearing bodycams so it's worth waiting the extra few seconds for them to pass safely before moving off. No amount of hurry is worth a hefty legal battle.*

All uses of hand-held mobiles are banned, except in an emergency

Before: The use of mobile phones to call and text has been banned since December 2003. The Code however didn't say anything about doing other things with your mobile though. Oh, a loophole.

Now: The 2022 update prohibits any driver from using their handheld device for anything, including taking videos or photos, scrolling through playlists or playing games—EVEN if the vehicle isn't moving. While mobile phones can be used for hands-free calls, payment at tolls or booths and satellite navigation, they'll need to be securely fixed.



Gripe: This well-overdue update finally pulls the Code in line with the Law, banning all unnecessary—and arguably dangerous—uses of mobile phones behind the wheel. Distracted driving is the second leading cause of collisions, after drunk driving. With the introduction of a hierarchy of responsibility, it perhaps would have been wise to advise other road users of their responsibility to maintain focus on their routes too.

Penalty: *In line with the revised penalties introduced in 2017, motorists face a £200 fine and six penalty points, if caught touching their mobiles during their journeys. For newly qualified drivers, six points would see newly minted licences revoked. To reinstate it, you have to go through the whole process of passing your theory and practical tests, so the whole affair is both inconvenient and expensive. What's more, if the case goes to court, you could be handed a maximum £1,000 fine and being disqualified from driving for a period of time.*

Poor driving decisions more punishable

Before: Rule 174 of The Highway Code states explicitly how yellow hatched lines, creating a box junction, 'MUST NOT' be entered unless the exit is clear. Yet, some motorists still venture into them, obstructing other traffic and creating gridlock. The joys of rush hour.

There are other minor motoring infringements such as entering Advanced Stopping Lines (ASLs), driving the wrong way up a street and not giving way to oncoming traffic (see above). To date, the only authority to correct such poor decision-making have been the police—and to be frank, they have more pressing matters.



Now: Introduced from Spring 2022, local authorities will be given more power, enabling them to fine drivers up to £70 for minor traffic offences. This will include, though not be limited to, those sitting in box junctions illegally, drivers failing to give way to oncoming traffic and motorists making a cheeky U-turn in a prohibited area.

Gripe: These multi-million pound revenue generation schemes have been in play in London and Cardiff for a while now. In 2019, the RAC reported that income surpassed £58 million—yet, our roads are still littered with potholes and other hazards. Many motorists will feel like nothing but cash cows to the Treasury, fighting to find ways of plugging a pandemic-induced deficit.

Penalty: *To catch you in the act, fixed CCTV cameras are driven around by Civil Enforcement Officers (CEOs) and corroborated by ANPR, if necessary. CEOs have already had the authority to enforce school clearways and bus stop restrictions. Though the fine is £70 nationally, in London it rises to £130. While we anticipate a 'pay early for a reduction' model, it'd spoil anyone's day to get the prosecution through the post.*

The 'Dutch Reach' is the recommended method of vehicle exit

Before: You can exit your vehicle any way you'd like, taking care to check mirrors and check over your shoulder for any oncoming traffic.

Now: In an attempt to cut the number of cyclists hit by car doors swinging open unexpectedly, the Dutch Reach is advocated. This involves the hand furthest from the door to open it. This prompts a passenger or driver to swivel their bodies and in turn, heads to look over their shoulder and be more mindful of passing cyclists.

Gripe: Bad habits are hard to break, no matter how well-intentioned the objective. This cultural shift could take generations to implement.

Penalty: *There's not a specific penalty, as this is guidance rather than law. However, you could find yourself shame-faced if you cause the injury of another. Or in hotter water, if the incident is more serious. Take care and reach across.*



The Highway Code is essential reading for all road users, including pedestrians, mobility scooter users, cyclists, horse riders, drivers and motorcyclists.

You can [pre-order a copy of The Highway Code book](#) online or buy a copy from most high street bookshops from April 2022.

Mike Shirley

To advertise in the **SHARNFORD NEWS** please contact us:

Editorial Team: Ian 699051, and Jean Ryan 615820

Treasurer: Dave Sewell 272901

Email: sharnfordnews@gmail.com

**Deadline for articles for the next issue of Sharnford News is the
Wednesday 18th May 2022**

ELECTORAL BOUNDARY REVIEW

Have Your Say on Blaby Electoral Review

The Local Government Boundary Commission wants to hear what residents and local organisations think about the proposals for new electoral boundaries, including Blaby. A 10-week consultation on the proposals will run until 11 April 2022.

The Commission is the independent body that draws these boundaries. It is reviewing Blaby to make sure councillors will represent about the same number of electors, and that ward arrangements will help the council work effectively. The Commission has published proposals for changes to Blaby. It is proposing that:

1. There should be 17 wards, one fewer than there are now.
2. The boundaries of 15 wards should change, while three will stay the same
3. There will be 3 three-councillor wards 13 two-councillor wards and 1 single-councillor ward across the district

Proposed changes include:

1. Two-councillor Enderby and Glen Parva wards and a three-councillor Narborough & Littlethorpe ward as these are based on whole parishes and secure good electoral equality while using strong boundaries
2. The creation of a three-councillor Leicester Forest & Lubbesthorpe ward. It has been necessary to create a three-member ward to absorb the large amount of development forecast for Lubbesthorpe parish which would otherwise result in a ward with very poor electoral equality.
3. Stanton & Flamville Ward including Stoney Stanton, Sapcote, Sharnford, Aston Flamville, and Wigston Parva with 3 councillors will change to a 2 councillor ward, losing Stoney Stanton but gaining Elmesthorpe. The Ward name will change to Fosse Highcross reflecting the link with the Fosse Way and the monument at the southern tip of the ward.

People can also give their views
Website: <https://www.lgbce.org.uk>
E-mail: reviews@lgbce.org.uk
Post: Review Officer (Blaby),
LGBCE, PO Box 133, Blyth, NE24
9FE



Sharnford Garage Ltd
M.O.T WHILE-U-WAIT
We test cars, light vans,
motorbikes and 3 wheelers
Full Service & Repairs on all
Makes Petrol and Diesel
Courtesy cars Available
Leicester Road, Sharnford
01455 272336

SHARNFORD ARMS

A Leicestershire Dog Friendly pub of the year winner



Opening hours

Monday – Thursday 16:30 to 23:00

Friday 16:30 to 00:00

Saturday 12:00 to 00:00

Sunday 12:00 to 22:00

Beer token £35.00 for
10 beers

Regular music
events

Chinese Restaurant and take away service Tue to Sat 5:00 to 10:00

DOGS ALWAYS WELCOME THROUGHOUT

We welcome your thoughts and ideas. What would you like to see at the Sharnford Arms? please email us at silkiesharnford@gmail.com or join us on Facebook to see all events and read all about us on Tripadvisor



SHARNFORD HISTORY

When The Civil War came to Sharnford

The drumming of countless equine hoofs, the squeaking of saddlery and harness, the jingling of accoutrements, marked the passage of Captain Flowers parliamentary mounted soldiers reverberating from the cruck and mud walls of the cottages as they passed along the only street of Sharnford. Fanciful? Not a bit of it. Flowers was here on many occasions and was once harried by the Sharnford constable for recompense for 'provinder' which he and his men availed themselves too without paying. In fact - a whole army passed through our village but more of that later.

The finding of a lead musket ball in my garden started me off on my latest quest. Another similar one was found in my neighbours garden, a hundred or so yards away. Of course we cannot say for certain if they were from the Civil War era - but the similarity in size and weight suggests a military usage - certainly not for the sportsman for use on game.



Once again thinking of the Civil War era (1642 - 1651) my research can find no recorded incident of a skirmish or fight taking place within Sharnford - but the finding of two similar sized lead balls I find most strange.

Just what part did Sharnford play during these wars?

On the 22nd, August 1642 King Charles raised his standard at Castle Hill, Nottingham. This effectively signalled the start, and the boundaries of a north/ south divide - the Royalists

to the north - the Parliamentarians to the south. Hinckley and district was to play an important part in the war due to the proximity of several rival garrisons. The supporters of King Charles at Caldicote, Ashby de-la-Zouch, and temporary at Leicester - whilst the 'Roundheads' were later at Leicester, and found at Tamworth, Coventry, Warwick Castle and several fortified large stone houses in Warwickshire. Accordingly, through many military incursions and involvement in this area, we probably suffered more, and



certainly longer, than the rest of the country as it is thought that more than 3% of the pre-war population of England perished here during the war in one way or another.

Sleepy, agrarian Sharnford being situated midway on the arterial road between Coventry and Leicester, was bound to be in the thick of it. We know that part of the Parliamentarian army travelled through Sharnford from Coventry and Warwick to surround Leicester (held by the Royalists until 1645) - and *'that a large body of soldiers lay encamped both sides of Sapcot towne'*. It was pretty well assured that our village received almost daily visits, in particular troops from the Coventry (parliamentarian) garrison looking to impress unwilling young men into war service, or, looking for horses, oxen or pigs, 'free quarter' and to avail themselves of 'dyett and beere'. They just took and never paid. Robert Day of Sharnford claimed £5 for a horse taken by Captain Mercier's men. History does not relate if he ever was reimbursed. Aston Flamville was not left unscathed either - for George Turville claimed for *'twelve strikes of oats and three strikes of peas'* worth 16s.6d. that were taken by forces from Coventry. A Mr. Hill was another claimant, who lost a horse and other items to the troops of the garrison from Astley, Warks, worth £12.

Was Sharnford for King or Parliament?

Clues are difficult to find. We know Hinckley was predominately for parliament. A clue - for I am convinced Sharnford sided with the King - was that there were no christenings and weddings in our village between Apr: 1642 and Feb: 1647. Thought to be the parson Giles Bank at that time, he had fled in fear of his life. The parliamentarians made short work of papist parsons and their ideology.

While the country was convulsed with murderous acrimony, a very fluid situation occurred with both Royalist and Parliamentarians criss-crossing Hinckley and the surrounding area. One recorded incursion by the Royalists was in March 1644 when

SIX ACRES COUNSELLING

Old ways, changing times, new approaches.

Sorting through confusing or conflicting thoughts and emotions.

Searching for an understanding.

Getting it off your chest.

Person Centred Counselling for adults, young people and children.

**Please contact Malcolm Soulsby on
07715 178874 / 01455 324008
or email 45sixacres@gmail.com**

**Sharnford
Pre-school**

Free places for eligible 2, 3 and 4 year olds
Wrap around and holiday care available

Call:
07495 432569

www.sharnfordpreschool.co.uk
Manager - Mrs Nikki Gower Ofsted Registered by Petite Academy Ltd

Available Mondays, Wednesdays and Fridays between 9:00 to 14:00
Holiday care available provided by local Nurseries and child-minders

they trawled the local villages close by to Hinckley and seized 2 protestant ministers and 30 outspoken anti-royalist villagers - mentioned are Cosby and Leire - but no doubt Sharnford came in for scrutiny too. It paid to keep your mouth shut and keep *shtum*. Hostilities came to a head by 1644, when early in that year 350 Royalist horse arrived in Hinckley with prisoners, who interned them in the stone built St. Marys church. Parliamentary forces under the command of Colonel Grey attacked the Royalists - pressing them into the Market

Place, where battle was murderously joined after which the Royalists withdrew to lick their wounds. The antiquarian Francis states that 48 prisoners were captured and at least 150 horses and many cattle taken. Colonel Grey, the Parliamentary commander wrote an account of the bloody fight *'there were slain of the enemy about twelve common soldiers'*.

What was the population of Sharnford parish during the war years 1642-1651?

There is no recorded number that I know of - but 53 houses are recorded in the *Hearth Tax, of Michaelmas 1670* - lets say, at 5 persons per house, we have a figure of a 265 population. If we take a population of 151 from the 1603 *LibeCleri: Communicants & Rercusants* (literally a head count of all who attended Sharnford church), we are not too far adrift, saying perhaps the total population of our parish was no more than 250 people. Interestingly, looking to an earlier population census from the *1377 Poll Tax* - we see the figure of 132 - all of which confirms that Sharnford remained just a small village and low population for some 300 or more years.

Apart from Robert Day (who had his horse taken by Capt. Merciers men), do we know names of any of the inhabitants of Sharnford during the war years?

We know the names of the freeholders (those who were property landowners) in 1630 who were recorded as Robert Bray, John Tarleton, John Dowes, John Bent and William Briggs. John Tarleton was here through the war years - for he had a daughter Elizabetha christened here in Feb: 1647. Further identified to the war years are Gullemi & Graciae Bray; brothers Thomae & Richard Garle; Thomas & Ellen Ward; the Biggs family (at least 5 children known); Edward & Elizabetha Warden - they had a daughter Elizabetha christened here 20 Apr: 1640. Edward the father died in 1646 - his name appears in a will and probate. Johannes Gilla - a daughter was christened here Feb: 1641; Guliemi & Alicia Highnot; his brother Joannes and his wife Hanna

Highnot; Johannis & Elizabetha Onely; Richardi & Katherinae Dafferne; Essau & Anne Marshal; Thos. & Ellen Ward - their daughter Ellen was the last child to be christened in April 1642 prior to the hurried departure of parson Giles Bank. Of two family names above - the Brays and the Garles - we can trace their roots back to Tudor times and forward to more modern times.

Right - artefacts attributed to the Civil War period. Human toe bones, cannon and musket balls, buckles, flints, and seals of spirit bottles were found in a garden at Lutterworth..

Sources - Bibliotheca Topographica Britannia (pub. 1790) J.F.Collins - A History of Leicestershire during the Civil War(pub.1890). Hugh A. Bevin - The Book of Hinckley (pub.1983). Sharnford's Parish Records (Wigston Record Office).



SHARNFORD LADIES GROUP

In December the ladies group were entertained by Four Play, an a capella group who sang and did a quiz about the music they were singing. Mince pies and mulled wine was also enjoyed as a start to the festive season. In February the AGM was held.

In March David Goldsmith will give an illustrated talk on the 'Beauty of Nature', in April Trudy Field will be entertaining us with a talk entitled 'Only a Lass from Lincolnshire' and in May The Two Janets will be helping us to realise we can have 'Fun with Antiques'. In June we will be having an afternoon tea to celebrate the Queen's platinum jubilee.

The group meet on the first Wednesday of each month in the Evergreen Hall at 7.30pm and visitors are very welcome at a cost of £4 to include coffee and biscuits!

Lynda



RUSSELL BURROWS
Plumbing & Heating Services

Central Heating Gas Installation
Bathrooms, Leadwork
Roofing & Building Services
Maintenance
Servicing & Repairs

Tel: 01455 271441
Mobile: 07947 787455



SHARNFORD EVERGREEN HALL



We held our first bacon buttie morning in 2022 on the 5th February and it was good to see everyone again although a few regular faces were missing due to having contacted Covid-19 the week before. We wish everyone well again and list below the forthcoming Bacon Buttie dates in the near future

Saturday 5th March 2022 – Charity Bacon Morning in aid of Fairtrade

Saturday 30th April 2022

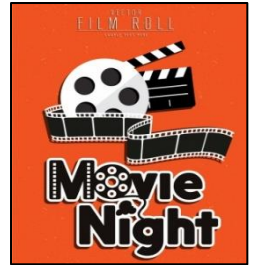
Saturday 18th June 2022

Our Christmas Bacon morning on the 11th December attracted a great crowd and we thank all who participated and helped on that day. All the money raised goes towards keeping the hall up to date and spotless and all hiring enquiries are managed by Margaret On 274038 or Rosemarie on 274158 if Margaret is not available.

CINE CLUB

We are pleased to be able to report that hopefully the Cine Club at the Hall will once again be operating. Progress will be made in the next couple of months and notices of dates etc will be advertised.

Rosemarie Simpson



AUTOFIT AUTO ELECTRICS

We specialise in private and commercial vehicle improvements: tow bar fitting, vehicle tracking, vehicle cameras, vehicle alarms and parking sensors

Telephone: 07377 538186

Web: autofitautoelectrics.co.uk

Email Address: autofitter@gmail.com

Fine Ales and Freshly Prepared Food all served in a relaxed and friendly atmosphere.

Senior Citizens Menu

available Tuesday - Saturday 12.00-2.00pm

£5.95

FOOD SERVED

12.00-2.00pm & 6.00-9.00pm Tuesday, Wednesday & Thursday
12.00-9.00pm Friday and Saturday

Tuesday & Wednesday – Traditional Pub Grub

Thursday – Tapas and Homemade Pizza Night

Friday & Saturday - Traditional Pub Grub

Sunday - Lunch served 12:00 – 16:00

**THE
BRICKLAYERS**

*- a family run pub,
offering a warm and friendly welcome*

23 Leicester Road, Sharnford, Hinckley LE10 3PP

Tel: 01455 271799



All menus available on our website at
www.thebricklayers.org



Members
Discount



SHARNFORD PARISH COUNCIL CHAIRMAN'S REPORT



In my last report I mentioned that planning permission for the erection of a 15 metre high telephone mast on Aston Lane had been approved. This was despite Sharnford Parish Council objecting on the grounds that the area is prone to flooding, being next to the River Soar. The applicant, CK Hutchinson, lost no time in starting installation work and began to dig the hole to take the mast on Monday November 22nd 2021. Temporary traffic lights were erected causing major problems to Brindley Haulage who were unable to move HGV's in and out of their site, and the hole was dug. All done without the common courtesy of informing the Parish Council and the affected residents/businesses. Sure enough, when the hole reached 3 metres deep, it filled with water! The contractors filled the hole and left the site, stating they would be back in February 2022 to try again in a different spot. Look out for the digging company returning and let me know. The telecom company cannot dig anywhere else without re-applying for permission.

Sharnford saw an increase in Christmas lights this year with all members of the Parish Councillor walking the village to choose the best lights and decorated windows.

Cash prizes were donated by the Parish Council and two residents totalling £220. Under data protection laws we are unable to identify individual winners but can say the following roads received a 1st, 2nd, or 3rd prize: Leicester Road, Chapel Street, Chapel Lane, Park View, Brookfield, and Fosse Close.



The ongoing saga of pollution in the River Soar continues. Our Parish Clerk has invited the following to an on-site meeting to discuss who will take responsibility for clearing up this mess: Leicestershire County Council, The Environment Agency, Blaby District Council, and Severn Trent Water (STW). It will be interesting to see who turns up. Our local MP, Alberto Costa, has been kept apprised of the situation

You should have all received the leaflet concerning the update on Fosse Villages Neighbourhood Plan (FVNP) through your letter box by now. Delivered by your parish clerk and councillors, a dangerous job with yappy, snappy dogs the other side of the door, and hard to open letter boxes, mine included. Well done to our posties who manage to survive each day. The FVNP was voted on last year with an overwhelming

majority of residents in favour of accepting. During the process several Local Green Spaces were deleted by the examiner due to lack of evidence and this leaflet is to incorporate those deletions back into the plan. Our Local Green Spaces include: The Park, Poors Meadow, Bluebell Green, Parsons Lane Allotments, Sharnford Cemetery, and St Helens Churchyard. By designating these Local Green Spaces, we will be able to rule out new developments other than in very special circumstances.

If you wish to make comment then contact Sapcote Parish Council who is the administrative body for the FVNP:

Via email to: clerk@sapcoteparishcouncil.org.uk

By post to: Sapcote Parish Council, 15 William Spencer Avenue, Sapcote, LE9 4NF

From April, Sharnford Parish Council will take over maintenance of the grass verges in the village from Leicestershire County Council. This is in addition to taking over maintenance of The Park from Blaby District Council who will have sold it to us for the princely sum of £1. We will then be in control of keeping our village tidy. This means that our Precept (a tax that Parish Council's charge their local electors to meet their budget requirements) will increase by 4% to £26,650. This is a £2.16p increase on a Band D property, rising to £66.96p per year. On top of this will be precepts from Leicestershire County Council, Blaby District Council, and the Police.

For up to date information about the Sharnford Parish Council go to Facebook or website at www.sharnfordparishcouncil.co.uk

Name	Email	Responsibilities
Mike Shirley	mike.shirley@sharnfordparishcouncil.co.uk	
Jack Feast (Vice Chairman)	jack.feast@sharnfordparishcouncil.co.uk	Poors Meadow, Flood Warden
Gary Peryer	gary.peryer@sharnfordparishcouncil.co.uk	Drains, Snow Warden
Lee Martin	lee.martin@sharnfordparishcouncil.co.uk	Sharnford Cemetery
Martyn Dalton-Brown	martyn.dalton-brown@sharnfordparishcouncil.co.uk	Play/Fitness Equipment Poors Meadow, The Park
Rosemarie Simpson	rosemarie.simpson@sharnfordparishcouncil.co.uk	St Helens Churchyard
Steve Waters	steve.waters@sharnfordparishcouncil.co.uk	Bluebell Green, Streetlights
Karen Leck	clerk@sharnfordparishcouncil.co.uk	

Mike Shirley, Chairman – Sharnford Parish Council

SHARNFORD METHODIST CHURCH



Our lay pastor is Mrs Anne Haddon. She can be contacted on 01455 617692. All are welcome to join us for Morning Worship on the second and fourth Sundays of each month at the chapel, starting at 10am. On the 1st and 3rd Sundays we walk up to the church to join in the service at St Helen's. It is lovely to have such a good relationship between the two congregations and to work closely together on events and projects within the village.

Penny Ross

SHARNFORD SCHOOL PTA

As always we have been busy supporting fund raising events for the school. Our last one of the year 2021 was our silly hair/hat day. This raised £65.00 for the school. We are now planning our next events

1. Our Easter egg hunt Saturday 16th April 2022 around the village.
2. A proposed nature trail hunt 25th June 2022 around fosse meadows.

Kelly, Email: sharnfordpta@asasps.org

Cleaning Service

- **Regular Cleaning**
- **Deep Cleaning**
- **End of Tenancy Cleaning**
- **Ironing**
- **Oven, Fridge/Freezer Cleaning**
- **Shopping**

Contact Aga on 07570643687

Sparkling Dust

Sharnford Post Office and Village Store

Convenience Store, Newsagents
and Post Office
Gay and Eric welcome your custom
All the usual Post Office facilities
including Cash Deposits and
Withdrawals on all major Bankcards
Open 7 days Tel. 01455 272210

SHARNFORD YOUTH CLUB - DO WE KEEP THIS!!!

Sharnford Youth Club has been closed for a number of years, but thanks to a large Community Grant we have received from the District Council we are now on the road to reopening.

We have been able to purchase new tables,

storage furniture, sports equipment and a projector for movie nights!

We still however have a large wish list in order to get the youth club running again on a Friday night.

We appreciate any donations large or small, the children are so excited with the prospect of somewhere to meet up with their friends again.

The Sharnford Youth and Community Centre is a registered charity (502213) and available to hire for regular evening groups or parties

Laura 07825924506

Our Amazon wish list can be found here:

https://www.amazon.co.uk/hz/wishlist/dl/invite/ffJ7hy9?ref_=wl_share



**DONATIONS
NEEDED!**

Sharnford Youth Club Charity are looking for the following....

- Childrens Jigsaws,/board games
- Craft items,/childrens stationary
- Xbox 360 controllers and games
- Nintendo Wii Controllers and games
- Childrens baking equipment
- Lego, Knex, Building blocks, Scalextric

To make a donation.....
Call 07825924506
Email Sharnfordyouthclub@gmail.com
Facebook [Sharnfordyouthandcommunitycentre](https://www.facebook.com/Sharnfordyouthandcommunitycentre)

Made with PosterMyWall.com

SHARNFORD SICK AND DIVIDEND FUND

We were very lucky at Christmas last year to bring the festive food bags up to our normal standards, at one stage it was going to be pot luck on the contents, it was touch and go but thanks to the Co-op who saved the day on the Christmas pudding front and some really excellent mince pies at half price and a small amount of discount for quantity all helped the cause.

I would like to thank all the village businesses that donated a prize for the raffle and the many local supermarkets that also donated prizes. The tally of raffle prizes was further boosted by generous donations by village residents.

We had some anonymous donations, some of the money was ear-marked for raffle prizes and other amounts just general donations. The Parish Council made a healthy contribution which helped off-set some of the price rises we faced for this distribution.

We managed to sell all the raffle tickets - towards the end it was something of a struggle but nonetheless it was a sell-out. Next year could well see a modest increase in ticket prices, something that has not happened for many years.

Extended thanks go to all those that sold tickets and helped with the distribution of the food bags on the day, making the 2021 Christmas distribution a success.

Jack Feast

VILLAGE BUS TIMES (MONDAY TO SATURDAY ONLY, X55 route)

Hinckley via Aston Flamville & Burbage (stop near Bricklayers)

07:56	08:56	11:41	14:31	17:31	19:36
-------	-------	-------	-------	-------	-------

Leicester via Sapcote, Stoney Stanton, Thurlaston, Enderby & Fosse Park (stop opposite Bricklayers)

05:35	06:50	09:45	12:30	15:30	18:15
-------	-------	-------	-------	-------	-------

MOBILE LIBRARY – ROUTE 13

	Location	Start	End
Sharnford	Halls Crescent	09.30	10.10
Sharnford	Evergreen Hall	10.15	10.45
Wigston Parva	Village Centre	14.35	14.50

Visits on the 4th Monday of each month - 0116 305 3619

HUNCOTE LEISURE CENTRE TO REMAIN CLOSED

On 2nd November Blaby District Council closed Huncote Leisure Centre and the surrounding area due to the discovery of elevated levels of landfill gas, whilst undertaking routine works on the site. To monitor these elevated levels, contractors installed landfill gas monitoring and extraction wells to the rear of the leisure centre.

As a result of this further gas monitoring and exploration work, it was identified that additional monitoring wells were needed at the front of the leisure centre, and this work has just been completed. This will ensure we can collect accurate measurements of the landfill gases across the site.

It is important that any decisions made as to whether any more gas mitigation measures may be needed on the site are led by the data. We will now need to collect and analyse several weeks of gas measurements coming from the monitoring wells. Only then will our contractors be able to advise if any further steps need to be taken to make the site safe. This may include further landfill gas ventilation being installed on site. Based on this update from our contractors, we can confirm that Huncote Leisure Centre and the surrounding site is unlikely to reopen until early Spring.

We want to reassure residents living around the site that there is no immediate risk to property. Leicestershire Fire and Rescue Service have confirmed that residents no longer need to keep their windows and doors closed. However, we will regularly monitor the landfill gas levels of those properties within the vicinity of the site, whilst any work continues.

The results of the monitoring in early 2022 will enable us to make an informed decision about the timescales involved with reopening the site safely and it maybe that we can reopen some parts of the site sooner than others.

OVER 60s YOUTH CLUB

The Over 60s Youth Club continues to thrive, with much relief and satisfaction that the COVID Pandemic seems to have run its course with little effect on our activities once we overcame the isolation restrictions. We know that it has been a matter of much concern - amongst our families as well as ourselves - that comparatively elderly and therefore 'vulnerable' people (that's US) were back in action so soon after the easing of restrictions. But proper precautions were taken, equipment sanitised and social distancing observed, so no viruses caught up with us.

Unconnected with Covid, we were saddened at the passing of our one-legged farmer, Ian Fulford, who had been in hospital over the Christmas period. We send our condolences to his family and friends.

However, we are back in full swing now, each Wednesday morning 10.00-12.00, so anyone out there looking for Table Tennis, Shortmat Bowls, Bridge or simply coffee and chat...you know we are waiting to welcome you to the Youth & Community Centre.

Derek Gibbons

SHARNFORD COMMUNITY CENTRE

MONDAY	BREAKFAST CLUB	07:45 - 08:45	Sharnford Kids Club
	AFTER SCHOOL CLUB	15:15 – 17:15	Sharnford Kids Club
	ART & CRAFT CLUB	TBC	TBC
TUES	BREAKFAST CLUB	07:45 – 08:45	Sharnford Kids Club
	YOGA	10:00 – 11:00	Yoga with Adele
	AFTER SCHOOL CLUB	15:15 – 17:15	Sharnford Kids Club
WEDS	BREAKFAST CLUB	07:45 – 08:45	Sharnford Kids Club
	OVER 60'S YOUTH CLUB	10:00 – 12:30	Derek Gibbons
	AFTER SCHOOL CLUB	15:15 – 17:15	Sharnford Kids Club
THURS	BREAKFAST CLUB	07:45 – 08:45	Sharnford Kids Club
	AFTER SCHOOL CLUB	15:15 – 17:15	Sharnford Kids Club
FRIDAY	BREAKFAST CLUB	07:45 – 08:45	Sharnford kids club
	YOGA WITH ADELE	10:00 – 11:00	Yoga with Adele
	AFTER SCHOOL CLUB	15:15 – 17:15	Sharnford Kids Club
	YOUTH CLUB	TBC	TBC
SAT	TOTS FOOTBALL CLUB	09:30 – 12:00	Footicubs

Contacts

Yoga with Adele – Adele 07837 927227 yogawithadele@live.co.uk

Sharnford Kids Club – Louise Moore 07976 509507

Over 60's Youth Club – Derek Gibbons 01455 272401

Footicubs – info@footicubs.co.uk

The hall can also be hired for weekend functions, please contact me 07825 924506

Laura - Sharnford Youth & Community Centre

SHARNFORD VILLAGE INFORMATION SHEET

Organisation	Contact	Details
Blaby District Cllrs.	Iain Hewson 273957 Deanne Freer 07530 319637 Mike Shirley 07539 994707	
Community Centre	Laura 07825 924506	
Doctors-Broughton Astley	(01455) 282599	Evergreen Hall Thurs 12 - 13:30
Doctors-Burbage	(01455) 634879	Evergreen Hall Tue 11-12
Doctors-Stoney Stanton	(01455) 271442	
Evergreen Club	Jean Dale 274772	Wednesdays twice monthly
Evergreen Hall	Margaret Sanders 274038	
Flood Warden	Jack Feast 274678	
Golden Jubilee Fete	Sue Stanley 273861	
Good Neighbour Scheme	Direct Help Line 07502 615535	
Leics. County Councillor	Mrs M Wright 07815 450031 Mrs.M.A.Wright@leics.gov.uk	
Methodist Chapel	Local Pastor Anne Haddon 617692,	
Over 60's Youth Club	Derek Gibbons 272401	Community Centre Weds 10 - 12.30
Parish Council Chair	Mike Shirley 07539 994707 mike.shirley@sharnfordparishcouncil.co.uk	Meetings held 3 rd Thursday at 19.30 Evergreen Hall
Parish Council Clerk	Karen Leck 07422 718186 clerk@sharnfordparishcouncil.co.uk	
Parish village website	www.sharnfordparishcouncil.co.uk	
Post Office	Eric and Gay Washbrook 272210	
Sapcote Library	Lorraine 3053674	
St. Helen's Church	Rev TBA, Cynthia Oliver 272977	
Sharnford Ladies Group	Wendy Kendall 273889	1st Wednesday of month
Sharnford Pre-School	Alison Lancaster 07495 432569	Evergreen Hall
Sharnford Primary School	Mrs S Boyd-Hope, Acting Head teacher & Secretary 272456	
Sharnford Traffic Action Group (STAG)	Mike Shirley 07539 994707	
Sharnford Village Show	Tony Curtis 272532	