

# SHARNFORD NEWS

1<sup>st</sup> December 2020

Issue No 75

**A Project supported by Sharnford Parish Council.**

## HALLOWEEN IN SHARNFORD 2020

Halloween or All Hallows eve is recognised each year on October 31<sup>st</sup>. The tradition originates from Celtic and Pagan festivals, when people would light bonfires and wear costumes to ward off ghosts.

Over time, Halloween has evolved into a day of activities like trick-or-treating, carving jack-o-lanterns, festive gatherings, donning costumes and eating treats. In Sharnford tricking and treating is very popular, this year due to the current pandemic, trick and treating was restricted. However this did not stop the folks of Sharnford recognising this festival with their own parties and decorating their houses.



## UNDER SIEGE - UPDATE

Since the last issue of Sharnford News Issue 74, 1<sup>st</sup> September 2020, things have moved on apace.

The A46 Eastern Expressway plan, which would have cost over £1 billion, has been dropped from the Midlands' long term transport plans after officials reached the conclusion it would cost too much – and would not solve the traffic problems as well as they had hoped. I wonder how many millions it has taken to reach the same conclusion we, the Fosse Villages Neighbourhood Plan group and SELAG (South Leicestershire Action Group) have been arguing for some considerable time? The proposed route formed part of Leicestershire's strategic growth plan (SGP) which paved the way for around 40,000 homes to be built. The concern now is where will the extra homes in Blaby District be built?

The warehouse development on the A5 is causing disruption with the building of a new roundabout, causing night closures for several weeks. Once this is finished and the warehouse development is open for business expect even more HGV's joining the already overburdened B road that is the A5.

The much heralded White Paper "**Planning for the future**" has hit a Tory backlash. Some senior Conservative MPs are not happy with the thought that the South East and rural areas could be concreted over. What I say to these NIMBY (not in my backyard) MPs who want to push yet more development our way "come and visit us and see the number of warehouses, proposed houses, and wind turbines we already have". The government will look to 'rebalance' the formula but the target of 300,000 new homes across England by the mid 2020's remains undiminished.

**The HNRFI – Hinckley National Rail Freight Interchange** proposal is progressing through to a formal process. The previous consultation exhibitions have



been informal with little detail, this is now about to change. Formal consultation will start in Spring 2021 according to Blaby District Council's website. The developer Tritax Symmetry (Hinckley) Ltd expect to submit their formal application by September 2021. I encourage everyone to look at the map

and see the potential effect on Sharnford when Tritax build a connecting road from near the M69 Junction 2, close to Sapcote Garden Centre to B4114 at Sharnford Road, Sapcote. Ask yourselves the questions, Where will the lorries go when the M69 closes due to the many accidents that happen?

How will lorries get to the A5?

Down the new road (shown as Eastern Villages Link Option B in yellow) and then through Sharnford or down Aston Lane into Sharnford?



One question that seems to be ignored, what happens to all the train movements when the A5 railway bridge gets hit yet again? (Recently listed the most hit railway bridge in the UK) For more information on this project go to

<https://www.hinckleynrfi.co.uk/>

*Mike Shirley*

## REMEMBRANCE POPPIES – Can you help?

In 2018, members of the Ladies Group and others in the village knitted poppies which were fixed to a net and hung by the War Memorial each Remembrance Sunday

We use this net every year now and it is noticed that it would look much better if we had a few more poppies at the top of the net.

If anyone would like to knit more poppies that we can attach to the net it would be much appreciated. If you can help with this please give Rosemarie a call on 274158.

*Rosemarie*

**RUSSELL BURROWS**  
Plumbing & Heating Services

Central Heating Gas Installation  
Bathrooms, Leadwork  
Roofing & Building Services  
Maintenance  
Servicing & Repairs

Tel: 01455 271441  
Mobile: 07947 787455



## SHARNFORD EVERGREEN CLUB

Open to anyone over 60 who lives in the Village or the surrounding areas

Come and join us at the Hall in Sharnford - meetings twice monthly on Wednesdays. Full high tea enjoyed at each meeting. We have a full three course hot meal Annual Dinner and a Fish and Chip supper in September. We also have outside trips, go to the Pantomime in Hinckley and have occasional speakers.

### COVID 19

We are looking at when we can re-open our club and for further information contact Jean on 274772 or Rosemarie on 274158

**ALL WELCOME - Meetings are afternoons 3-5 pm**  
Contact Jean Dale on 274772

## DOG FOULING/WASTE

We are sorry to include this article within the Sharnford News, however we feel it necessary to highlight the issue in our village. Over the colder months it has become more evident of an increase in dog fouling around the village.

Within the village we are blessed with two parks and we are located next

to Fosse Meadows, these are all utilised by all villagers including children. **They should not have to avoid dog waste whilst using these facilities.**

The local council have invested/improved the facilities of the local parks, but it would be a shame if the parks were a "no go zone" due to dog waste deeming these investments a complete waste of time and money.

It is also not limited to the parks as evidence can be found in some streets and footpaths.

- Don't forget that leaving dog mess behind is actually illegal, and dog owners can be prosecuted and fined for doing so. If you spot somebody leaving dog mess behind when out on a walk, particularly if they do this regularly, this can be reported to the local council.
- Don't forget dog waste is harmful to the health of people and the land that it pollutes, as well as posing an eyesore, and potentially causing further mess, unpleasantness and inconvenience if stepped in or tracked about, particularly if it is unwittingly walked back into the home/school/local business.
- Don't forget that dog mess can carry parasites and diseases such as toxocarasis, and always wash your hands thoroughly after dealing with dog waste; even if you do not physically touch it with your bare hands.

Please can we ask dog owners to help keep our village clean and utilise the provided dog waste bins.

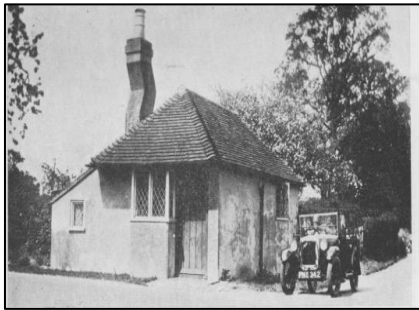
***Sharnford news team***

# TOLLGATES & MAIL COACHES

They came in all sorts of shapes and sizes, either a wooden shack or weird architectural gem...



... the quintessential English tollgate cottage. Here, a woodcut of a humble shack with the mounted rider paying his toll - to this quirky chimney on this toll cottage in West Grinstead, Sussex. The purpose of the unusually shaped chimney is not known, except for the obvious movement of smoke!



dedicated listing we are able to identify 169 tollgates cottages in Leicestershire and Rutland which is perhaps not complete.

**Right** - today the old toll cottage at Bitteswell (six miles from Sharnford) taken with my camera when I was out and about. There are still surviving examples of the golden age of coaching to be seen if you care to look about you.

## SHARNFORD EVERGREEN VILLAGE HALL



The Evergreen Hall is available for Hire 7 days a week.

There is a main hall, with tables and chairs, a small meeting room, toilets, including disabled, stage and a fully fitted kitchen with crockery and cutlery, cooker for reheating (but not for full cooking)

**£12 per hour for casual hire**

Regular Groups enjoy a reduction in rates  
Charity events are discretionary but usually village charity events are free or by donation

We now have a digital projector and screen. These can be hired for the showing of films etc. at a fee of £10 per session. All licences are in place for the showing of films.

Telephone: Margaret 01455 274038

Hard to think that there were literally many hundreds of these tollgate cottages that once were dotted over the land between the 1760's to 1870's. Although functional and providing a roof over people's heads, the survival rate of these buildings has been extremely low. From a



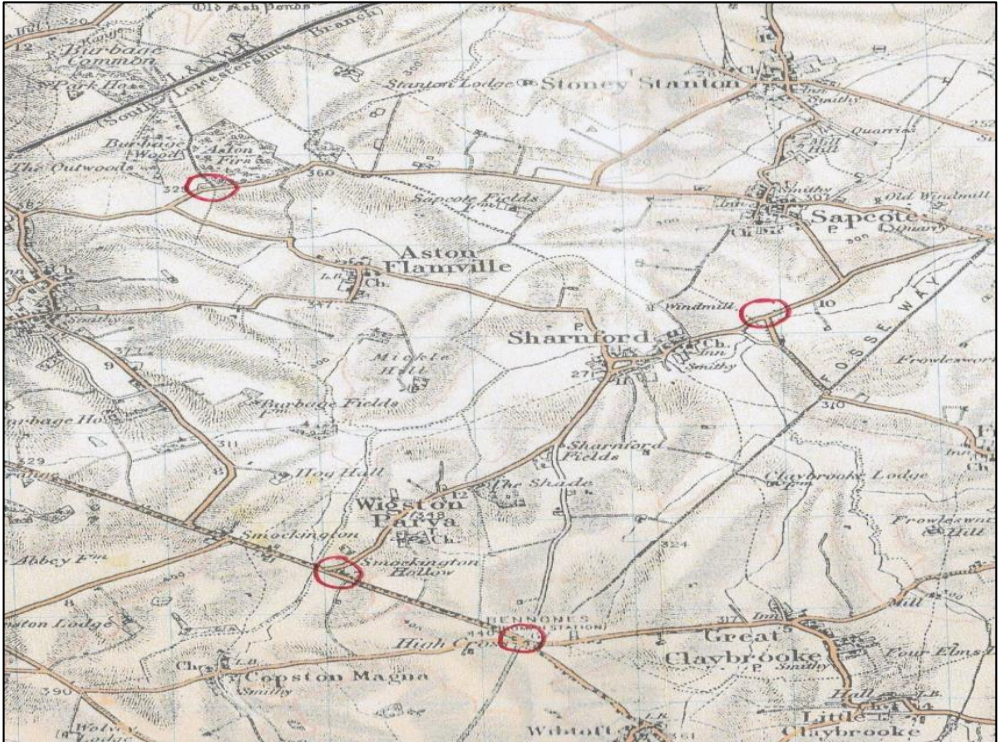
**Below** - mounted on an upstairs wall at Hinckley library, is this original beautifully preserved toll board that was once sited at the Smockington (A5) Watling Street tollgate.

<b>SMOCKINGTON GATE.</b>	
Tolls to be taken at this Gate under an Act of Parliament passed in the Fourth year of King George the 4 <sup>th</sup> for repairs and amending the Road from	
<b>HINCKLEY to LUTTERWORTH,</b>	
	<b>S. D.</b>
For every single horse, mule or other beast of draught drawing any chaise, marine coach, landau, berlin, barouche, sociale, chariot, calash, hearse, break, chaise, curriole, gig, taxel, cart, market, cart or other cart, the sum of	4
For two or three horses, mules, or other beasts of draught drawing any such carriage as above mentioned	6
For four or five horses, mules, or other beasts of draught drawing any such carriage above mentioned	1. 0
For six or more than six horses, mules, or other beasts of draught drawing any such carriage above mentioned	1. 6
For every single horse, mule, or other beast of draught or for two horses, mules, or other beasts of draught drawing any waggon	8
For every such four-wheeled carriage having the fellicies of the wheels thereof of the breadth of six inches	1. 0
For three or four horses, mules, or other beasts of draught drawing any waggon, or other such four-wheeled carriage as above mentioned	1. 6
For five or six horses, mules, or other beasts of draught drawing any waggon or other such four-wheeled carriage as above mentioned	1. 6
For more than six horses, mules, or other beasts of draught drawing any waggon or other such four-wheeled carriage as above mentioned and an additional sum of 2 <sup>s</sup> for every such horse, mule, or other beast of draught above six	8
For every single horse, mule, or other beast of draught or for two horses, mules, or other beasts of draught drawing any waggon or other such four-wheeled carriage having the fellicies of the wheels thereof of the breadth of four inches and an half and less than six inches the sum of	10
For three or four horses, mules, or other beasts of draught drawing any waggon, or other such four-wheeled carriage last above mentioned	1. 4
For five horses, mules, or other beasts of draught drawing any waggon, or other such four-wheeled carriage last above mentioned	1. 9
For six horses, mules, or other beasts of draught drawing any waggon, or other such four-wheeled carriage last above mentioned	2. 6
For more than six horses, mules, or other beasts of draught drawing any waggon or other such four-wheeled carriage last above mentioned and an additional sum of 2 <sup>s</sup> for every such horse, mule, or other beast of draught above six	10
For every single horse, mule, or other beast of draught or for two horses, mules, or other beasts of draught drawing any waggon or other such four-wheeled carriage having the fellicies of the wheels thereof of less breadth than four inches and an half	1. 6
For three or four horses, mules, or other beasts of draught drawing any waggon or other such four-wheeled carriage last above mentioned	1. 4
For five horses, mules, or other beasts of draught drawing any waggon or other such four-wheeled carriage last above mentioned	1. 9
For six horses, mules, or other beasts of draught drawing any waggon or other such four-wheeled carriage last above mentioned and an additional sum of 2 <sup>s</sup> for every such horse, mule, or other beast of draught above six	10

The top line reads..**SMOCKINGTON GATE ... Tolls to be taken at this gate under the Act of Parliament passed in the Fourth year of King George the 4th. for repairs and amending the Road ...HINCKLEY to LUTTERWORTH (the 4th. year of King George reign was 1766).**

**JON WARNER & SON CONSTRUCTION**  
**BUILDING CONTRACTORS**  
 New Developments, Extensions and Alterations  
 Insurance Work Undertaken  
 For a Free Quote  
 Tel: 01455 274509  
 Mobile: 07930 322034  
**Local Family Business Est.: 1990**

**The below map** - show the tollgates (circled in red) that totally enclose Sharnford. Hinckley had at least four on all of its approach roads. The Smockington tollgate was sited adjacent to the old Red Lion Inn (long gone) at the T-junction of the B4114 (the Sharnford road to Leicester) and the A5 (Watling Street). Smockington and Highcross tollgates were two of four on a 10 mile 'Trust' administered turnpike stretching to Lutterworth via Claybrooke and Bitteswell. Unfortunately for us - all four toll takings were lumped together but the income generated was quite lucrative and for the year 1820 we have - £768 - £51,895 today.



There was also a tollgate and house at the junction of Smithy Lane on the Sapcote to Hinckley Road which covered the approach to Burbage Common. The old tollhouse was demolished and swept away with the reforms of 1875.

Noteworthy is the toll takings for the year 1820.....£146. (£9,865 today). Perhaps one of the least known of the tollgates (and the most contentious) was sited at the Frolesworth T-junction with the Leicester Road (B4114). The knowledge comes down to us through the generations by word of mouth but unfortunately not fully substantiated at this time.

**Here -Tollgate Cottage, Highcross.** The old toll cottage that has seen many structural changes and additions through the years but some original features can still be seen to today - such as the small first- floor window to the left of the photograph: adjacent to this window are two old iron mounts where the old toll board was fixed vertically.

**Turnpike:**....a turnpike was the old fashioned name for a road or a byway with a

'pike' - the pike being a gate, bar or chain across the width of the road for the purposes of stopping mounted travellers and collecting a money toll.

It took an Act of Parliament in 1555 to try to do something about the parlous state of the roads which had remained untouched since 410AD - for as the Roman Empire declined so did the roads. The Act put the onus on individual parishes whose responsibility lay within their own boundaries for the repair and upkeep of their piece of the highway. The result was a heterogeneous patchwork of the good and the bad - where an oxen or horse drawn wheeled vehicle could travel over well metalled road or disappear up to its axles in a slew of mud.

The Government response after a further 200 years to this chaotic system was the introduction of the turnpike system. Turnpike Trusts were bodies of public commissioners set up by an individual Act of parliament that received the right of

controlling a stretch of road with powers to collect tolls. They ran their own affairs autonomously. The monies collected by the tollgate keeper were to be used to maintain the road in a more or less satisfactory condition and pay their salaries - supposedly.

But the Trusts became administratively inefficient with collected revenue



## **Sharnford Post Office and Village Store**

Convenience Store, Newsagents and  
Post Office

Gay and Eric welcome your custom

All the usual Post Office facilities  
including Cash Deposits and  
Withdrawals on all major Bankcards  
**Open 7 days Tel. 01455 272210**



nearly always falling below expectations partly due to the light fingered toll keepers, and the new national pastime of dodging the turnpike tolls - then called 'bilking'.

The tollgate keepers were tough, rough hardnosed men (and women too - I had a paternal female ancestor who was a tollgate keeper) - that were resented and were prepared to take verbal and physical abuse and to give out the same.



**Left** – an illustration of extreme 'bilking'

Never the less the turnpike/toll gate system soldiered on until the 1870's and largely replaced by Highway Boards, which in turn surrendered their powers to the County Council in 1888.

**So how did the condition of Sharnford roads fair in days of yore?** According to John Nichols, the antiquarian, who wrote of Sharnford in 1811....*'the roads of the parish have, of late years rapidly improved, under the direction of that able Mathematician and Astronomer Mr Joshua Clarke, who is one of the principle landowners here...'*

**So how much would the charge be to pass through a tollgate?** Charges differed in different

parts of the country - but by the 1820's a single horse and cart travelling, say, from Sharnford to Hinckley market with cheeses and chickens to sell - would have to pass

through this tollgate **(left)** situated where the Burbage , Hinckley, and Sapcote roads converge (Burbage corner) - cost 4d. (£1.12p). He would also have to pay on his return. Bear in mind that if the journey was longer he might have to pass through several tollgates during the course of his journey and the cost outlay would considerably increase.



**Right** - photographic evidence today at Claybrooke of the Old Chester Coach road. The sign reads.....**Green Lane - Old Chester road. This was part of of the London to Chester Royal Mail route taken in the 18th. century. Restored by Claybrooke Parva Parish Council in 2001.**



Although the first toll road was established on the Great North Road in 1663, it was not well received by the populace as can be imagined. It wasn't until hundred years later that a tolled road reached Sharnford parish. It was part of the London-Chester coach route which was eventually to be fully tolled by 1766. It's route past by the front door of Tollgate Cottage, Highcross. (pictured earlier)

In 1791 the vicar of Claybrooke, the Rev. Macaulay, wrote of the road....**'the turnpike road which passes through Claybrooke was begun about 30 years ago. Before that time the access to Claybrooke was very difficult from all quarters in the winter season'....'the mail coach passes through every morning a few minutes after nine on its way to Chester, where it arrives that evening'....**

**Stories & Rhymes**  
 For the under 5's  
**Every Tuesday**  
**(Term Time Only)**  
**10.30am—11am**  
 Sapcote Community Library,  
 Church Street  
 Come with your children and share  
 Stories, Songs & Rhymes  
 FREE – DONATIONS APPRECIATED

Sources

- The Turnpike Roads of Leicestershire and Rutland....Arthur Cossons
- Pugh's History of Leicestershire
- The Awakening Giant - Britain in the Industrial Revolution....E.R. Chamberlin
- Nichols History & Antiquities of the County of Leicester Vol. 4 Part 1 pub. 1811
- Quicksilver - a hundred years of coaching 1750-1850....RC & JM. Anderson
- Cassini Ordnance Survey Map 140 1901-1902
- Internet ....UK Money Inflation Calculator

# THE BRICKLAYERS

If there are any positives to come out of this global pandemic as a business owner, it would be that the first lockdown gave us time to take a step back and breathe. Although not ideal from a financial perspective, here at The Bricklayers we embraced the Summer shut down and grabbed the opportunity to



improve the bar and restaurant for our customers for when we were able to reopen. That enabled us to stay positive throughout that uncertain time.

The entrance bar area and restaurant are now much improved providing a cosy and welcoming space in keeping with The Bricklayers theme. New décor, flooring, window dressings and of course brand new ladies and gents toilets are but a few of the jobs that were undertaken, along with a few, less interesting, structural works.

The bar itself has been lovingly restored to its original glory and the remainder of the pub has been brightened up with a coat of paint.

Our existing oak framed gazebo accessed through the bi fold doors, has been furnished with extensive



bench seating, tables and heating giving a very social area and one which we hope can be enjoyed whatever the weather. The large enclosed marquee will also be heated when we reopen allowing extra seating with the Governments rules of reduced indoor capacity.



The photos show the finished project and one we are very proud of.



Although all Government Guidelines were in place for the opening in July...sanitizers, track and trace, one way system, masks and table service...we were very happy that this didn't seem to take away the usual relaxed atmosphere that our customers have come to love, and we thank them all for understanding and abiding by the "new normal". The Bricklayers Team have, of course, been amazing in keeping up their welcoming manner, albeit through masks, which in itself is a hard task.

Fingers crossed that the second lockdown won't be as prolonged especially



now the summer sun has been and gone and the dark nights are with us. A perfect time to be sat by our log burner and enjoying our new winter menu or making use of the heated outside areas tucking in to one of our Garden "Box" Menu or just enjoying a freshly ground warming coffee.

The Bricklayers Team are looking forward to seeing you very soon, albeit at a socially acceptable distance and rest assured, every effort will be made to continue to

keep you safe during your visit.

Find us on FaceBook for any updates or check out our menus and opening hours on [thebricklayers.org](http://thebricklayers.org)

**Sharnford Garage Ltd**

**M.O.T WHILE-U-WAIT**

We test cars, light vans,  
motorbikes and 3 wheelers

**Full Service & Repairs on all**

**Makes Petrol and Diesel**

**Courtesy cars Available**

**Leicester Road, Sharnford**

**01455 272336**

## **SHARNFORD NEWS**

### **We want your stories...**

If you want to share any stories or you would like any history articles researching please contact us by email at [Sharnfordnews@gmail.com](mailto:Sharnfordnews@gmail.com).

Your stories, successes and achievements could be in the next edition of the Sharnford news for all to read.

## **WALK-IN COVID-19 TEST CENTRE**

A temporary Covid-19 walk-in test centre will be set up on the Visitors Car Park at **Blaby District Council's Offices on Desford Road in Narborough.**

The site will be managed by Department of Health and Social Care and their contractors, and will remain in place for six months, although this may be extended depending on local testing need.

The walk-in test centre will operate from **8am-8pm seven days a week** and offer vital testing capacity locally. As tests are offered by appointment only, the number of people on the site at any one time is always limited.

Work will begin on site in the next few days and the test centre is expected to be up and running on Friday 20 November.

Council Leader Councillor Terry Richardson said: "This new walk-in centre will make it even easier for anyone who thinks they have coronavirus symptoms to get a test done locally, avoiding the need to travel large distances. "We' are pleased an appointment-only, walk-in test centre on the site of Blaby District Council offices is being set up. Testing is a vital part of helping to get this virus under control and making sure we're protecting the people we know and love."

Anyone with symptoms of coronavirus should visit [nhs.uk/coronavirus](https://nhs.uk/coronavirus) or call 119 to book a test.

## **SHARNFORD SICK AND DIVIDEND FUND**

Sadly, due to the situation with Covid-19 and the current lockdown, we are unable to hold our annual prize draw, which most villagers and friends look forward to. This is mainly due to the lack of social gathering where we can sell tickets as many of these are closed at this crucial time of the year. However, due to some generous funding from various sources, we will still be going ahead with the distribution of festive food bags to the pensioners of Sharnford as normal, or as normal as can be given the current situation. It is planned to distribute these on Saturday the 19th of December.

Obviously we will be taking the necessary precautions when packing and delivering, with the welfare of the community and our volunteer helpers being paramount. At this moment in time we cannot visualise the 19<sup>th</sup> December so we will be adopting the drop off methods of delivery people, it will probably be a knock or ring on your door and the food bag will be left on your door step. If you received a food bag last year but you prefer not to have one this year because of Covid-19 please let me know by the 10th of December so that we do not over order on items for the food bags. My phone number is 01455 274678.

We are hoping to hold a smaller prize draw maybe around Easter time but cannot make any plans at the moment for obvious reasons.

**Jack Feast**

**Sharnford  
Pre-school**

Free places for eligible 2, 3 and 4 year olds  
Wrap around and holiday care available

**Call:**  
**07495 432569**

[www.sharnfordpreschool.co.uk](http://www.sharnfordpreschool.co.uk)

Manager - Mrs Nikki Gower Ofsted Registered by Petite Academy Ltd

Available Mondays, Wednesdays and Fridays between 9:00 to 14:00  
Holiday care available provided by local Nurseries and child-minders

## SHARNFORD EVERGREEN CLUB

The club did not meet at all for the usual fortnightly teas since March following the Covid-19 restrictions. However on the 28<sup>th</sup> October we held our Annual General Meeting in a reduced manner following strict guide lines when 12 members attended, followed by a served tea. It was good to be able to see fellow members, albeit from a distance, there will be no normal tea meetings until permission has been granted.

We lost one of our longest committee serving members, and latterly a club member, Mrs Pat Jordan. Pat had been involved in the running of the Evergreen Club for many years and we will miss her.

We look forward to a time when we can get together again and meantime stay safe.

***Carol Hunter, Chair***

## SHARNFORD VILLAGE SHOW

With nothing to report and no idea what we will be able to do for 2021 let's move onto something more positive for Christmas. We would have had a children's painting competition for the show back in September. So let's have some fun for Christmas.

Choose the first one for the young children and the second one for older children aged from 8 to 80+. Hopefully the logistics of displaying your entries can be resolved for December. These are also available on our Facebook page. Please return your drawing with your details on the back to Tony Curtis, The Old Police House, Halls Crescent by the 15th December.

Name: \_\_\_\_\_



For older children aged from 8 to 80+

Name: \_\_\_\_\_







## SHARNFORD TRAFFIC ACTION GROUP (STAG)

It has been over 12 months since any data was produced but it is now time to revive the issues dealt with by STAG.

Because of Covid-19 the STAG group have been unable to meet. It has now

been agreed by the group and the Parish Council that traffic issues will become the remit of the Council. STAG's bank account will be closed, and the funds kept in a separate cost centre within the Parish Council account.

The first half of 2020 has seen a general slowdown of traffic on the B4114 and a decrease in vehicle volumes. However, since the relaxing of lockdown, speed and volume has gradually increased. It would be nice to prove this with data from the average speed cameras but despite Leicestershire County Council Highways Department promising to furnish figures in October, this information has not yet arrived.

Aston Lane has seen an increase in speed and traffic volume over the second half of the year which has culminated in a number of cars ending up in the ditch, on their side or roof. In October, these accidents were added to by a bus. This resulted in the police having to close the road to enable recovery to take place. Luckily, no one appears to have been seriously injured. The cars were not so lucky. The speed monitor will have been reinstated on Aston Lane by the time you read this. It is worth stating that although the monitor only faces in one direction it does record speeds and traffic flow in both directions.

Finally, how did the car at the B4114/Frolesworth Lane manage to get into such a position? This is in addition to the two cars that left the road, one by Sharnford Garden Centre and the other by the Shades Business Centre. Is the new 50mph speed limit being monitored on the B4114? I suspect not.

Have a brilliant Christmas and **Stay and Drive Safe**

**Mike Shirley**



### *Tai Chi*

*Slow down and relax - Improve health and well-being*

*The ancient Chinese practice of gentle coordinated movements concentrating on releasing tension and increasing relaxation.*

*Classes are planned to start in September with Covid-19 safe processes in place at*

*Village Hall, Broughton Astley and George Ward Centre, Barwell*

*Non-aggressive - Non-competitive - Suitable for all ages - Beginners welcome*

*Please contact Malcolm for more information on 01455 324008*

## A POEM FOR “KEN”

An Evacuee from Liverpool  
His age was almost ten  
Went to a North Wales village school  
Let's call the young lad “Ken”

High on a Snowdon mountain  
Stood the Evacuee  
He'd climbed high up the hillside  
The better view to see

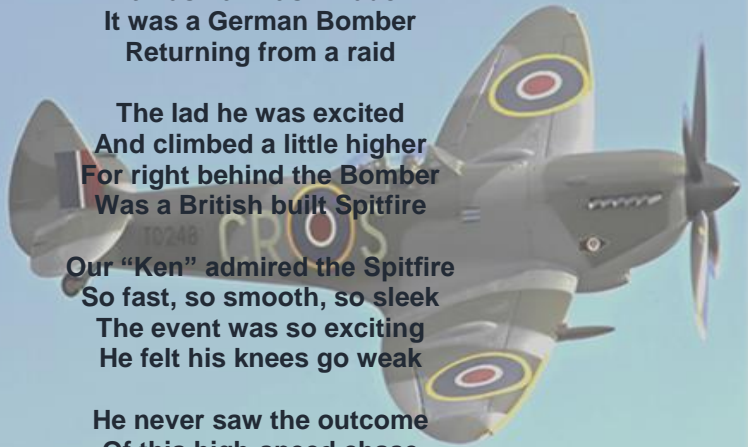
He heard an aero engine  
It wasn't British made  
It was a German Bomber  
Returning from a raid

The lad he was excited  
And climbed a little higher  
For right behind the Bomber  
Was a British built Spitfire  
Our “Ken” admired the Spitfire  
So fast, so smooth, so sleek  
The event was so exciting  
He felt his knees go weak

He never saw the outcome  
Of this high-speed chase  
But the event stuck in his memory  
And time it can't erase

The Evacuee now Ninety  
Continues to tell the tale  
We all had the Battle of Britain  
“Ken” had his Battle of Wales.

*Written by George Wray, assisted by Tammy Fanthorpe to celebrate the 90<sup>th</sup>  
birthday of Ken McGunigle*



## BLABY DISTRICT COUNCIL - KICKSTART SCHEME

The first 39 applications to help young people into work have been submitted to the Government's Kickstart Scheme.

Blaby District Council has volunteered to be a gateway for small businesses to take advantage of the scheme, which helps those aged 16-24 years old and on Universal Credit into six-month job placements.

The Kickstart Scheme requires businesses to offer a minimum of 30 placements, but through Blaby District Council small businesses in the area who are the backbone of the district's economy can take advantage of the initiative. After the first businesses came forward 39 applications have been sent to the scheme to get local people into work, with some of the roles based at Blaby District Council.

Councillor Ben Taylor, Portfolio Holder for Planning, Housing Strategy and Economic Development, said: "The news of these initial applications is absolutely fantastic. We are incredibly proud to be a gateway for our local, small businesses to access this scheme.

"Being a part of this scheme will ensure young people at risk of long-term unemployment can access fully paid jobs, giving them the experience they need for their careers. Businesses taking part can also take advantage of a scheme which could be a financial lifeline during the current pandemic."

Employers taking part in the Kickstart Scheme will receive funding for 100% of the relevant National Minimum Wage for 25 hours a week, plus associated employer National Insurance contributions and employer minimum auto-enrolment pension contributions.

Businesses interested in joining the Kickstart Scheme can register with Blaby District Council's Gateway at [www.blaby.gov.uk/kickstarter](http://www.blaby.gov.uk/kickstarter). Young people looking to take part in Kickstarter can visit <https://jobhelp.campaign.gov.uk/kickstart/>



# YOGA

Thurs 9.45am - 11am

Fri 9.45am - 11am

**Sharnford Community / Youth centre**

Mixed level class...75 mins £10 Pre book only

Fully Qualified & Insured instructor with  
over 30 years teaching experience

Website: [www.yogawithadele.co.uk](http://www.yogawithadele.co.uk)

Facebook: [www.facebook.com/yogawithadele1](https://www.facebook.com/yogawithadele1)

Book: <https://app.gymcatch.com/provider/2004>

Call/Text: 07837927227





# SAPCOTE COMMUNITY LIBRARY

Church Street  
Sapcote  
Leicestershire LE9 4FG  
Tel: 0116 3053674

[www.sapcotecommunitylibrary.org.uk](http://www.sapcotecommunitylibrary.org.uk)

We are pleased to confirm that Sapcote Community Library is now open. Initially in order to protect our customers and volunteers we will be opening for two shifts per week on **Monday morning 10am – 1pm and Friday afternoon 2pm – 5pm**

This will provide us with sufficient time between shifts to ensure we can clean the library thoroughly and allow returned books to be left for a period of three days between handling. We will need to take certain precautions to keep everybody safe and therefore we have had to make a few temporary changes and the following restrictions will be in place:

- At this time we would only allow adult customers - this is not what we want but the library is small and distancing with children would be challenging.
- We will provide gloves, masks and sanitisers which will be available for your use. The wearing of masks is now mandatory and the wearing of gloves would be particularly appreciated given that most customers like to pick up a number of books and read the synopsis before making their choices.
- If we have a significant number of customers arrive at the same time we may ask you to be mindful that other customers are waiting to enter the library and give you a restriction on time (hopefully this won't be required)

**Sharnford Over 60s Youth Club**  
Everybody welcome – Join in and  
enjoyable morning  
Table Tennis, Bridge and Darts  
Discs and Darts  
Discs!  
Every Wednesday: 10.00-12.00  
Youth & Community Centre

**Will re-open soon**

➤ Unfortunately the following will **NOT** be available during this period:

- public computers
- public toilet
- Refreshments

I hope you will understand that it has been necessary to make these adjustments to allow us to reopen safely for all our customers and volunteers. Over

the coming weeks and months, we hope that we will be able to open fully and continue to offer and provide the many other activities that you have come to enjoy.

We are delighted to finally be able to reopen and look forward to welcoming you all back into our Community Library.

### ***Sapcote Community Library Volunteers***

## **SHARNFORD EVERGREEN VILLAGE HALL**



The hall has been generally closed since March. Pre-school restarted in September and seems to be going well.

We regularly receive information from the Rural Community Council and ACRE, the agency for rural affairs and are doing everything recommended during the Covid-19 crisis. Hopefully we shall all be able to resume normal routines in the new year.

We have had several enquiries about parking outside the hall at the weekends and whether any gatherings are taking place. We are not using the hall for any event but have agreed that the Bricklayers may park staff cars there to help them keep operating during this Covid -19 time.

***Rosemarie Simpson, Treasurer***

## **W J EDGE & SON BUILDERS LTD**

**BUILDING CONTRACTORS**

Phone: 01455 271321    Mobile: 07831 181079

**Residential & Commercial, New Developments,  
Extensions, Alterations, Hard Landscaping**

*Estimates Free*

# SHARNFORD PARISH COUNCIL CHAIRMAN'S REPORT

We now have a new Parish Clerk – Karen Leck.

Karen and husband Andy have recently moved into the village from Burbage, but we won't hold that against them. Seriously, Karen took on the role of Parish Clerk at the beginning of October and has quickly settled in, proving to be an asset to the village. Karen's contact details can be found on the back page of Sharnford News.

I understand that Sharnford Cricket Club have been using the proceeds from the sale of the cricket ground to benefit various volunteer groups in the village. Well done and a special thanks to Roger Simons for supporting our village.

We are now back in lockdown and this appears to be having a greater detrimental effect on some resident's health and livelihoods than the previous lockdown. Do not forget there is Sharnford Community Support Group which was specifically set up to deal with the impact of Covid-19. We can help with shopping, collecting prescriptions, food, and general help. The group is here to support the good work which continues from the Good Neighbour Scheme. Beth Edge, who ably administered the group, has now moved on to pastures new so the contact for the Community Support Group will be me, Mike Shirley. Do not hesitate to phone 07539 994707 if you need help.

Because of Covid-19 and the need to protect our volunteers Sharnford Traffic Action Group (STAG) has now become the remit of the Parish Council. By the time you read this we will have begun recording data on Aston Lane via the Speed Monitor.

Parish Council meetings will continue on-line via Zoom and I encourage residents to attend. Follow the link to be found on the Agenda. The Agenda can be found on our website <http://www.sharnfordparishcouncil.co.uk> go to Agenda and Minutes, meetings calendar. You can also find news and useful information on the website.

## Sharnford Parish Council contacts:

Cllr Mike Shirley (Chairman)	Tel.07539994707 mike.shirley@sharnfordparishcouncil.co.uk
Cllr Jack Feast (V Chairman)	jack.feast@sharnfordparishcouncil.co.uk
Cllr Sue Stanley	sue.stanley@sharnfordparishcouncil.co.uk
Cllr Gary Peryer	gary.peryer@sharnfordparishcouncil.co.uk
Cllr Martyn Dalton-Brown	martyn.dalton-brown@sharnfordparishcouncil.co.uk
Cllr Lee Martin	lee.martin@sharnfordparishcouncil.co.uk
Karen Leck (Parish Clerk)	clerk@sharnfordparishcouncil.co.uk

***Mike Shirley, Chairman – Sharnford Parish Council***



# WALKIES

## WORRIED ABOUT YOUR PET'S CARE AFTER LOCKDOWN?

MBF are able to provide a number of services for you and your pets: We can provide help with the following plus more:



- Individual and group walks
  - Pet sitting
  - House visits
  - Vet visits



See below for more details

Call 07821 752 585



[www.mbfwalking.co.uk](http://www.mbfwalking.co.uk)



Email: [alex@mbfwalking.co.uk](mailto:alex@mbfwalking.co.uk)

Open and running as usual during the pandemic





## SHARNFORD PRIMARY SCHOOL

The children at Sharnford Primary have come back to school brilliantly! They have all settled in extremely well and follow our new routines and procedures very sensibly. Obviously our usual trips and visits are not allowed to go ahead this term but that hasn't stopped us! Our children and parents/carers raised £143 for the local foodbank, as well as £93 for Hello Yellow – a charity that focuses on young peoples' mental health.



Every week we hold a virtual assembly so we don't lose the family feel that makes our school so special and we've had lots of children nominated for being Sharnford Superstars by their class teachers. This last week the Y5/6 class recorded a complete virtual assembly for not only our school to watch, but for All Saints, Sapcote and Ullesthorpe Primary too – all based around the important value of friendship.

Just before half term we entered a competition to win a Travel Safe banner especially made for our school gates which would have one of our children's designs on it! We entered one child from each year group and one of our children was selected to have a banner made! Well done to Olivia, Zach S, Grayson, Scarlett and



Ellie for being super runners up and a massive well done to Eilidh for winning! A fantastic design which we'll soon see on our school gates!

In November we supported Children In Need where the children dressed up as superheroes and we spent some time focusing on keeping our minds and bodies healthy.

On the run up to Christmas, we'll still be doing lots of lovely Christmas activities and continuing our emphasis on keeping the children as safe as possible in these tricky times. We have a Facebook page which shows our daily life in school and our new website for further information: <https://www.sharnfordprimaryschool.com>

## SHARNFORD SCHOOL PTA

Halloween at the PTA, we held a spooky hunt for the letters around the village to spell the word '**Broomstick**'.

We had a fancy dress competition winners were 1<sup>st</sup> Hattie N (in the pink) and 2<sup>nd</sup> Kasey G. In the colouring competition there were winners of Ollie S and Evie R.

Thank you for everyone who took part. We had some fantastic entries and prizes were awarded.

**Kelly**



## SHARNFORD LADIES GROUP

Sadly, we have no news of past or future meetings at this point in time. When we are able to restart all members will be notified.

We usually meet on the first Wednesday of each month at 7.30pm in the Evergreen Hall for talks, demonstrations or activities followed by coffee, biscuits and chat. Please feel free to join our sociable group in the future; guests pay £4 for the meeting to include coffee and a raffle.

**Lynda**



## SHARNFORD ARMS



Steve and the team at the Sharnford Arms wish all our customers a happy and healthy Christmas + New Year

**Chinese takeaway available Tuesday – Sundays 5:00 to 10:00**

**Sunday lunches and Christmas menu from the 7<sup>th</sup> December**

During this festive period there will be parking available for sleights. Stabling is available for the four horseman of the apocalypse by appointment only.

## COW STUCK IN DEEP MUD HOLE IN SHARNFORD

Some of you may have wondered what was happening on Thursday October 22nd, in Coopers Field, next to Coopers Close, Leicester Road. Three fire engines, two police cars and another car, were parked on the main road, while the incident was underway. The police had to provide a temporary single line traffic system past the vehicles.

A cow was partly submerged in a mud hole in the field and spotted by a person living in Coopers Close. They, and neighbour Barbara Proctor, contacted the emergency services, who quickly attended the scene. A vet also attended and it soon became clear that the cow was in some distress and couldn't get out. The fire service, using a sling and a mobile lifting device, were able to lift the cow out, but it was unable to stand and still very unwell. The vet gave the cow more treatment and decided that it was best to let the cow recover overnight, laying down on a bed of straw, on higher ground near Barbara's bungalow. In the meantime the hole was filled in.

Unfortunately, when the vet visited next morning, the cow was not well at all, and had to be put down. Barbara believes the cow had recently given birth to a calf, which was in the field. Luckily the calf was now old enough to manage on its own.

***SHARNFORD News chief reporter***

## ST HELEN'S CHURCH



During the last 3 months, we held a short service each week at 10 am and we held our Annual General Meeting on the 28<sup>th</sup> October

The church is again closed but we hope to be able to open again once this additional lockdown has ended.

Unfortunately due to the restrictions, our Christingle Service cannot take place. We are very disappointed that we cannot hold this

service as it is such a joy for everyone. Here in Sharnford we collect money at the service for the Children's Society. The Society does tremendous work with disadvantaged children who suffer both physically and mentally. As we cannot collect during the Christingle Service, maybe if you wish to donate to this worthwhile cause, you can do so on their website **[www.childrenssociety.org.uk](http://www.childrenssociety.org.uk)**

We look forward to the season of Advent and hopefully we will be able to open for limited services at Christmas but will keep everyone informed.

We held a reduced Remembrance Ceremony this year on the actual Remembrance Day. Wreaths were laid at 11 am on the 11<sup>th</sup> November when we observed the 2 minute silence

A joyous note in this Covid-19 year is the birth of Kathryn to Charlie and Matt Dickerson, members of our congregation. Congratulations to you and we look forward to seeing Kathryn in the hopefully happier future.

*Rosemarie Simpson*

## SHARNFORD GOLDEN JUBILEE COMMITTEE VILLAGE FETE

The fete committee are hoping to hold their Annual General Meeting on Tuesday 19th January 2021. It would be nice if this can be an actual meeting at the Evergreen Hall, but if this is not possible then we may be able to arrange a virtual meeting.

At the meeting the fete committee will be elected and hopefully we will be able to discuss the possibility of holding a 2021 fete. As in previous years, any village group wishing to receive a share of the fete profits will need to have a representative at the meeting. The meeting is open to anyone who would like to get involved. We will let you know more details in due course.

*Sue Stanley Fete Secretary 01455 273861*

## SHARNFORD ENVIRONMENT GROUP

With the year 2020 throwing all sorts of challenges, and our usual working groups falling into a very grey category of social distancing, Sharnford Environment Group have had to take a step back with beautifying and supporting our local environment.



Where possible, our volunteers have been out working on Bluebell Green and Poor's Meadow - Bluebell Green especially looking absolutely stunning as a gem in the middle of the village. Our green spaces certainly enjoyed the hot weather we experienced this year!

Sadly we were unable to hang the usually eye-catching hanging baskets this year and the difference has definitely been noted in the village. Hopefully 2021 will bring new changes to how we live our lives and this will mean we are able to start meeting again, start working in bigger and more organised groups around the village and most importantly start some exciting new projects (due to start at the beginning of 2020!). We are very much still here and warmly welcoming anyone who would like to get involved and anyone new to Sharnford - please do get in touch!



From all of us, and those who volunteer for us, we would like to take the opportunity to wish you a very Merry Christmas and a Happy New Year!

**Naomi Allen**



### THE SHARNFORD GOOD NEIGHBOUR SCHEME

Please note whilst the Sharnford Good Neighbour Scheme is unable to offer lifts to people at the moment, we have continued to provide support that is safe and appropriate e.g. collecting prescriptions, telephone befriending to anyone who just wants to hear a friendly voice, and more recently small gardening jobs.

To request support please call our dedicated phone number: 07502 615535 to speak to the Good Neighbour Scheme Co-ordinator, however, please be mindful that the support we are currently able to offer is fairly limited, to ensure the health and safety of both our users and volunteers

## WILDLIFE WATCH



Are you lucky enough to have hedgehogs resident in your garden? As their numbers decline, and in some areas they `at risk` of dying out, we feel fortunate to have had five in our garden this year. Yes, we encourage them with regular feeding, a bit of `wild space` and providing a home or three!! This is how it all happened.....

Two or three years ago we found a hoglet (baby) in the garden in late autumn. We phoned Kibworth wildlife centre for advice and were informed to bring him/her in. This baby was underweight, and would not survive hibernation. Apparently they need to weigh about 600 grams before they can hibernate successfully. So the wildlife centre kept the baby over the winter, when it would be fed regularly and not hibernate. The following Spring, the centre phoned to say the hog was ready to come back and please could we take another one, since they had 200!! hoglets in over that winter period. Of course, we said yes and that's how we came to be having regular sightings of the hogs in the garden

They must have mated (it's a noisy process usually involving lots of hog grunting...like a small pig, hence the name) and so produced they young. Their mum only stays with them a few shorts weeks, and then they are on their own Over the summer we continued to leave out food as did our neighbour and so the hogs stayed. We fed them usual `over the counter` hog food or sometimes meaty dog /cat food.

They don't eat fishy products and should never be given milk. There is always fresh water available too in a bird bath. Early summer evenings we have seen them in the bird bath having a quick dip rather than just a drink

This continued all summer in to the present Autumn. Then we spotted – on separate occasions the three youngest. All were weighed (using the kitchen scales) and found to be underweight. So as the weather had been mild we took advice and gave the little creatures more time and more food ...it worked!!!. They are now all an acceptable weight, so should go into the winter successfully

We read the advice given from the hedgehog preservation society that hogs don't always hibernate fully, but can wake up on mild days for a feed a snuffle and general tidy up. So we shall continue to put food out until it's not eaten and then remember they may pop out one evening during a milder spell

So if you are lucky enough to have hedgehogs in the garden, please give them a little extra care and food to help preserve this unique species

***Sharnford resident***

## SHARNFORD COMMUNITY CENTRE

<b>MONDAY</b>	<b>ARTS AND CRAFT CLUB</b> (TBC due to Covid-19)	Come along and bring your own craft project to work on.	Gabrielle Bryan 01455 631026
<b>TUESDAY</b>	<b>PILATES FOR RIDERS</b> (please check due to Covid-19) 7pm – 8pm & 8pm – 9pm	Solely for horse riders	Joanna Smith <a href="mailto:Joanna.smith@me.com">Joanna.smith@me.com</a>
<b>WEDNESDAY</b>	<b>OVER 60'S YOUTH CLUB</b> 10am – 12.30pm	Join us for table tennis, indoor bowls, darts or just come along to meet up with friends and have a coffee and a chat	Derek Gibbons 01455 272401
	<b>PILATES FOR RIDERS</b> (please check due to Covid-19) 7pm -8pm 8pm – 9pm	Solely for horse riders	Joanna Smith <a href="mailto:Joanna.smith@me.com">Joanna.smith@me.com</a>
<b>THURSDAY</b>	<b>YOGA</b> 10am – 11am	Open to all. Come along to develop mind, body and spirit	Adele 07837 927227 <a href="mailto:yogawithadele@live.co.uk">yogawithadele@live.co.uk</a>
	<b>PILATES FOR ALL</b> (please check due to Covid-19) 1.45pm – 2.45pm	Working on core strength and flexibility. Open to all ages and abilities.	Joanna Smith <a href="mailto:Joanna.smith@me.com">Joanna.smith@me.com</a>
<b>FRIDAY</b>	<b>Currently available</b>		

*The hall can also be hired for weekend functions, please contact me on 271321 Julie Edge - Chair Sharnford Youth & Community Centre*

## Counselling/Psychotherapy

### Looking towards a clearer, brighter future

There may be a time when you need to talk to someone who will listen to what you really need to say, helping you get an understanding of the present, in the hope for a better future.

We are local Person Centred Counsellors, fully qualified, registered and experienced in a wide range of issues supporting and helping adults, young people and children.

**Zoom or WhatsApp sessions are available**

**Face to face sessions are available with Covid-19 save processes in place**

For a free initial session and discussion, without obligation, please contact:

Kelly Williams  
Amukelani Counselling  
07806 323 635  
Kelerina@aoodlemail.com

Malcolm Soulsby  
Six Acres Counselling  
07715 178 874  
[www.sixacrescounselling.co.uk](http://www.sixacrescounselling.co.uk)

## VILLAGE BUS TIMES

Sharnford to Hinckley or Leicester (X55) - Monday to Saturday (not Sunday)  
Hinckley via Aston Flamville & Burbage at 0758,0805,0900,1140,1430,1730 & 1930  
Leicester via Sapcote, Stoney Stanton, Thurlaston, Enderby & Fosse Park at 0553  
Mon to Fri,0613Sat only, Mon to Sat 0656,0944,1229,1523,1814

## MOBILE LIBRARY – ROUTE 13

	Location	Start	End
Sharnford	Halls Crescent	09.30	10.10
Sharnford	Evergreen Hall	10.15	10.45
Wigston Parva	Village Centre	14.35	14.50

Visits on the 4<sup>th</sup> Monday of each month - 0116 305 3619 (please check due to Covid-19)

## SHARNFORD VILLAGE INFORMATION SHEET

Organisation	Contact	Details
<b>Blaby District Cllrs.</b>	Iain Hewson 273957, Deanne Freer 07530 319637	
<b>Community Centre</b>	Julie Edge 271321	
<b>Craft Group</b>	Gabrielle Bryan 631026	Community Centre Mon(fortnightly) 19.30 - 21.30
<b>Doctors-Broughton Astley</b>	(01455) 282599	Evergreen Hall Thurs 12 - 13:30
<b>Doctors-Burbage</b>	(01455) 634879	Evergreen Hall Tue 11-12
<b>Doctors-Stoney Stanton</b>	(01455) 271442	
<b>Environment Group</b>	Naomi Allen, naomiallen38@gmail.com, 07930232648	Second Tuesday of the month at 7.30pm in the Evergreen Hall
<b>Evergreen Club</b>	Jean Dale 274772	Wednesdays twice monthly
<b>Evergreen Hall</b>	Margaret Sanders 274038	
<b>Flood Warden</b>	Jack Feast 274678	
<b>Golden Jubilee Fete</b>	Sue Stanley 273861	
<b>Good Neighbour Scheme</b>	Direct Help Line 07502 615535	
<b>Leics. County Councillor</b>	Mrs M Wright 07815 450031 Mrs.M.A.Wright@leics.gov.uk	
<b>Methodist Chapel</b>	Local Pastor Anne Haddon 617692,	
<b>Over 60's Youth Club</b>	Derek Gibbons 272401	Community Centre Weds 10 - 12.30
<b>Parish Council Chair</b>	Mike Shirley 07539 994707 mike.shirley@sharnfordparishcouncil.co. uk	Meetings held 3 <sup>rd</sup> Thursday at 19.30 Evergreen Hall
<b>Parish Council Clerk</b>	Karen Leck clerk@sharnfordparishcouncil.co.uk	
<b>Parish village website</b>	www.sharnfordparishcouncil.co.uk	
<b>Post Office</b>	Eric and Gay Washbrook 272210	
<b>St. Helen's Church</b>	Rev Mick Norman 272215, Cynthia Oliver 272977	
<b>Sharnford Ladies Group</b>	Wendy Kendall 273889	1st Wednesday of month
<b>Sharnford Pre-School</b>	Paula and Joy 07925331497	Evergreen Hall
<b>Sharnford Primary School</b>	Mrs S Boyd-Hope, Acting Head teacher & Secretary 272456	
<b>Sharnford Traffic Action Group (STAG)</b>	Mike Shirley 07539 994707	
<b>Sharnford Village Show</b>	Tony Curtis 272532	