

SHARNFORD NEWS

1st March 2020

Issue No 73

A Project supported by Blaby District Council.

MP's RAISE RAIL FREIGHT CONCERNS IN PARLIAMENT

Alberto Costa, MP for South Leicestershire, led a debate in Parliament on February 11th to raise the widespread concerns of local residents regarding the proposals for the Hinckley National Rail Freight Interchange. Mr Costa was supported in the debate by Bosworth MP, Dr Luke Evans, both of whom spoke of their respective constituents' serious concerns over the 440-acre development proposed for the south of the village of Elmesthorpe.

If approved by the Secretary of State for Transport, the development will be built with access to the Leicester-Birmingham railway, and could see 8,000 employees entering the site with trains a mile in length using the rail interchange. Local concerns have been raised across the area by residents alarmed at the plans environmental impact and worries over local infrastructure. Mr Costa said, "I was very pleased to raise the serious concerns of my constituents with the Government in Parliament today, alongside my constituency neighbour, Dr Luke Evans MP. The results of a survey issued to over 11,000 people in the vicinity of the proposal were quite clear in opposing the plans, so I was delighted to ensure that local voices were heard in the hope that the Government will act on these and give the development the appropriate scrutiny it deserves".

MP for Bosworth, Dr Luke Evans, said, "The prospect of a national rail freight interchange does bring with it tangible opportunities for the economies of the South Leicestershire and Bosworth; but it does bring very significant risks too. It's vitally important that the Minister considers the impact on the infrastructure of our area that such a development would bring; whether that is schools, surgeries or the congestion on our roads. We must think about the future of our countryside and the quality of life available to our residents, both of which must be protected. Alberto and I will continue to raise this issue at the highest level and will work together on confronting the project."

Blaby District & Leicestershire County Councillor, Maggie Wright, added, "On behalf of the Councillors of the Fosse Villages, we are very grateful to Alberto for

taking this matter forward in the House of Commons. Local residents are deeply worried about the Rail Hub's potential impact on the environment and the already over-burdened local infrastructure in the Fosse Villages, so we do hope the Government takes this on board".

Mr Costa concluded, "This is a quite monumental development proposed for this rural area of my constituency, to put it into some perspective, the development would encompass an area a quarter of the size of Gatwick International Airport. This would have a hugely detrimental impact on the identity of villages such as Elmesthorpe and Sapcote, and I fully appreciate and understand my constituent's very serious concerns about these proposals. I was pleased to act on these concerns today and will of course continue ensuring my constituents are properly represented to the fullest extent".



SHARNFORD FILMCLUB

Films at the Evergreen are back and will resume on 1st April.

A big thank you to Richard Bacon for starting this up last year with some great films. A thank you also to Scott and Ian for the techie stuff getting the projection equipment up and running. Not to mention the Evergreen Hall for buying the licence which allows us to show films.

We will start with a showing of Yesterday. A feel good comedy film stuffed full of Beatles songs. It is 50 years since the Beatles broke up in April 1970 and 50 years since their final album Let it Be. So what better way to start than with this romantic comedy?

The aim is to continue with a monthly showing on a Wednesday night. You the audience will be asked what you want to see in future. Be it a recent film or a classic from the past. If you have only ever seen your favourite film on TV then vote to see it on the big screen.

We also plan to show films for a younger audience once we have dipped our toes in the water with a few evening performances.

Tony Curtis

**Sharnford Post Office
and Village Store**

Convenience Store, Newsagents and
Post Office

Gay and Eric welcome your custom
All the usual Post Office facilities
including Cash Deposits and Withdrawals
on all major Bankcards

Open 7 days Tel. 01455 272210

SHARNFORD SICK AND DIVIDEND FUND

I would like to thank the many people involved in making our annual raffle a success. This wouldn't have been possible without the donations of prizes from individuals, local businesses and various supermarkets. Equally a big thank you goes out to all the buyers of raffle tickets, being cajoled and hassled into buying tickets every 12 months to support this event that has been going on for many years.

Following last year's success, the prize draw was split between the two public houses in the village, where many of the ticket sales are made. Quite a few sales were also made further afield, with winners as far away as South Wales.

We received many letters and cards of thanks this year, far more than normal, from villagers appreciating all the hard work and effort that goes into putting the Christmas gift bags together, along with their distribution.

Once again many thanks to all involved with this annual event - your gesture is much appreciated.

Jack Feast

SHARNFORD SHINES FOR CHRISTMAS

Just like previous years Sharnford was once again shining during the Christmas period. It is a credit to all who put time and effort into lighting up their properties to embrace the festive period



A warm and friendly welcome awaits you at The Bricklayers

Freshly prepared and locally
sourced food

OAP Specials
served 12.00-2.00pm
Tuesday to Saturday

Midweek Roast
served Wednesday lunch
12.00 - 2.00pm - 2 courses

FOOD SERVED

12.00-2.00pm & 6.00-9.00pm Tuesday, Wednesday & Thursday
12.00-9.00pm Friday and Saturday

Tuesday - **Traditional Pub Grub**

Wednesday - **Build-A-Burger and Grill Night**

Thursday - **Tapas and Homemade Pizza Night**

Friday & Saturday - **Traditional Pub Grub**

Sunday Lunch served 12.00-4.00pm

EVENTS

Open Mic Night - 2nd Thursday of the month - 8.30pm onwards

Feb 21st - **Cliff Bywater solo singer/musician**

March 20th - **JT4 covers band**

April 17th - **Disco Party Night**

May 13th - **Black Fly**

All events
commence at 9pm
(adults only)

THE BRICKLAYERS

23 Leicester Road, Sharnford, Hinckley LE10 3PP

Tel: 01455 271799

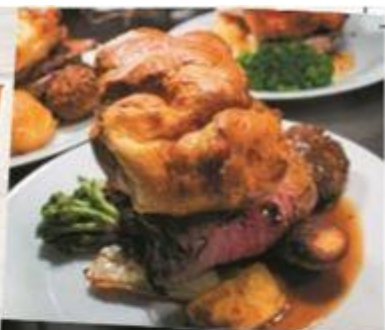
Like us on



All menus available on our website at
www.thebricklayers.org



Members
Discount



SHARNFORD GOLDEN JUBILEE COMMITTEE VILLAGE FETE

Save the date for the fete! - Sunday 7th June 2020

The village fete this year will be on **Sunday 7th June 2020** 12 o'clock to 4 o'clock, on the park in Park View. We haven't yet decided on a theme for the fete, but we will let you know in a flyer that will be delivered nearer the date. There will be lots of chances to get involved with this great village event.

There will be the usual favourites such as raffle, tombola, duck races, cakes, refreshments, BBQ and bar. This year music will be provided by Enderby Youth Band. We will be asking for donations of tombola prizes, bottles for the bottle stall, toys and books etc. again this year. All contributions are greatly appreciated so please start saving anything suitable. We will do a door-to-door collection at a date nearer to fete day.

Profits made on the day will be shared amongst various village groups to help them with their activities so please try and get involved. If you can't make it on the day, there are raffle tickets available and ducks for the duck races to buy. If you would like to help with organizing the fete please do not hesitate to contact us. Everyone is welcome at the planning meetings or you can help on the day.

Sue Stanley (Tel: 273861) SGJC Secretary



Come and meet your County Councillor

Maggie Wright

Weds 25th March 2020 at 2pm – 4pm

Youth Club/Community Hall, Park View

**An open session to come along with questions,
issues, or just a chat**

SHARNFORD VILLAGE SHOW

A big thank you to everyone who supported us in 2019. Thank you to those who donated raffle prizes, The Garage, The Sharnford Arms, The Bricklayers and Sapcote/Sharnford Garden Centre and apologies to anyone I have forgotten. Thank you to Sharnford Lodge for sponsoring the £25 best in show prize, won with a magnificent Stained Glass panel made by Rosemarie Simpson. Thank-you to everyone who entered the show, or who just turned up and supported the Show.

This year we start off on a sad note with the loss of John Proctor. A man who was involved in so much of village life, from his arranging coach trips to organising holidays. John was part of our initial group which started the Village Show back in 2009. Then when we took on the Plant Sale he got stuck in. We will all miss his cheerful disposition and cheeky humour. We will not be running the plant sale in future. So there will be no Plant Sale in May. An event which we took over from the Evergreen ladies when they hung up their trowels. A village event which has been going for many years, so if any group in the village wants to take this on let us know and we are happy to run through how we did it, This is a fund raising opportunity for anyone prepared to take it on.

The Village Show will be on Saturday 12th September. The schedules for the Show will be available from May.

We still have funds available, which we would love to use to help with village projects. Though obviously, without the plant sale we will not have the same kind of funds available. If you are a local group needing funding for a project please contact us so can see if we can help.

We look forward to seeing you at the Village Show

Tony Curtis and the team.

JON WARNER & SON CONSTRUCTION
BUILDING CONTRACTORS

New Developments, Extensions and Alterations
Insurance Work Undertaken

For a Free Quote

Tel: 01455 274509

Mobile: 07930 322034

Local Family Business Est.: 1990

Mixed level weekly classes all welcome, age 16 and above:

Mon 6.15pm George Ward Centre, Barwell

Mon 7.30pm George Ward Centre, Barwell

**** Tues 12:00 Midday Sapcote Pavilion**

Tues 6.30pm The Stute, Earl Shilton

**** Wed 6.15pm Dadlington Village Hall**

Thurs 10:00am Sharnford Community Centre

Thurs 12.15pm Parish Hall Market Bosworth

Fri 10:00am Sapcote Pavilion



** Yoga with Weights...Please bring a pair of hand weights to use in these classes.

**Fitness based classes to improve mobility, balance,
strength, flexibility.**

**Yoga classes using hand-weights to increase
strength & bone density.**

**Fully Qualified & Insured Instructor with over 27 years teaching
experience, First Aid Trained.**

All classes £7 pay as you go

For more info: www.yogawithadele.co.uk

Email: yogawithadele@live.co.uk

Call/Text: 07837927227

Facebook: www.facebook.com/yogawithadele1/



SHARNFORD METHODIST CHURCH

We have All Age
Worship on
Sundays, starting
at 10am and all are
welcome. Please

see the church notice board for details of the
services.

A joint fellowship group with St Helens
meets at the chapel on the first Thursday
evening of the month, 7.00 – 8.00 pm.
Everyone is welcome to come along.




Stories & Rhymes

For the under 5's

Every Tuesday

(Term Time Only)

10.30am—11am

Sapcote Community Library,
Church Street

Come with your children and share
Stories, Songs & Rhymes

FREE – DONATIONS APPRECIATED



Sharnford Christmas Tree Festival 2019



The church looked amazing, decorated with lots of trees contributed by individuals, groups and local businesses. We would like to thank everyone who provided a tree, helped and especially the visitors who came to admire the trees, buy gifts and goodies and enjoyed the refreshments on offer. We are delighted to have raised over £700 towards the first phase of work on our grade 2 listed building.

Coffee Mornings

The first Saturday of each month we have a coffee morning, with second-hand book sales, cakes and bring and buy. Lots of refreshments are consumed and money raised for good causes.

Saturday March 7 th	:	Fair-trade (Joint at the Evergreen Hall)
Saturday April 4 th	:	Send a Cow
Saturday May 2 nd	:	Leprosy Mission
Saturday June 6 th	:	Rainbows Children's Hospice

Tuesday Coffee and Cake

Drinks, delicious cakes, a craft stall, chat and laughter continue to be enjoyed by all. Quite a few people have been buying extra slices of cake to take home! Come along and enjoy chatting with friends old and new. Bring your children or grandchildren along too. They are held on the second Tuesday of every month 10.00-12.00 - March 10th, April 7th (changed due to Easter), May 12th, June 9th and July 14th

Teams4U



Our shoeboxes this year went to children and families in Belarus and it is lovely to see the happy smiling faces as they received their gifts,. We have already started preparations for this year's boxes. We need lots of empty shoeboxes, so we will be delighted if you can recycle yours by passing them on to us.

Penny Ross 01455 272797




FREE CHILDRENS COMPUTING CODING

Held at the at the Evergreen Hall 3.30 – 5pm

**Thurs March 19th, Thurs April 23rd
Thurs May 21st and Thurs June 18th**

Children aged 6 – 11 years
Having fun and learning
the basics of computer
programming.
Everyone is welcome,
with no experience of
coding needed.
Bring your own laptop if
you have one, There are a
small number of laptops
available to borrow.

Penny Ross



Tai Chi

*Slow down and relax.
Improve health and well-being*

The ancient Chinese practice of gentle coordinated movements concentrating on releasing tension and increasing relaxation.

***Broughton Astley, Village Hall; Monday 1-30 - 2-30
George Ward Centre, Barwell; Tuesday 7-00-8-00***

***Non-aggressive - Non-competitive - Suitable for all ages -
Beginners welcome***

SAPCOTE COMMUNITY LIBRARY



Church Street
Sapcote
Leicestershire LE9 4FG
Tel: 0116 3053674

www.sapcotecommunitylibrary.org.uk

FORTHCOMING EVENTS

Wednesday lunchtime talks at 12.30pm – 1.30pm

Listen to entertaining and informative talks and enjoy delicious scones, tea & coffee for only £4.50

Saturday, 28th March - Antique & collectibles valuation day

By Hanson's Auctioneers at 10am – 2pm. £2 per item

Wednesday, 20th May - Marianne Whiting 'Shield Maidens in Myth and Reality'

Saturday 30th May - Sapcote summer fayre

Wednesday, 2nd September- 'Technology that sees when you can't - Changing lives of people with sight loss' By Brian Negus

Wednesday, 25 November - 'Around Britain in 60 minutes' By Mike Lee

Opening Times

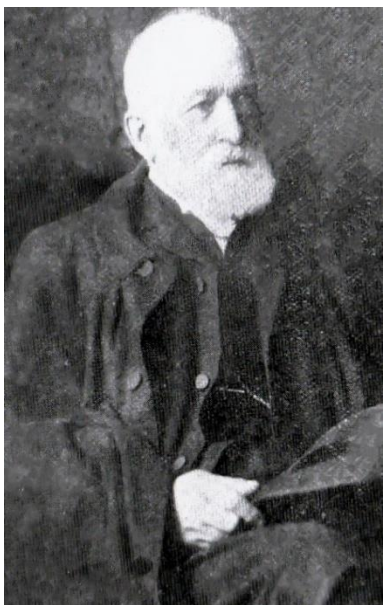
	Morning	Afternoon
Monday	9.30am – 12.30pm Including <i>Coffee Morning from 10am</i>	CLOSED <i>Knitting Group 1.30pm – 3pm</i>
Tuesday	10am – 12 noon <i>Stories & Rhymes 10.30-11am</i> <i>Book Club 1st Tuesday 10.30am</i>	5pm – 7pm
Wednesday	CLOSED	Wednesday lunchtime talks - 12.30pm – 1.30pm
Thursday	CLOSED	2pm – 5pm
Friday	CLOSED	2pm – 5pm
Saturday	10am – 1pm	CLOSED
Sunday	CLOSED	CLOSED

Teresa Lee – Volunteer Co-ordinator

WHO DO YOU THINK YOU ARE?

I have always admired how the above television programme always seems to arrive at some grand family name or family seat at the ending of the programme. Fair dues to their genealogical research teams, but could I do the same with a Sharnford family? Was there a family in Sharnford that had grand connections? This was truly to be a shot in the dark.....

Two families gained my immediate attention. The Clarkes - whom were very wealthy – a probate of 1836 for Thomas Clarke shows canny investments **alone** in Scotland to be worth at today prices £2.2 million – but unfortunately I could not find any grand connections. My second subject was to be more successful -the Rev. (later Canonised) Henry Lacon Watson who although not Sharnford born, raised a family here, a humble man, who served devotedly our parish of Sharnford for 53 years and died in post 1903. Home for this family was, as you would expect – the village Rectory.



Above- the Rev. Henry Lacon Watson and the Rectory, Sharnford - which he had built in 1851 at a cost of £1200. (£117,000 at today's price). It replaced the old parsonage from which a board was salvaged quite legibly reading 'MB THE PARSON BILT THIS HOVSE 1639'.

I began my search in St. Helen's churchyard; Henry's tombstone is there - and reveals his date of birth (19 Nov: 1823) and death. (12 Nov: 1903). His 2nd wife is also in the same grave - Ellen Charlotte who died 9 June: 1903 aged 68 yrs.. The Reverend's brother, the Col. John Edmund Watson who died 17 Aug: 1881 aged 55 yrs. lies close by.



Henry Lacon Watson was born in east Norfolk. At the age of 19 he entered Cambridge Caius University; ordained priest 1847; Curate of Bexhill, Sussex 1847-1850; and then Rector of Sharnford.

He married Maria Burnett Jan: 16 1851 – at St. Martin-in-the-Fields, Westminster, London. She was the daughter of Sir William Burnett MD, KCB, RN. - **See right** - (As a young naval surgeon William Burnett was present aboard the ship *Defiance* at the Battle of Trafalgar 5 Oct: 1805 – his macabre workload on that day was 17 crew killed and 53 injured). He eventually became Physician General to the British Navy).

Henry Lacon Watson's wife Maria died Dec 1852 during childbirth, but their child christened Maria was to survive until 1944. He sought a new wife that was to be - Ellen Charlotte

Richardson, the eldest daughter of Rev. Henry Kemp Richardson of Leire.

The marriage took place 17 Sept: 1857 at Leire. Three children were born of this union – Ellen Louisa (1861-1862); Katherine Gertrude (1865 - ?); Edmund Henry Lacon (1865-1948). Edmund would follow in his father's footsteps and become a Rector.

Henry L.W's daughter Katherine Gertrude was to marry the Rector of Stoney Stanton – the Rev. A. E. Disney 21 Sept: 1886 at Sharnford. The Rev. Disney was born at Tralee, Co. Kerry, Ireland. It was reported in the newspapers at the time that the famous cinematographer Walt Disney visited Tralee in search of his Disney family roots.

Sharnford Garage Ltd

M.O.T WHILE-U-WAIT

We test cars, light vans,
motorbikes and 3 wheelers

Full Service & Repairs on all

Makes Petrol and Diesel

Courtesy cars Available

Leicester Road, Sharnford

01455 272336

Henry L.W (Sharnford) was born at Melton-Magna, Norfolk – the seventh child of fourteen born to the Reverent Fisher Watson (1789-1873) and his wife Louisa Sarah Lacon (1793-1865). Of the fourteen children – 8 girls and 6 boys – 4 of the boys were to become Rectors while a fifth was to become a Colonel in the Royal Artillery (he is buried at St. Helens) A sixth was become an Admiral in the Royal Navy. I have yet to uncover Henry's eight sisters marriages – but I am sure they would have been advantageous in choice of husbands.

Henry L.W's parents (Rev.Fisher Watson and Louisa Sarah Lacon), were married in Great Yarmouth 20 Nov: 1815.

Fisher Watson's parents were John Watson Esq. and Mary Fisher who

were married in 1780 at Ormsby St. Michael, Norfolk. There was as far as can be determined, just two children from the marriage – Fisher and Harriet. Harriet was to marry Samuel Tolver of Yarmouth (*oil painting not shown due to space*) .

Above – Eulogy for Henry L. W's. brother Admiral Sir George Willes Watson KCB,

The Rev. Fisher Watson's wife , Louisa Sarah Lacon was the sixth and youngest child of Sir Edmund Lacon 1st. Baronet and his 2nd. wife Lady Sarah Mortlock Lacon. There baronial seat was Ormsby House, Ormsby St. Michael, Great Yarmouth.

The Navy has lost one of the most notable of its retired veterans by the death of Admiral Sir George Willes Watson, which took place on April 25, after a long and tedious illness. Sir George was a son of the Rev. Fisher Watson, who is remembered by several generations of old Lancing boys as Vicar of Lancing parish church. He received his commission fifty-six years ago, and saw his first service in the Chinese War of 1841. In the Crimean War he distinguished himself as senior Lieutenant of H.M.S. *Agout*, *Desperate*, and won the Crimean and Turkish medals by the gallant part he played in a night assault on the seaboard fortifications of Sebastopol. A few years later he won considerable official recognition by his share in the laying of the telegraphic cable between Cagliari, Malta, and Corfu, and after holding several important commands was made Admiral-Superintendent of the dockyard at Chatham. He retired five years ago, after several years of office as Commander-in-Chief on the North American and West Indian Station. He married a daughter of General John Campbell, of the Gordon Highlanders.




Photo Elliott and Fry, Baker Street.
THE LATE ADMIRAL SIR GEORGE WATSON, K.C.B.

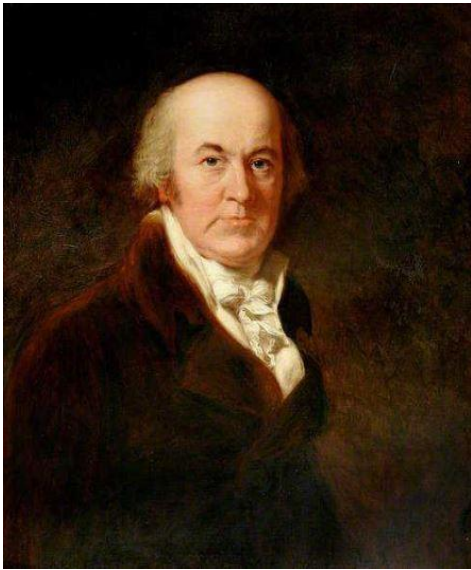
W J EDGE & SON BUILDERS LTD

BUILDING CONTRACTORS

Phone: 01455 271321 Mobile: 07831 181079

Residential & Commercial, New Developments,
Extensions, Alterations, Hard Landscaping

Estimates Free



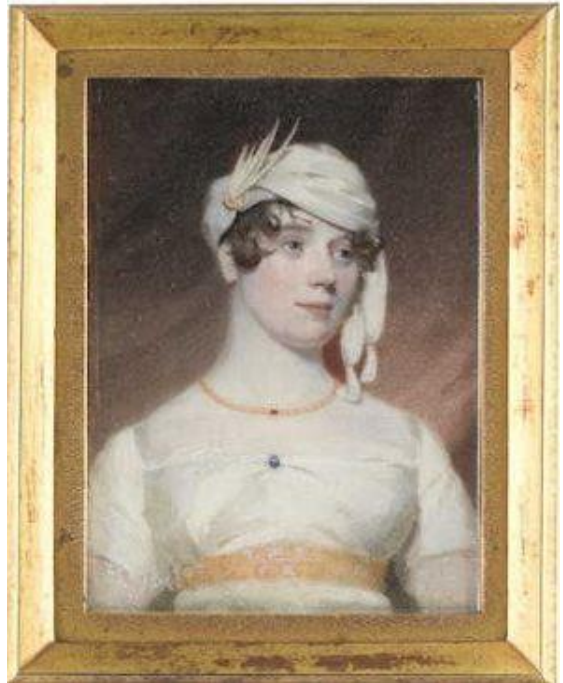
Below – Lady Sarah Mortlock Lacon
– wife of
Sir Edmund Lacon - mother of Louisa
Sarah Lacon, the
the wife of the Rev. Fisher Watson.

Left – Sir Edmund Lacon 1st Baronet
(1750-1820).

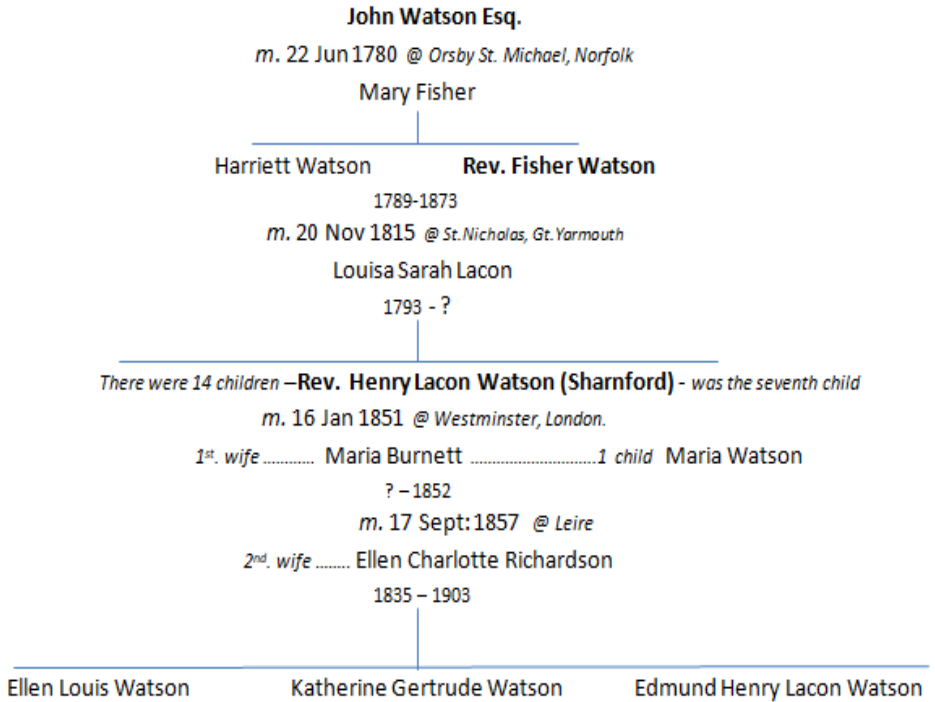
One-time Mayor of Great Yarmouth, his business ventures included a brewery, corn merchant, maltster. He was also founder of the bank of Lacon & Youell (that became the well- known Lloyds Bank we know today).

Sir Edmund Lacon was also involved in the very lucrative whaling industry centred at Gt. Yarmouth and Whitby.

Whalebone (for ladies corsetry and dress hoops) and whale ivory were valuable, but the main profits came from oil derived from whale blubber. The oil was in demand because of a shift from candle lighting to whale oil lamps and prices varied at the quayside from £23 to £50 per ton (a liquid ton was 197 litres). Vast fortunes were to be made. It wasn't until the advent of a geological sourced kerosene (the derivative being paraffin) which was a cheaper, cleaner superior fuel for lighting, that there was to be a sharp decline in the whaling industry.



The Watson family



This short piece only scratched the surface – three generations here. But I managed to trace the Watson family back to the 17th century. Who would have thought such a humble man as the Rev. Henry Lacon would have such illustrious ancestors. I was pleased to discover three oil-on-canvas portraits and a newspaper eulogy, which are included here. But there were others found which I cannot include for this piece was only to be a short taster.

Certainly the Watson's would have been worthy of that television programme in our title- our Sharnford connections – albeit loosely - to the Battle of Trafalgar, Walt Disney, Lloyds Bank and the whaling industry.

Researching this article was full of surprises which I cannot convey in only 2 or three pages – but I feel that I did answer the challenge that I set myself. As with any deep research it requires plenty of patience and lots and lots of luck!

WALKIES



- Pet Sitting
- Individual Walks
- Group Walks
- Vet Visits and more...

www.mbfwalking.co.uk

alex@mbfwalking.co.uk

07821 752 585



SHARNFORD EVERGREEN CLUB

Sharnford Over 60s Youth Club

Everybody welcome – Join in a relaxed and enjoyable morning with friends!

Table Tennis, Bridge, Bowls and Darts

Coffee & Biscuits!

Every Wednesday: 10.00-12.00

In the Youth & Community Centre



December 2019 was a busy month for us. The Christmas Fayre was well attended and everyone was in a good seasonal mood, and we had a Christmas lunch at The Badgers Mount - delicious. Finally we held the annual social with bingo which was good fun. There was a Bacon Buttie morning on 4th January, so it was "Happy New Year" to everyone over a buttie or two

and a hot drink. Also in January there was our annual trip to the Concordia pantomime which everyone enjoyed. The best one ever was the consensus.

Our regular meetings restarted on 5th February and it was good to get together again, but it is with great sadness that I have to report the death of John Proctor following a number of weeks in hospital. John had been a member of the Club for many, many years and was a leading light with his ideas and suggestions for outings and events etc. We will all miss him and our thoughts are with Barbara and the family. The Club meets every two weeks on Wednesday afternoons for games or just a chat followed by a high tea. Do come and join us if you are over 60 and live in the village or surrounding area - you would be very welcome.

In addition to the fortnightly meetings we have an annual dinner in the Spring, an afternoon tea in August, a fish and chip supper in September, a Christmas lunch and a social get together with bingo also in December and then there is the outing to the Concordia pantomime in January. Our advert contains further details, or please contact Jean Dale, Secretary, on 274772 to learn more.

Carol Hunter – Chair

RUSSELL BURROWS

Plumbing & Heating Services

Central Heating Gas Installation
Bathrooms Leadwork
Roofing & Building Services
Maintenance Servicing & Repairs

Gas Safe No.185016

Tel: 01455 271441

Mobile: 07947 787455

Fax: 01455 271553

SHARNFORD PARISH COUNCIL CHAIRMAN'S REPORT

In my last report I mentioned that tree surgeons had been busy in the village carrying out vital tree maintenance to comply with our legal obligations. Well, they have been back again, in February, carrying out the second phase of tree maintenance. Most of the work is focused in St. Helen's Churchyard. I also mentioned in December's Sharnford News that someone has connected a toilet to a storm water pipe, with the outflow discharging into Sharnford Brook, instead of connecting to a sewage pipe. This is bad enough due to the pollution hazard but to make matters worse, wet wipes are being flushed down the toilet, causing blockages in the pipe. This resulted in gardens being flooded on Park View and Henson Way after heavy rainfall. Leicestershire County Council are investigating with the possibility of enforcement notices being issued.

The Parish Council have been busy producing the budget for the next financial year which begins on 1st April 2020. The budget comprises of the following payments: Insurance, Bank Charges, Clerk's Salary, Grass Cutting, Tree Maintenance, Website, Hanging Baskets, Lighting on Poors Meadow, Donations to Voluntary Groups, Audit & Accountancy Fees, Cemetery Maintenance, St, Helen's Churchyard Maintenance, and Hire of Sharnford Evergreen Hall. In addition, there will be one-off costs for: refurbishment/replacement of notice boards, and replacement of the Community Hall fence. This totals £31,575 for 2020 but because of the Parish Council being financially astute through 2019 and making careful use of reserves, the request to Blaby District Council will be kept down to £25,000. This equates to an annual rise in the parish section of Council Tax of just over

£10.60 for a band D property. One cost is missing from the budget which is a figure to replace the worn out path at St.Helen's Church. I have received a quotation of £10,000 to replace the old tarmac with a bonded resin path. The Parish Council are looking to apply for grants and/or donations to meet this cost. Hopefully some kind benefactor will come forward.

You may notice changes on The Park. Someone has thoughtlessly been riding a horse on The Park which has caused many divots in the rain sodden ground. This has caused sprained ankles and injured dogs. One injured resident has complained to Blaby District Council, who own The Park, and even though there have been a number of complaints over the last two years, Blaby have at long last reacted. A kissing gate has been



installed at the footpath and a field gate installed at the main entrance. Contractors were going to fence off the entrance from the Community Hall car park but we managed to stop this, with a narrowing of the entrance as a short term remedy until a more acceptable permanent design can be found. This should stop damage caused by horse riding, albeit at considerable cost!

Blaby District Council have offered to give The Park to Sharnford Parish Council but after looking at the annual cost of maintenance, with grass cutting and responsibility for all of the trees adjacent to the river, we decided the cost of £10,000+ per year was too much of an increase in Council Tax.

Our Parish Clerk, Tracey Avis, has unfortunately resigned from the position and so we are now looking to recruit a new clerk. Posters have been on the notice boards, Facebook, and the parish website. Hopefully we will be able to recruit from the candidates who have shown an interest.

Another loss to our parish and ward is Councillor Sheila Scott. Sheila has decided, after ten years hard graft as a District Councillor, to retire.

Sheila has been, and still is, a valued friend to Sharnford and will be greatly missed. All the best for the future Sheila.



STOP PRESS

Sharnford hit by flooding. The River Soar came very close to rising above the bridge and closing the B4114 Leicester Road on Sunday 16th February. Aston Lane flooded at the bottom of the hill with cars breaking down due to driving too fast for the conditions. Poors Meadow was under water and should be renamed Pool Meadow if this happens again. The younger ones amongst us may not realise that there is a massive water overflow tank below Poors Meadow which should be sufficient to hold excessive flood water.



TUESDAY COFFEE AND CAKE

Sharnford Methodist Church, Chapel Lane,
Sharnford LE10 3PE

2nd Tuesday of the month

10.00—12-00pm

March 10th, April 7th (change of date due to Easter),
May 12th, June 9th, July 14th, August 11th

Take a break

Come along and meet friends old and new

Enjoy a drink and delicious homemade cake

Craft Stall

Children Welcome

Unfortunately, it is not big enough.

I am sure some residents had problems, especially with toilet back-up due to the sewage pumping station not being fit for purpose. Severn Trent Water and the Environment Agency have been told time and time again that we need a new, larger capacity, pumping station. STW answer "too expensive"!

Luckily most of us, I hope, had dry homes, even if the roads were blocked. We were lucky this time but we need to plan for the future. Jack Feast, our Flood Warden, is co-ordinating a Emergency Community Response Plan, with the aid of Leicestershire County Council Resilience Partnership Team. This includes identifying local risks and what measures are required to reduce them. Jack and the Parish Council cannot do this on their own. We need to organise a team of volunteers to collaborate a Community Response Plan. We will be arranging an open meeting in which people can discuss their priorities for the plan and identify who would be interested in helping either to create the plan and/or be part of a Community Response Team. The meeting will be arranged in the next few weeks. Keep a look out for information on noticeboards, website, and Facebook.

Parish Councillors hold a monthly meeting every third Thursday of the month at 7.30pm in Sharnford Evergreen Hall. All residents are welcome to attend and can raise any issues that affect the village. Your Councillors are:
Mike Shirley – Chairman , Jack Feast – Vice Chairman – Flood Warden
Sue Stanley, Martyn Dalton-Brown, Gary Peryer and Lee Martin
Don't forget to look at our website on for what is going on in the village and please contact me if you want to add anything.

Mike Shirley, Chairman – Sharnford Parish Council



SHARNFORD EVERGREEN CLUB

Open to anyone over 60 who lives in the village or surrounding area

ALL WELCOME

Come and join us at The Hall in Sharnford - meetings are every two weeks on Wednesdays at 3 pm. High tea is enjoyed at each meeting after games. In addition, our annual programme consists of a visit to the Concordia pantomime in January, a dinner in the Spring, a cream tea during the summer, a fish and chip supper in September and a Christmas social.

For further details please contact Jean Dale, Secretary, on 274772

SHARNFORD TRAFFIC ACTION GROUP (STAG)

It has been a quiet few months for STAG. The B4114 Average Speed Cameras appear to be doing their job, although we haven't received up to date information from Leicestershire County Council for quite a while. Aston Lane continues to be blighted with speeding drivers. LCC Highways are yet to reply to a query about traffic calming measures.

The main area of concern at the present time is Smockington Hollow and Highcross Road junctions.



This particular stretch of the road in South Leicestershire has become somewhat notorious after a series of collisions have been reported to emergency services over the years. In more recent times the amount of incidents involving cars has not let up.

There have been a total of 25 collisions between 2014 and 2018

on the stretch between High Cross road and the junction with the M69 according to the data published by Highways England.

The same statistics show that there have been over 40 casualties along this stretch of the road.

The data shows that 35 of those casualties suffered slight injuries with a further five deemed serious. But the injuries go back a lot further with a resident from Earl Shilton died in 2011 after a collision with a lorry.



Another death occurred recently after a woman died on 22 October 2019.

Highways England has now decided to invest £3 million on safety measures on this section of the A5.

Our MP Alberto Costa has met with the Road Minister to pass on his concerns (see left).

"This was a very productive and



useful meeting with the Roads Minister and my new constituency neighbour Luke Evans to directly pass on the very serious concerns many of my constituents have about the A5," said Mr Costa. "Similar to my meeting with Highways England last week, I was encouraged to hear about the planned safety works on the carriageway such as vastly improved and additional signage, clearer road markings and the installation of new high friction surfacing."

"Highways England are investing a very welcome £3 million in road improvements and safety measures on this stretch of the A5 and I am really hopeful that these new works will have the desired effect in reducing the number of collisions previously seen".

STAG wants to carry on with the work and success of the last 12 years, but we need new members with fresh ideas if this is to continue. Please contact me on my new email

Mike Shirley – mikelennox99.ms@gmail.com

Carl Page

Building Contractors

...the complete solution

All building and renovation works undertaken - no matter how small

The Fairway, 2c Chapel Lane, Cosby, Leicestershire, LE9 1RG

Tel: Mob: 07887880745

Email: capagebuilders@yahoo.co.uk

BLABY DISTRICT COUNCIL

To all residents, you may already have heard that I am stepping down as your Ward Member for Blaby District Council. I have served the Ward for over 10 years and I have worked with some lovely people during my time in office and I will miss you all. There will of course be a by-election in the coming weeks, and I look forward to

Page 22

Please support our advertisers

meeting your new Councillor. During my time with you all, I have worked as Portfolio holder for Health, Well Being, as well as chairing the Development Control Planning Committee. I have held the Planning, Economic Development, Planning Enforcement and Planning Policy. I could go on all day, but I just wanted to say a big thank you for supporting me through the elections that took me to Blaby as your Councillor. I will still be supporting your events in your village. My love and best wishes to you all.

Shelia Scott

STONEY STANTON DOCTORS

Dr Charlotte Evans jointed us on Monday 6th January as a new salaried GP. She has relocated to Leicestershire from Oxford. She will be fulltime, 8 sessions a week spread over 4 full days Monday-Thursday.

We said goodbye to Dr Webb and Dr Ghumra over Christmas who left for family reasons. We wish them both well for the future.

Sharnford Art & Craft Social Group

Sharnford Youth and Community Centre, Park View, Sharnford, LE10 3PT

Got an art or craft project on the go? Would you like some company at the same time? We are an informal group who bring our own projects to work on, and enjoy a social evening whilst we do so.

We meet nearly every 2 weeks on Mondays - 7.30pm to 9.30pm, at the Youth & Community Centre on Park View, although it does sometimes change to fit in with School or Bank Holidays. Our 2019 dates are overleaf.

2020 Dates

Starred Dates are during the Summer Holiday. Please check that we are meeting by contacting us

March	9 th	23 rd	
April	6 th *	20 th	
May	4 th	18 th	
Jun	1 st	15 th	29 th
July	13 th	27 th *	
August	10 th *	24 th *	
September	7 th	21 st	
October	5 th	26 th	
November	9 th	23 rd	
December	7 th		

If you would like to contact someone, please call Gabrielle Bryan on 01455 631026, or email gab.h.bryan@gmail.com.

Please support our advertisers



SHARNFORD EVERGREEN VILLAGE HALL

During December we held our usual Christmas Fayre which raised over £1600 for the maintenance of the Hall and also for our Evergreen Club members. This is our major fund raiser during the year and the money is used to improve the facilities at the hall and provides extras for our Club Members.

During the year our Bacon Buttie mornings continue to be popular, with two organised for charities. Details of our next buttie mornings can be seen opposite.

We hope you will continue to support these mornings. They are great social village events and help raise money for both village and charity causes

Rosemarie Simpson

SHARNFORD EVERGREEN HALL

BACON BUTTIE DATES 2020 - SATURDAYS

SATURDAY 7TH MARCH AT 9.30
(FAIRTRADE & ACTION AID)

SATURDAY 25TH APRIL AT 9.30

**THESE INCLUDE NEARLY NEW CLOTHES,
CAKES, JAMS, BOOKS ETC**

To advertise in the **SHARNFORD NEWS** please contact
Email: sharnfordnews@gmail.com

Editorial Team: Ian 699051, and Jean Ryan 615820

Treasurer: Dave Sewell 272901

Please note that the deadline for articles for the next issue of Sharnford News is the May 20th 2020

SHARNFORD PRIMARY SCHOOL



Charity Fundraising

We raised over £100 for Save the Children at Christmas time by dressing up in our best Christmas jumpers! We also dressed in red, white and blue to celebrate Australia Day and to raise funds to go towards supporting animal charities down under.

Sharnford Primary School PTA

As always our PTA are working tirelessly behind the scenes to fundraise all whilst providing fun experiences for our children. Our current project at school is to raise enough money for a separate small building which will be used as a retreat room and a library space. The Christmas disco was such a hit again this year! The children loved seeing Santa and dancing the night away! Santa's Grotto looked amazing as always! The PTA also ran a Christmas workshop for every child to join in with after school where they wrapped presents for those special people at home and made cards and crafts too.

Christmas Tree Festival

Every child went to the Methodist Church to see all the Christmas trees in the festival and it was lovely to see ours there too! There was such a variety and some really amazing creations! The children were given a quiz

by Mrs Haddon and then she told them a story before giving them an activity to complete.

The Grumpy Sheep

The EYFS and KS1 children were absolutely brilliant in their production of 'The Grumpy Sheep' nativity this year. It was lovely to see how well they knew their lines and to listen to how beautifully they sang! So many parents, carers and people of the wider community came to see us which was a real treat!

Christingle

Mrs Haddon from the Methodist Church led us all in a lovely Christingle service! The children sang a song all about the significance of the Christingle and, courtesy of Redwood's Christingle-making skills, were able to take one home at the end of the day!

**SHARNFORD EVERGREEN
VILLAGE HALL**



The Evergreen Hall is available for Hire 7 days a week.

There is a main hall, with tables and chairs, a small meeting room, toilets, including disabled, stage and a fully fitted kitchen with crockery and cutlery, cooker for reheating (but not for full cooking)

£12 per hour for casual hire

Regular Groups enjoy a reduction in rates
Charity events are discretionary but usually village charity events are free or by donation

We now have a digital projector and screen. These can be hired for the showing of films etc. at a fee of £10 per session. All licences are in place for the showing of films.

Telephone: Margaret 01455 274038

Tree Planting

This year we were approached by The Woodland Trust to see if we would be interested in planting trees on our grounds. They donated 140 trees of all different varieties and the children had a very wet and muddy time of planting them all! However, it was fabulous to be involved with the Trust in order to help improve our school grounds and to help the environment too! We are now looking to head towards our Green Trees Award.

Y6 Warning Zone Trip

The Y6 children had a fabulous time at the Warning Zone. They had a full morning session based around internet safety, followed by activities in the afternoon which focused around keeping themselves safe in the outside world



You can follow us on Facebook at Sharnford CofE Primary or check out our website: <https://www.allsaintsandsharnfordschools.co.uk/>

School Council

CLASSIC SPORTS CARS – SHARNFORD TO RUTLAND WATER

I am Dave Sewell and as well as being a member of the Sharnford News team, I am a member of the Midget and Sprite Club (MASC). Jan and I have owned our 1959 Austin Healey Mk1 Sprite, known affectionally as a "Frogeye Sprite" for obvious reasons, for 35 years.

What follows is a report written by the leader of our Central Group of the MASC, of our Rutland Tour on Sunday June 30th this year. It appeared in our Club magazine MASCOT.

Thirteen may be unlucky for some, but for the Central Group of the Midget and Sprite Club it was the perfect number of cars for our well-planned summer run out to Rutland Water. Dave Sewell had suggested the idea earlier in the year and members were soon keen to raise their hands and it became a definite entry in our event diary. Dave had planned the run in great detail handing out tulip route maps and detailed instructions before we set off. Once we had all assembled in the



Dave leads the convoy from Sharnford

Bricklayers pub carpark Sharnford, Dave led off the convoy on a perfect sunny day for a drive.

Following on were Kym, Tim and Stan, all joining us for the first time at a Central event. Weaving our way through beautiful English villages, Great Glen, Burton Overy, Tugby and Newton Harcourt we arrived at Rutland Water right on schedule, everyone still in convoy. It was here Dave played his ace card - He had arranged for all the cars to park along the waterfront near a cafe. It was the perfect place to sit, chat, have lunch and buy a refreshing ice cream. It was also here that we were joined by Jason Elliott who has recently started the Lincolnshire area group. A great chance to meet up and all be part of the MASC family.



*Hungry Hippos! Frogeye Sprites
all in a line during lunch break*

Chairs and tables packed away we formed a neat line across the car park and headed off for our return journey. A couple of cars had to stop for fuel but Dave had also thought of this and had prearranged a stop off point at Eyebrook Reservoir so we could all meet up again and remain in convoy. The WW2 Dambusters had practised their runs here and it was also a good place to try and squeeze everyone into a group photograph for the family album. The return journey took

us under the Welland Viaduct, through Peatling Parva, Gumley, Dunton Bassett and back to our starting place Sharnford. Around one hundred miles, mostly in full convoy, not a single breakdown or problem only smiles, warm wishes and loud applause to Dave for organising a great day out. I lost count of the people who waved as we drove past, gave way at junctions or just wanted to stop us and talk about our cars. A great day out and a great advert for being part of the Midget and Sprite Club.

Dave Warren Central MASC

A further report from Tim and Kym (their first run out with the Club). Well - after being members for many years (I am sure someone knows how many) and having owned what became the Sprite you see today for approx. 23 years, we finally managed to match a date on the Central events Calendar with a spare date in our diary. So with our Sprite turning 50 this year and having had plenty of previous adventures (and breakdowns) we set off into the unknown "A run to Rutland Water" with people we didn't know, so many questions, would they speak to us, were they friendly? On arriving at



Sharnford, the planned meeting point, we were the first to arrive or so we thought – Oh dear this doesn't bode well, but then someone approached us and welcomed us, unfortunately they were not in a classic (best not to ask why) quickly followed by others as they arrived, phew the natives were friendly!! Apparently, our Sprite has been seen out and about many times around the Hinckley area with Greg in particular wondering who we were and if we were members. The Sprite is used as soon as there is a bit of sun and is not kept for special events – hence it is not perfect, but we love it just as we loved the well planned run out to Rutland.

Although some of the route was familiar what a joy to find ourselves on roads we hadn't been on before with no chance of getting lost thanks to a detailed route map and directions. What a joy to witness the smiles and interest of others as our convoy



of cars passed by. Here's to finding some more dates that match, we might even make a monthly meeting. One complaint - I have a sunburnt nose and forehead, never mind it matches the colour of the sprite. Photo of Kym and Tim with their Red Sprite.

Ps: I am planning another drive from Sharnford this year around the lovely stone villages of Northamptonshire. Look out for us starting at the Bricklayers 10.30am on Sunday June 28th 2020.

Dave Sewell

SHARNFORD LADIES GROUP

The annual dinner was held this year at The Bricklayers, the food and company was enjoyed by all. In January, Jayne Good gave us a wet on wet oil painting demonstration. The finished picture of poppies was excellent and soon snapped up.

In March Janet and the Team will be telling us about quiz shows they have participated in on television. In April Keith Hextall, local historian is giving a talk entitled, 'It Started with a Barrel!' And in May we have David Bell talking about 'Leicestershire Ladies'.

Our meetings are held on the first Wednesday of each month at the Evergreen Hall starting at 7.30pm. The cost for visitors is £4.

Wendy Kendall Tel.273889 or Jean Ryan



Sharnford Primary School PTA

QUIZ NIGHT

Raising funds for a School Library

SUNDAY 29TH MARCH
@ THE BRICKLAYERS PUB, SHARNFORD

Doors open @ 7.00pm to start at 7.30pm

Tickets £10 per person inc sharing platter. Max 4 in a Team.

CASH PRIZE / RAFFLE

For tickets please text Kelly on
07706562468

Made with PosterMyWall.com

ST HELEN'S CHURCH



St Helen's ended 2019 with some fabulous Christmas celebrations. It was wonderful to see the church full of families hearing more about the Christmas story at our Christingle service on 22 December 2019. The collection at this service raised over £200 for The Children's Society so thank you to all who attended and donated.

Thank you also to all those who contributed to the "Reverse Advent Calendar" scheme for

Hinckley Food Bank. We managed to donate nearly 20kg of food - Well Done!

We were blessed to have so many with us to welcome in Christmas Day at our Midnight service and Carol Services at St Helen's, Sharnford and St Mary's, Wigston Parva were enjoyed by those who attended. A fabulous end to 2019!

Sadly, Blanche Higginbotham passed away in the early part of this year and her funeral took place in February.

Our usual services continue as normal at 9.15am every Sunday with our family service on the first Sunday of the month. Instruments are provided for all children (and enthusiastic adults!) to get involved and refreshments are provided at the end of the family service. All are welcome whether regular worshippers or attending for the first time.

Now that the worst of the weather is hopefully over, we look forward to a brighter time of year and our Easter celebrations:



22nd March 2020 9.15am - Mothering Sunday Service - with flowers for all mums

12th April 2020 9.15am - Easter Service with an Easter Egg Hunt after the service

Other exciting events are lined up for later in the year including the return of our Cream Teas in the summer. More details to be provided in due course – watch this space!

Rosemarie Simpson

SHARNFORD ARMS

Leicestershire Dog Friendly pub of
the year

RUN BY A BLACK LABRADOR
CALLED "SILKIE", COME AND SAY
HI AND TO STEVE TOO"



EASTER SUNDAY – petrol-heads
Bring all your cars, bikes anything
with wheels on. – BBQ



SUNDAYS – Breakfast 09:00 to
16:00 Sun flower Silkie Cafe &
Restaurant



DOGS ALWAYS WELCOME
THROUGHOUT

Join us on Facebook to see all
events and read all about us on
Tripadvisor



LEICESTERSHIRE POLICE

SCAM POLICE AND BANK CALLERS

Residents across Leicestershire, and nationally, have been receiving phone calls from people claiming to be from the police or their bank. The offender calls the victim, purporting to be a police officer, and tells them they are investigating a fraud on their bank account and have someone arrested. They might also claim to be from the victim's bank, again stating they are investigating fraudulent activity on their account.

What should you do if you get a call?

If you receive a call you're not expecting, you should be suspicious. The vital things to remember are that your bank and the police would:

- **Never ask for your bank account details or pin number over the phone, so do not disclose these to anyone, no matter who they claim to be.**
- **Never ask you to withdraw money and send it to them via a courier, taxi or by any other means.**
- **Never ask you to send your bank cards, or any other personal property, to them via courier, taxi or by any other means.**

If you are not happy with a phone call and are suspicious of the conversation you have with the caller then please end the call and report it to us on 101 before you pay anyone any money! Remember, no one would ever be threatened to be arrested for not paying money to the police or tax man from a 'cold call'.

NEIGHBOURHOOD LINK – HAVE YOU SIGNED UP?

We want to encourage as many people as possible to sign up to our community messaging system, Neighbourhood Link. You will receive regular emails keeping you up to date about local policing issues, good news stories, crime prevention advice, witness appeals and local events. It is very easy to do and free! Register at www.neighbourhoodlink.co.uk

SHARNFORD NEWS

We want your stories...

If you want to share any stories or you would like any history articles researching please contact us by email at Sharnfordnews@gmail.com.

Your stories could be in the next edition of the Sharnford news for all to read. We would also like to mention "Beat the Street" returns to the village from March. Can we build on the success of last year? Please go to the Blaby District Council website for details

SHARNFORD COMMUNITY CENTRE

MONDAY	ARTS AND CRAFT CLUB 7pm – 9pm	Come along and bring your own craft project to work on.	Gabrielle Bryan 01455 631026
TUESDAY	PILATES FOR RIDERS 7pm – 8pm & 8pm – 9pm	Solely for horse riders	Joanna Smith Joanna.smith@me.com
WEDNESDAY	OVER 60'S YOUTH CLUB 10am – 12.30pm	Join us for table tennis, indoor bowls, darts or just come along to meet up with friends and have a coffee and a chat	Derek Gibbons 01455 272401
	PILATES FOR RIDERS 7pm -8pm 8pm – 9pm	Solely for horse riders	Joanna Smith Joanna.smith@me.com
THURSDAY	YOGA 10am – 11am	Open to all. Come along to develop mind, body and spirit	Adele 07837 927227 yogawithadele@live.co.uk
	PILATES FOR ALL 1.45pm – 2.45pm	Working on core strength and flexibility. Open to all ages and abilities.	Joanna Smith Joanna.smith@me.com
FRIDAY	Currently available		

The hall can also be hired for weekend functions, please contact me on 271321

Julie Edge - Chair Sharnford Youth & Community Centre

Counselling/Psychotherapy

Looking towards a clearer, brighter future

There may be a time when you need to talk to someone who will listen to what you really need to say, helping you get an understanding of the present, in the hope for a better future.

We are local Person Centred Counsellors, fully qualified, registered and experienced in a wide range of issues supporting and helping adults, young people and children.

For a free initial session and discussion, without obligation, please contact:

Kelly Williams
Amukelani Counselling
07806 323 635
Kelerina@googlemail.com

Malcolm Soulsby
Six Acres Counselling
07715 178 874
www.sixacrescounselling.co.uk

VILLAGE BUS TIMES

Sharnford to Hinckley or Leicester (X55) - Monday to Saturday (not Sunday)
Hinckley via Aston Flamville & Burbage at 0758,0805,0900,1140,1430,1730 & 1930
Leicester via Sapcote, Stoney Stanton, Thurlaston, Enderby & Fosse Park at 0553 Mon to Fri, 0613 Sat only, Mon to Sat 0656,0944,1229,1523,1814

MOBILE LIBRARY – ROUTE 13

	Location	Start	End
Sharnford	Halls Crescent	09.30	10.10
Sharnford	Evergreen Hall	10.15	10.45
Wigston Parva	Village Centre	14.35	14.50

Visits on the 4th Monday of each month - 0116 305 3619

TAXI

Keep me handy

...call us and relax

Always a courteous service we offer:

- ✓ VERY COMPETITIVE RATES
- ✓ Local and long distance
- ✓ Airport and Seaports
- ✓ 4 - 8 seats available
- ✓ Holiday destinations

NO fare increase after 22.30pm, other firms charge a fortune ... **we don't**



STANTON TAXIS

Proudly serving the community for over 18 years

Call: **01455 27 21 89**
or **07760 767 046**

For further prices and to book visit our website... www.stantontaxis.co.uk

SHARNFORD VILLAGE INFORMATION SHEET

Organisation	Contact	Details
Blaby District Cllrs.	Iain Hewson 273957, Deanne Freer 07530 319637	
Community Centre	Julie Edge 271321	
Craft Group	Gabrielle Bryan 631026	Community Centre Mon(fortnightly) 19.30 - 21.30
Doctors-Broughton Astley	(01455) 282599	Evergreen Hall Thurs 12 - 13:30
Doctors-Burbage	(01455) 634879	Evergreen Hall Tue 11-12
Doctors-Stoney Stanton	(01455) 271442	
Environment Group	Naomi Allen, naomiallen38@gmail.com, 07930232648	Second Tuesday of the month at 7.30pm in the Evergreen Hall
Evergreen Club	Jean Dale 274772	Wednesdays twice monthly
Evergreen Hall	Margaret Sanders 274038	
Flood Warden	Jack Feast 274678	
Golden Jubilee Fete	Sue Stanley 273861	
Good Neighbour Scheme	Direct Help Line 07502 615535	
Leics. County Councillor	Mrs M Wright 07815 450031 Mrs.M.A.Wright@leics.gov.uk	
Methodist Chapel	Local Pastor Anne Haddon 617692,	
Over 60's Youth Club	Derek Gibbons 272401	Community Centre Weds 10 - 12.30
Parish Council Chair	Mike Shirley 07539 994707 mike.shirley@sharnfordparishcouncil.co.uk	Meetings held 3 rd Thursday at 19.30 Evergreen Hall
Parish Council Clerk	Mike Shirley 07539 994707	
Parish village website	www.sharnfordparishcouncil.co.uk	
Post Office	Eric and Gay Washbrook 272210	
St. Helen's Church	Rev Mick Norman 272215, Cynthia Oliver 272977	
Sharnford Ladies Group	Wendy Kendall 273889	1st Wednesday of month
Sharnford Pre-School	Paula and Joy 07925331497	Evergreen Hall
Sharnford Primary School	Mrs S Boyd-Hope, Acting Head teacher & Secretary 272456	
Sharnford Traffic Action Group (STAG)	Mike Shirley 07539 994707	
Sharnford Village Show	Tony Curtis 272532	