

SHARNFORD NEWS

1st March 2013

Issue No 45



A Project supported by Community Action, Blaby District Council.
Available at www.leicestershirevillages.com/sharnford/Sharnford-News-online.

SHARNFORD PARISH COUNCIL

The Parish Council has set the Precept for 2013, which it asks Blaby District Council to include in its Council Tax Demand, at a figure of £13,705 – actually a huge £2.00 LESS than last year!!! At very little more than an average £30.00 per household each year, this figure represents one of the lowest Parish Precepts in the County. Of course, keeping the figure so low does mean that there are limitations on what the Council can achieve and the amount of support that can be given to those groups that give the village so much of its vitality but Council members are determined to continue to do so wherever possible. The contributions to such as the Environment Group, the Jubilee Fete and STAG help to ensure that they always have a base from which to start each year. Poores Meadow, the Park View children's play area and the new burial ground all demand expenditure that needs to be provided from the Precept. Welcome support was forthcoming for the burial ground recently when a cheque was received from Sharnford Yoga Group "...towards the purchase of trees/shrubs...". Thank you!

Full information is provided on other pages of this edition of Sharnford News but the Parish Council is delighted to see the successful completion of the new Youth and Community Centre and its forthcoming Official Opening. The Project Committee that has overseen this development has been a Joint Committee of the Parish Council and the Youth Club Trustees and the whole process was started when Blaby District Council acceded to the Parish Council's pressure to hand over the old building and its site to the village. To be rid of the eyesore that housed the Youth Club three years ago and to see the new facility that has arisen is something of which we should all be proud. This is an asset that will greatly enhance Sharnford and, together with the Evergreen Hall, will provide facilities for all sections of our community. The Parish Council has contributed financially by covering the comparatively small shortfall that is anticipated there may be in the final budget.

As a result of our appeal in the December edition of Sharnford News we now have a small group of volunteers willing to keep the Brook clear of debris and obstructions. With the present swollen state of the waters, nothing can be done immediately but the Environment Agency have been persuaded to waive the fee they were proposing to charge for allowing us to undertake the work, and have agreed that some of their Field Officers will liaise with the group in determining what to do.

Various parking problems around the village are still giving rise to concern which the Parish Council continues to monitor and report. Particular issues are being discussed with Blaby District and County Highways with regard to proposed development at the top end of Brookfield. It has been made clear to those authorities that there are already difficulties

for buses going to and from the school and serious worries about access for emergency vehicles needing to negotiate this road. On-road parking is already a problem, which will be exacerbated if the proposed development goes ahead.

Derek Gibbons, Chairman

SHARNFORD IN THE SNOW – January 2013



Leicester Road



Aston Lane



Sam, Milly, Alexander, Kasper and Charlie



Henson Way

ST. HELEN'S CHURCH

It has been a long winter however, despite winds rain, more rain, frost, snow, floods and a plague of frogs (well probably not the latter –yet) we remained open for business and all our ordinary and special services took place as promised. Our February family service at the Evergreen Hall occurred on one of the relatively settled days of the quarter and we were delighted that, not only 26 adults attended, we welcomed 5 small children as well. This was very heartening as we hope when these infants grow a little they will enable us to restart the Explorers' group. A DVD was shown featuring our Bishop's visit to our sister diocese in Tanzania. The Anglican church is doing much good work there and we have decided to send the collections taken at our Lent Communion to Bishop Tim's fund for use in Tanzania.

Easter is early this year and our programme has already started. Our first Wednesday Holy Communion took place on Ash Wednesday and these will continue until Easter. Joint Anglican/Methodist Lent groups are being held on Thursday evenings in the chapel at 7.00pm.

The forthcoming programme is as follows:-

MARCH 1st Women's World Day of Prayer and a service will be held at the chapel at 7.00pm

MARCH 2nd Fair Trade coffee morning in the Evergreen Hall

MARCH 10th Mothering Sunday.

Flowers will given out at the morning service

MARCH 24th A memorial service for the recently bereaved will commence at 6.30 pm

MARCH 29TH, Good Friday - A service will be held in St. Helen's at 9.30 am

MARCH 31ST Easter Sunday -Holy Communion will be celebrated a 9.15 am.

In spite of the poor weather and the number of strange viruses circulating the area we are happy to say there have been no funerals held this quarter but we are really delighted to say that Ian Holliland and Fiona Bosworth celebrated their marriage on the 30th November 2012 and we wish them every happiness for the future.

Finally a short plea. We are going to Spring Clean our church on **23rd March**, so that it will glow for Easter, if you can possibly spare an hour to help us in this task could you please bring your duster along and give us a hand. We would be very grateful.

Estelle Perrett

SHARNFORD EVERGREEN CLUB

Another new year and the Evergreen Club have resumed their fortnightly meetings on a Wednesday afternoon at 2.30pm. In December the club held its annual Christmas Dinner in the hall which was enjoyed by 48 members and committee. The evening was rounded off with games of bingo. The Evergreen Committee would like to sincerely thank Andrew and Kaye Wormleighton for all of their hard work in catering for our dinner for the past few years, and of course all of their helpers.

We again visited the Concordia Theatre in January to see the pantomime Dick Whittington. As usual the performance was first class and we all went home with smiles on our faces.

Dates for the diary:-

13th April - Bacon Buttie Coffee Morning 9.30 at the Evergreen

21st May - Evergreen Outing, destination to be confirmed

15th June- Bacon Buttie Coffee Morning 9.30am

We look forward to another eventful year ahead.

Karen Smith Chairman



Residential Property Lettings and Maintenance

Your local independent firm specialising in Residential Lettings, Property Management, and Property Maintenance.

Full Management **£30 a month** fixed fee*

Free EPC or first months management fee for all new Fully Managed Instructions*

Website: www.millanepropertymanagement.co.uk

Email: info@millanepropertymanagement.co.uk

Tel. 01455 274253

*(subject to terms and conditions)



Beautiful Affordable Kitchens & Bedrooms



JTL Kitchens and Bedrooms Ltd
Hinckley Road, Sapcote, Leicester, LE9 4FU
Telephone: 01455 272333

We can give you a complete solution – including design, installation and all the building work. Or we can supply only or design and supply.

Call us on 01455 272333



E mail: info@jtlkitchensandbedroomsLtd.co.uk
Web - www.jtlkitchensandbedroomsLtd.co.uk



C. A. Page Building Contractors Ltd
9 Park View, Sharnford,
Leicestershire, LE10 3PT

Member of the Federation of Master Builders

All building and renovation works undertaken
- no matter how small

Tel: 01455 271423 Mob: 07887880745

Email: capagebuilders@yahoo.co.uk

QUIZ - REMEMBER 2012?

How good is your memory of the past year?...try this quiz

Events of the Year

- 1.What was the name of the royal barge which carried the Queen and the Duke of Edinburgh during her diamond Jubilee celebrations?
- 2.Which famous animal – the last known member of his subspecies – died in the Galapagos National Park on 24th June?
- 3.What is the name of the Mars science Laboratory’s robotic rover, which landed on Mars on 6th August?

Sport

- 4.Which two England footballers joined the list of players who have missed in penalty shootouts as England went out to Italy at Euro 2012?
- 5.Which two Scotsmen made surprise appearances during Andy Murray’s press conference following his US Open semi-final victory?
- 6.On a dramatic final day of the Ryder Cup at Medinah in September, how did late-running Rory McIlroy travel to the course?
- 7.“.....has scaled one of the great heights of British sporting achievements.” Who was David Cameron talking about? (a) Bradley Wiggins, (b) Any Murray, (c) Mo Farah

Hatched, matched and dispatched

- 8.Which American actor tragically lost his son Sage on 13th July?
- 9.Which Irish writer, who outsold Oscar Wilde and James Joyce, died on 30th July.
- 10.Which sportsman’s wife gave birth to twins Aisha and Amani on 24th August?

FILM

- 11.What piece of classic film memorabilia fetched \$480,000 at an auction in Beverley Hills in November 2012?
- 12.Who became the highest paid British actor after signing a deal worth £31 million in November?
- 13.Daniel Day Lewis who played the title role in ‘Lincoln’ is tipped for an Oscar, but which actor was originally cast in the role?
- 14.Who won Best Supporting Actor at the 2012 Oscar’s?

DISASTERS

- 15.What was the name of the cruise ship that ran aground off the coast of Tuscany in January?
- 16.The qualifying session of which sporting event was hampered by severe flooding on 6th July?
- 17.Which European country was struck by two major earthquakes in the space of nine days in May?

LONDON 2012

- 18.London became the first city to hold the Summer games three times, having previously hosted them in which years?
- 19.Team GB finished third in the Olympic medal table. Where did Team GB finish in the Paralympic medal table?
- 20.Ellie Simmonds and Jonnie Peacock were granted which honour at the closing ceremony of the Paralympics?

Answers as usual on the back page

Sharnford Garage Ltd

M.O.T. WHILE - U - WAIT

**We test cars, light vans,
motorbikes and 3 wheelers**

**Full Service & Repairs on all
makes Petrol and Diesel**

Courtesy Cars Available

**Leicester Road, Sharnford -
01455 272336**

SHARNFORD C OF E PRIMARY SCHOOL PTA

A Big thank-you to all who attended our annual Quiz on 8th February; it was lovely to see so many from the community of Sharnford coming to support the PTA and we hope having a fun time testing their little grey cells. Congratulations to the family Ross who retained their title, although it was taken to a nail biting tie break question with the 'Ne'er do wells'. We would also like to thank Tony Bolton for taking on the role of Quiz Master, something that he seemed a natural at and we look forward to many more years of his

quizzes.

The aim of the night, other than for us all to have a good time in good company, was to raise money for the PTA to enable us to meet some of the wish list from the school, we are pleased to say it raised almost £300. This money will be going towards purchasing Kindles for use by the children in school.

Last year:- Casting our minds back to last year we would also like to thank all those keen singers who joined us on our annual Carol Sing around the village. We managed to raise £105 for the Air ambulance. Thanks also go to Steve and staff at the Sharnford Arms for making us welcome with mulled wine and mince-pies.

In the run up to Christmas we also held a Christmas Disco and workshop for the children, these were both well attended and we hope that Parents/Carers enjoyed opening their specially chosen gifts on Christmas day.

Future events:- This term we will be putting on an Easter party for the pupils. We are also planning a Prepare for Summer Pamper Evening towards the end of the Summer term. We will publish further details, inc. Date, time and available treatments in the next edition of the Sharnford News, it will also be advertised around the village.

Chair

SHARNFORD ENVIRONMENT GROUP

Hello! You don't know me - I'm the new girl on the block. I say new, since my husband Don and I have only been with the Environment Group a short time compared with the other members.

We held our first meeting after Christmas, the other night, and I was asked if I would write a piece in the Sharnford News about what was going on environment wise, well as any gardener knows we are all waiting for Mother Nature to breathe her magic into the soil, so we have a while to go yet. So I asked the others present what could I write about? My colleague opposite said you can tell readers that we are in the process of making new planters (planned for March). Also mention that we need help from the younger healthy members of the village to dig out all the soil from the planters before we make the new

ones – **ANY VOLUNTEERS!! Phone Dave 272901.** Lastly, mention that Penny had seen two rare birds in her garden last week, they were Lesser Redpoll's (see photo).

OK I've done that, now what? I then asked 'can I write about something else?' 'Yes' said a voice on my right 'but don't mention any names'. Now sitting at home struggling to put pen to paper, I made my mind up. I'm going to tell you a story, a true story, which incidentally has an environmental touch to it.....



A STONEY TALE — A TRUE STORY...

We walk our two little dogs through the village toward Fosse Meadows most days, and on this particular day passing a neat and tidy front garden, Don (my husband) stopped, something had caught his eye. He called out "a-up Fran" that's my name, "a-up Fran, take a look at this". Nestling there among the neatly arranged gravel, next to a clump of vegetation, was a brown oval stone, the size of a mouse. It had two little painted black eyes, a button nose and a rosebud mouth. Don picked it up, had a good look at it and replaced it. Nothing more was said. When we returned home from our walk, I looked out of the kitchen window and saw Don digging up the back garden! I called out "what are you doing?" and he opened his hand and sitting there were two little stones. Out came the paint pot and in no time he painted the stones the same as the one we had seen earlier that day. When it became dark, Don went out the front door sneaked down the road and placed the 'two little ones' next to 'mum' in the gravelled garden. Now, unbeknown to us (until we were told later) the grandchildren of the house visited the next day, and excitedly informed the unsuspecting grandparents that 'The Stone' had produced babies overnight. Going outside to have a look, it was clear that there were now three stones snuggled together amongst the gravel. The owners of the house could only wonder who it was who was as daft as they were — it didn't take long!

From that little bit of 'daftness' these three little ones became the 'Stone Family'. Mrs Stone sent us a Christmas card that year and every year thereafter and us to them. During this time Mrs Stone informed us, through her landlord of course (!) that she needed a husband and father for her two children. We told them we were going to Skeggy the next week and promised we would leave 'no stone unturned' on Skeggy beach in our

SHARNFORD **EVERGREEN** **VILLAGE HALL**

**Refurbished Hall
with all equipment
Available for Hire**

**Telephone Margaret on
01455 274038**



search for a suitable husband and father. (Are you still with me? — crazy isn't it?).

Anyway true to our word, we spent the week looking but the stones were either too fat or too thin, or had chips knocked out of them. To cut a long story short when we returned back home, we were told that a suitable suitor had been found and that Mrs Stone was now married to Mr Granite. We have the wedding photos to prove it and it's attached here for you all to see! Mrs Granite looked radiant in her

veil and Mr Granite looked dapper with his dickie bow and wry smile, with the two little bridesmaids looking lovely in their gowns. You think I'm joking don't you! Then the next time you go out for a walk, have a good look around, they are there for you to see.

What's that Don — you've made the Horlicks, Ok Did you fill the hot water bottle — don't put so much gin in it this time — lights out I'm off - Ta-rah.....

Coming Soon

Sharnford Arts and Craft Social Group

We are creating a social setting in the new Youth and Community Centre for local crafters to come and work on their own projects in the company of other crafters.

So if you knit, sew, embroider, crochet; work with paper, felt, paint; make lace etc we would love to see you.

We plan to meet fortnightly and provide a craft ideas corner and light refreshments. We also hope to occasionally have speakers in to talk about their crafts or related topics.

Further information on start date etc will be advertised around the village, however we would like to hear from you if you are interested in joining us.

Please contact Kathy on 272335

SHARNFORD C of E PRIMARY SCHOOL

The children at Sharnford C of E Primary School gave brilliant performances in their Christmas production of 'The Little Shepherd' during an afternoon and one evening. A collection was taken and £199.05 was raised on behalf of Dreamflight, which is a charity that helps children with illness to be able to enjoy a special event. The decision to donate

to this charity was made by the School Council. Our thanks were sent to Mr & Mrs Wray for again donating a Christmas tree.

Children in year 4 have been learning to play either the violin or flute and parents were invited to a short performance. Year 3 Children are working with Diosing and will perform a choral production later in the year. Parents were invited to attend parents evening to discuss their child's progress and they will have another opportunity in March. Year 6 parents were invited to attend a meeting so that staff could inform them of the changes to this year's SATs, which will now include a grammar test. After school clubs included a multi-skills club for children in Reception, year 1 and 2, a Streetdance club for children in years 3, 4, 5 and 6 and football for boys and girls in years 5 and 6.

School visits have been organised to Leicester for years 3, 5 and 6; more details will be available in our next report. Children in year 1 and 2 will be attending All Saints Primary School when staff from Charnwood museum will be visiting and spending the morning with children from both schools with a travelling toy box. This session will allow the children to have the opportunity to investigate and play with a range of replica toys from the past and compare and contrast them with toys of today.

The PTA organised a Christmas disco for the children and a quiz night for adults. They continue to organise these events to raise much needed funds for the school. They are hoping to raise enough money to buy Kindles to use during assisted reading times.

We are collecting Nestle Box Top vouchers and Sainsbury's vouchers. If anyone has any spare please bring them in to school, we have been able to increase our books in the library from the Box tops and sports equipment from Sainsbury's.

We would like to thank all of our volunteers that come in to school to listen to the children read and help out in school.

Carol Proctor Secretary

HIGHCROSS OF YESTERYEAR

Bennonis - Venonae - Cleycester Civitas-.....these names have all been applied by learned historians to, as we know it today - Highcross. But in reality, these names could be open to conjecture - for these were taken from the 3rd. Century Antonine Itinerary - a surviving Roman register of the stations and distances along the various roads of the Roman Empire. The distances between these stations were measured in paces - here



Booth-IT-Solutions

'Your local, friendly and professional IT Provider for homes, schools and SMEs without the large retail price tag!'

Web Design · Network Installs ·
Consultancy · Tutoring · Upgrades ·
Repairs

To find out about our services and prices -
**Contact Darren Booth:- System
Engineer & LANTRA Qualified Trainer**

Covering Sharnford, Hinckley, Sapcote,
Broughton Astley & surrounding areas.

Tel ~ 07976 314975

Email ~ info@booth-it-solutions.co.uk

www.booth-it-solutions.co.uk

**SHARNFORD POST OFFICE
AND VILLAGE STORE**

Convenience Store, Newsagents
Gay and Eric welcome your Custom

**Grocery orders taken for free
home delivery**

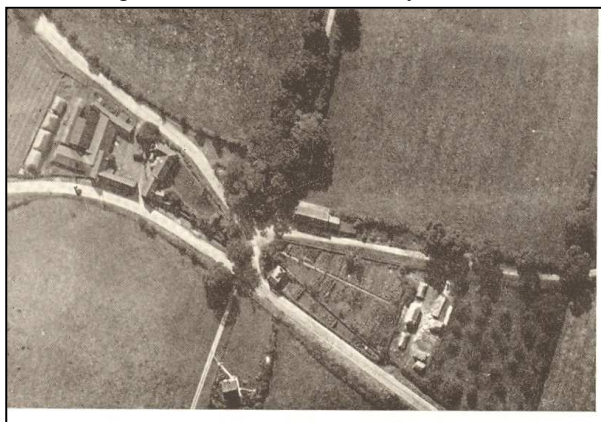
Open 7 days Tel. 01455 272210

London via Highcross to Lincoln - 156,000 paces. (measurement taken from Iter Britanniarum V1). Can you feel for the poor fellow who stepped that out?...49,567 - 49,568 -48,5 what? Damn. Damn. Damn.

By 1586 , however , Highcross had got its name sorted out, for William Camden published a book of his travels (titled 'Britannia') in which he says.....'the road ascends to High Cross so called from a cross that anciently stood there on high ground'.

That there was a Roman signal-cum-post station sited at Highcross is not in doubt. For this was the crossroads of two important major roads - the Fosse and the Watling. There have been quite a few archaeological excavations at this site over the years (mostly by gentlemen of private means). One of the first recorded in 1913 was by Mr. H Goodacre of Ullesthorpe (who was awarded the princely sum of £5 - but didn't receive it!) . The years 1929 to 1931 by Mr. A.J.Pickering of Hinckley (several excavations), the year 1955 Dr. G Webster (Birmingham University), and later in the year by Mr.E Greenfield (Ministry of Works). And somewhere in there, the boys of Rugby school who dug up the old rickyard of the Highcross House Farm!.

It is from the papers of Mr.A.J.Pickering (Transactions of the Leicestershire Archaeological and Historical Society 1933-34) that these 3 photographs are reproduced.



They date from about the year 1929. The commissioned aerial view shows how things have changed over the years since 1955, when road improvements were carried out to eliminate the dangerous S-Bend on the Watling (A5). Look closely - the Watling enters from the top left corner to exit at the bottom right. Centre at the top emanating from the trees-Copston road. Bumblebee Lane is a mere narrow track.

Highcross House Farm (as it was then) is on the left with the farmyard opening on to the Claybrook road..

The archaeological digs all produced strong evidence of Roman occupation with tiles, bricks, painted plaster, pottery, coins dating from the 1st. to the 4th. Centuries. Earlier occupation was noted with bronze and iron artefacts, worked flints and bone tools. All told, Highcross was a large busy and well populated post station for a few centuries-some say that it became a town - hence the name *Cleycester Civitas*. But what is intriguing is that normally with a Roman presence , successive centuries build upon these beginnings to become a town or city as we know it today. But no.....not in the case of



Highcross. food for thought there. From what is understood, Tony Robinson and the Time Team have been approached about doing a programme on Highcross. Perhaps their state-of-the-art ‘geophysics’ will be able to enlighten us some more in the near future.

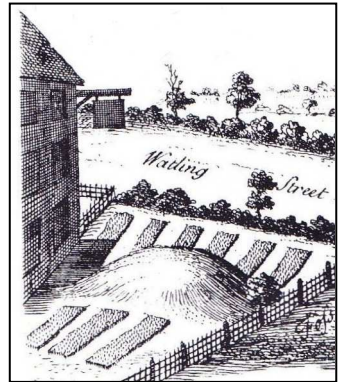
Photo (1929)-Highcross. The photographer is standing roughly where Tollgate Cottage is, right on the dangerous S-bend of the Watling Street that was eventually sorted out in

1955. Claybrooke road leads off to the left. Highcross House farm with the remains of the old monument peeping between the trees can be seen. The monument was built in 1712 as an edifice to peace after the end of the Wars of the Spanish Succession., yet another foreign imbroglio that did not particularly concern us. Then, as now, we seem to not to have learned a lesson.

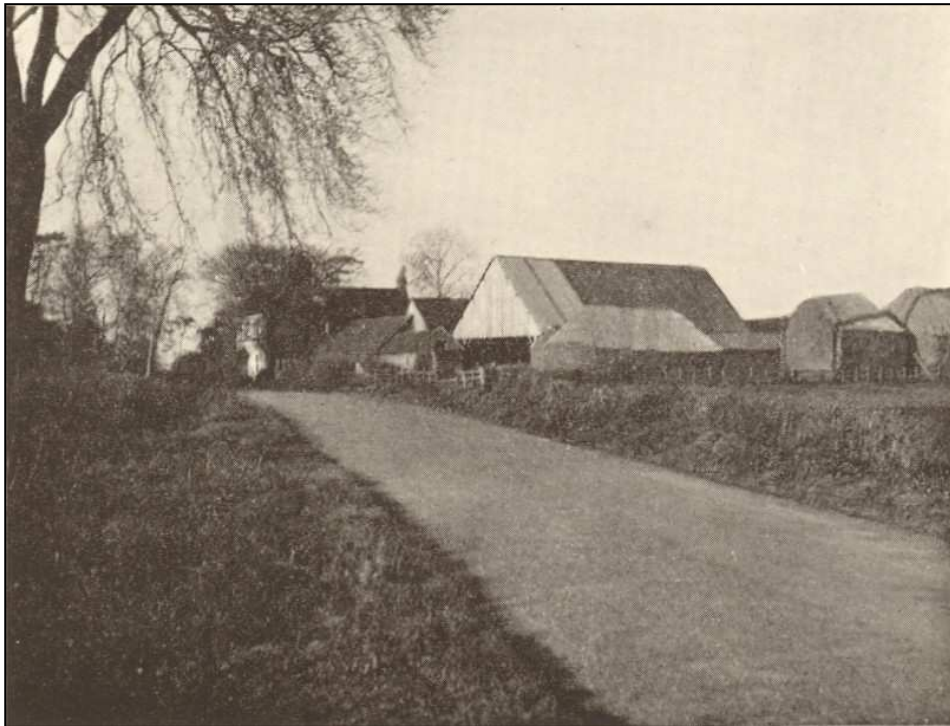
Highcross does have its darker side, for here also stood a well-used gibbet. The area behind the monument (now a garden cum car park) was a burial ground for the victims of the gibbet, for according to A.J.Pickering.....‘the finding of several skeletons in the garden enclosing the dilapidated monument in front of the farmhouse. These are not likely to have been associated with the Roman occupation. In view of the fact that the garden was once the part of the public highway, it is much more likely that they were the remains of unfortunate felons gibbeted at the cross roads’. One of these unfortunate felons was a man named Loseby, supposedly a murderer. (Bloxam’s notes)

Probably the gibbet explains the demise of the Sun Inn which stood where Highcross House stands today. A William Stukeley engraving from 1722 depicts the Sun Inn (here seen right). A gibbeting meant that the body of miscreant, who after being publicly hanged in the town after his trial, was transported to the gibbet nearest to the scene of his crime. The body was placed into iron strapping and left to decompose upon the gibbet as a warning to others. With a gruesome rotting cadaver close by at the cross-roads next to the pub, many would have been reluctant to have stopped there for a pint and a pie!!!

The Sun Inn faced south onto the old Fosse which by the time of this engraving was but a track. The ancient barrow seen here suffering somewhat from artistic licence was more distant than seen here. When it was removed and flattened the remains of skeletons were found along with grave goods.



And lastly - another photograph from the same 1929 series - here approaching Highcross from the south on the A5 Watling Street from the direction of Lutterworth.



BLABY DISTRICT COUNCILLOR REPORT

Customer Service Excellence Standard - BDC are continuing in providing an excellent service to its customers and submitted themselves to an external assessment at the end of Jan 2013.

The outcome was 'Excellent', BDC being part of an elite group of only five other authorities in the country. BDC are the first in Leicestershire to have submitted the whole of the Council for this 'Customer Service Excellence Standard'.

Green Deal: BDC along with other councils in Leicestershire, have been successful in their application for £3 million to tackle fuel poverty and promote the Green Deal. The money will help up to 500 most vulnerable households in various projects ie Boiler repair, repair and replacement scheme, installation of solar panels and other projects.

Sport and Physical Activity Consultation: BDC is looking to the public to help with planning how sport and physical activity is delivered within the District. The Council receives funding from LCC, needs are identified, which is where the local residents come in. The consultation is available online or you can receive hard copies by contacting the Health and Leisure team on 0116 272 7703.

New Revenues System Goes Live: From 10th December both Revenues and Benefits have been utilising the same system to process Council Tax and Benefits. This will help the services to be delivered to customers more effectively.

Community Safety Consultation: It is a legal requirement for the partnership to consult with local people every year, to establish what they feel are the top community safety priorities for the area. This will be carried out over a six week period from 28th January to 8th March. When all the data has been collated from the public consultation the team will meet to develop and revise the action plans that deliver the key priorities. As a result of the consultation the partnership will work actively in specific locations, target known offenders and work with local people to ensure confidence and satisfaction when dealing with crime and anti-social behaviour.

Cllr Sheila Scott, Cllr Ernie White and Cllr Iain Hewson

SHARNFORD LITTLE EXPLORERS PLAYGROUP

We finished 2012 with our Christmas concert and a party, which included a magical visit from Santa; a lovely end to the year. A big thank you must go to Santa, who made our day so memorable and an equally big thank you to our wonderful PTFA for the donations of presents for all the children. We are truly grateful for all the hard work everyone put in to make this term so special.

January saw the playgroup undergo a 3 yearly check by the Leicestershire County Council Early Years Inspectorate. The playgroup successfully retained its level of 2A, which is the highest a playgroup can be awarded. However it was recognised to have over 6 areas considered to be 'outstanding', many of those in 'Leadership and Management' and 'Enabling Environments'. This is the highest recognition the playgroup has ever achieved and we are absolutely delighted with the playgroup's success. The involvement of the PTFA and the excellent relationships we have with the parents in contributing to each child's learning was evident and really helped us to attain this acknowledgement of 'outstanding elements' so again a BIG thank you to everyone involved, including the children.

'Reduce, Re-use and Recycle is our theme for this term. With lots of wrapping paper and cards left over at Christmas we are focusing on the importance of recycling as much as we can. Thank you to everyone who has collected recycling items for us. The children enjoy this open ended part of their play and is offered every session, so we get through a lot of

Sharnford Little Explorers Playgroup

Evergreen Village Hall,
Sharnford, Leicester

Telephone Alison 01455 213779

www.leicestershirevillages.com/sharnford

Small, friendly playgroup

Awarded Good in all areas by OFSTED

(May 2009)

Open every day for 2 – 5 year olds

15 hours a week funding available for

children aged 3 - 4

Lots of fun activities

Parent and Tots Group Tuesdays 9.15am

recycled items! Cardboard tubes come in very handy for all kinds of crafts, so we are always grateful for those. We have talked to the children about recycling old or unwanted clothing and guided by our PTFA, it led to us raising £30 towards the Fireman's Charity through weighing in old clothes.

The playgroup PTFA consists of parents, friends and grandparents. We would very much welcome some extra help if anybody has some spare time? You don't have to have a child at playgroup. It may be that you are able to come and help sell cakes, bake cakes, or help with some craft activities or maybe read a story to the children? We would love to meet new members and you can choose what level of involvement you are able to give. If you are interested, please call us on 07896496403 or speak to Kathy Bryan who is our Chairperson.

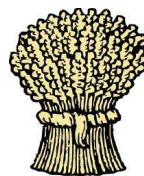
With half term already upon us, Easter will soon be here. Look out for us on our Easter bunny hunt!

Alison, Laura, Karen, Jenny and Clare

SHARNFORD GOLDEN JUBILEE COMMITTEE



Save the Date
Sunday 9th June 2013
Village Fete 'On the Farm'



The date is set for this year's Fete - Sunday 9th June 2013 12noon – 5pm. The theme will be 'On the Farm' with lots of related stalls and fun for all the family. We also hope to put on an evening event on Saturday 8th, please watch this space, the village website and notice boards for further information.

It is still not too late to join us at the organisation stage and meeting dates will be advertised around the village.

This year's AGM saw a number of changes to the make up of the committee. We would like to thank all those who have stepped down for all their hard work; dedication; commitment and not least time given over the past 10 years and wish them all the best. We look forward to seeing them at the Fete.

Frazer Edge also stepped down as Chair, but remains on the committee, and we are all very grateful to him for his continued support and all the work he and Julie have put into the Fetes. Sara Jackson has taken on the role of Chair whilst Dave Hounslow is now Treasurer and Kathy Bryan remains as Secretary.

We also welcome new members to the committee, Pat Gibbs and Ian Pickering, and look forward to their fresh ideas and input.

The final thing to say is that despite being beset by bad weather and date changes, the 2012 Fete events were still able to raise £200 for each of the 10 contributing groups, and these dividends were warmly received by representatives at the AGM.

Chair

SHARNFORD METHODIST CHURCH

Minister: Revd. Barbara Bircumshaw Tel: 634168

Regular Activities to which all are welcome:-

Morning Service – Each Sunday at 10am.

Evening Service – 3rd Sunday at 6pm.

Thursday at Ten - Last Thursday of each month at 10am.

Coffee Morning - 1st Saturday of each month at 10 – 11.30am.

United Fellowship - 2nd and 4th Thursday of each month at 7.30pm.

Craft Group – 1st and 3rd Thursday of each month at 7.30pm. February – November.

With crocus and snowdrops showing their faces and several days of sunshine, we are reminded that spring is on the way and Easter will soon be here. During the wet, grey days before and after Christmas, our activities included several well attended celebratory services. After packing our own shoe boxes, the craft group finished 2012 checking, sealing and despatching a total of 1250 boxes from the Hinckley area, giving Penny time to reclaim her dining room in time for Christmas dinner. After a short break we are back in business – so the begging bowl is out again. We would be grateful for any contributions such as wool, plastic video cases, boxes or anything you think we might find useful.

Last autumn several members attended a talk about the Hinckley Food Bank, since when, together with many other churches in the area, a collection point has been set up at the chapel. Donations of non-perishable, in date, food are always needed. If you would like to contribute but don't come to chapel, any member would willingly pass them on or they could be left with me – at 19 Brookfield (274374).

As I mentioned in the last issue of Sharnford News, we need to raise funds for work on our building. Our first project is to refurbish the kitchen. We have already installed a new window, but now need to replace the units. The present ones, which were begged and fitted for us by a former minister, Rev Jesse Parkins, have served us well for many years but really need updating. To this end, instead of the usual coffee morning on August 3rd, we will serving afternoon teas in the Evergreen Hall. Details will follow in the June Issue, but please put this date in your diary.

As always, we offer a warm welcome to anyone who would like to join in our activities and wish you all a happy Easter.

Maureen Butcher

SHARNFORD TRAFFIC ACTION GROUP

Pollution Monitor

This has been moved to its new location near the Evergreen Hall, and is finally working and monitoring pollution levels in that area.

Blaby Core Strategy

The strategy has now been signed off. An unexpected development is that the inspector is intending to link the development requirements of individual fosse villages with those of similar sized settlements in the Blaby area. Just how this will affect Sharnford is unknown at this time.

Blaby South Forum meeting

Sir Clive Loader – Police and Crime Commissioner for Leicestershire Constabulary has accepted an invitation to attend the autumn meeting. The date will be confirmed in the next issue for those wishing to attend.

LCC Conservative Group

The group has placed a Sharnford bypass as one of its priorities.

BUMPS, BABIES AND TODDLERS

Sharnford Bumps, Babies and Toddlers meet Tuesdays 9am-10:30 during term time at the Evergreen Hall. Please note that 5th March will be a special coffee morning with a cake sale in aid of Comic Relief, all welcome.

Support Ian's Fundraising efforts for - CHILDREN WITH CANCER

Ian Pickering is running the Virgin London Marathon this coming April for Children with Cancer.

It is something he has wanted to do for years, and made the decision to apply for a place a couple of years ago. He was delighted to be given the chance to take part this year and also raise awareness and some much needed funds for his chosen charity, Children with Cancer. Ian is now well into his training regime and tells us why he is putting himself through all this pain at the age of almost 45.

“The kids I have met over the years who'd battled and beaten Cancer, and those who had not. I can still remember the names of the Children we'd got to know a little, whilst visiting my wife's brother in the Leicester Royal Infirmary many years ago whilst having treatment himself at the age of just 12, they had been so young, so cheerful and hopeful, whilst undergoing terrible discomfort during they're treatment, they were really an

inspiration, and I'll always remember that time with great sadness. Thankfully, Jo's brother Matt, is now a fit and healthy 40 year old!

The pain and devastation that the families with children who have this terrible disease have been through, are going through and will go through, put's all of life's problems into perspective, our house being flooded out last year,



STANTON TAXIS

(of Stoney Stanton)

01455 27-21-89

Local & Long Distance
Holiday Destinations
Airports, Seaports
4 - 8 Seats Available

stantontaxis.co.uk

07760 767 046

Ian Pickering
p h o t o g r a p h y

portraits weddings commercial

t. 01455 271371 e. ian@ianpickering.com

www.ianpickering.com

and whilst devastating to us at the time, it is nothing compared to what many families are going through up and down the country. I feel very fortunate to be alive and running!"

Not only as a personal achievement for Ian has had to raise a massive £2500 for his efforts, again, having to ask friends, family and colleagues for their help in raising this money. Most of you will probably remember a couple of years ago, Ian and a friend, helped kick start the fundraising towards to the Build of the new Sharnford Youth Club, raising almost £1500 by running between Coventry and Leicester. The timing of the training/running/fundraising has now coincided with the completion of the Building due to open shortly, Ian has decided to host a Big PARTY at the new Youth club Community building on Saturday 23rd March. There will be a disco, live music, bar, food and a close-up magician. Tickets are for sale now for at just £10 for adults and £5 for children and we'd like at least 100 people to come along and have a boogie and just a good night out! All ticket sales proceeds will go towards Ian's Chosen Charity, and there will also be a raffle.

They are welcoming as many of the village to attend, but we must sell tickets in advance, so we know how many to expect and to cater for. So please contact Ian on 07515 877171 or Jo on 07837 190106 for your tickets.

We are also contactable via email to ian@ianpickering.com

If you cannot attend the party on the 23rd and would like to donate a raffle prize, we'd love to hear from you. All donations would be gratefully received.

Some of you may wish to sponsor Ian for his efforts, and you can do so through the virgin giving page, where 100% of your donation goes direct to the Charity uk.virginmoneygiving.com/runpickorun

Thank you

PARTY TIME!

At the new
Sharnford Youth & Community Centre
On Saturday 23rd March 2013
7:30pm til Late....

In aid of Children With Cancer UK



£10 Adults £5 Children - including Hot Roll

Tickets from Ian or Jo on 07515 877171

or email: party@ianpickering.com

Magician, Live Music & Disco, Bar

Event Sponsored by Ian Pickering

Photography

All monies raised go to Children With Cancer

SHARNFORD YOUTH CLUB

There have been many times over the last 3 years when Sharnford Youth & Community Hall Rebuilding Committee have struggled to keep focused as it seemed harder and harder to collate the finances to get this project complete. But with determination and perseverance the doors are finally ready to open to the people of Sharnford and beyond.

The first Youth Club session will take place on Friday 1st March and will run from 6.30pm - 8pm where the members and their families will get a chance to see the finished article. We're very excited and looking forward to getting back to our regular Youth Club

night, as well as getting ideas on what the Youth of Sharnford want out of their new building.



This is where we ask for your help. We now need to put together a strong Youth Club Committee incorporating a Management Committee to help with the running of this fantastic facility. If there's anyone out there who has a couple of hours a week or month free, please get in touch with me on 01455 271321.

Make sure that you put Sunday 14th April firmly in your diary and join us between 2pm and 5pm for our Grand Opening.

Julie Edge Chairperson

PLANT SALE - SATURDAY 18TH MAY



This year's plant sale will be at the Evergreen Hall from 9.30am on Saturday 18th May. We took over from the Evergreen Ladies last year and what a year to start! We had a cold spring for raising seedlings and I bet you did not have to water your plants very often once you had purchased them! It was a good job we bought in bedding plants from Four Winds, with their heated greenhouses they were able to supply plants ready to plant.

We will again be having bedding plants from Four Winds and thank them for their support in this venture. We could not raise so many fine bedding plants ourselves. Last year you told us you wanted more trailing plants so we have tailored our order to reflect what sold well and what we did not have enough of. We will also have a good selection of Vegetable plants and some speciality plants, though perhaps not so many. In our enthusiasm we planted enough runner beans last year to supply the County! The photo shows mixed flowers supplied to The Sharnford Arms which made a good display all season.

Refreshments will be available, as usual catering is in the capable hands of the Evergreen Ladies. Any profits we make will go to village causes. See you on the 18th May

Tony Curtis

SHARNFORD FLOODING INVESTIGATIONS

We have been advised by the Parish Council that the Environment Agency will be arranging a meeting in Sharnford to discuss their findings on the floods last October. For residents wanting to attend, please check the village notice boards, where the date will be advertised as soon as it has been finalised.

WINTER TYRES

What a miserable winter so far. I have been thinking about getting a set of winter tyres for some years but I never got round to it. Then last year a change of car made me think again. If a newer car was going to be with us for 3 to 5 years or more we would get enough use out of winter tyres to justify the cost.

The first thing to say is that winter tyres, whilst very good in snow are not just for Snow, (or Ice) but any time the temperature is below about 7° C. The rubber on summer tyres becomes too hard and inflexible as temperatures fall. Winter tyres are more flexible and provide better grip in cooler temperatures. The tread pattern (the sipes or grooves) is better at clearing snow. I found a set of steel wheels with new winter tyres for Janet's Fiesta on Ebay for £250 and got the village garage to swap over from the Summer to the Winter tyres back at the end of last October. The immediate benefit was now having a spare wheel (one of the summer wheels). Like a lot of modern cars the Fiesta did not have a spare wheel, just a can of gunk, not much use if you get a serious gash in your tyre.

The second benefit is that because the tyres are taller being 175/65x14" as opposed to the summer 195/45x16" they ride better over pot holes. Modern low profile tyres are not good at soaking up bumps and pot holes. The two sizes are within 0.17% total diameter of each other so there is no effect on the speedo.

The third benefit is that the summer alloys are not getting corroded by salt whilst the winter steel wheels are on and you do not have to worry about accidental kerbing damage to the same extent.

Fourth benefit, whilst you have the winter tyres on, say from late October to early March your summer tyres are not getting any wear so once you have made the initial investment it will be a couple of years longer before you need to buy any more tyres. So over the life of ownership the cost is minimal.

However the big plus is that leading motoring journalist say that a two wheel drive car with winter tyres will cope better with snow and ice than a 4x4 with bling wheels and tyres and at

RUSSELL BURROWS Plumbing & Heating Services

Central Heating Gas Installation
Bathrooms Leadwork
Roofing & Building Services

Maintenance Servicing & Repairs

Gas Safe No.185016

Tel: 01455 271441

Mobile: 07947 787455

Fax: 01455 271553

a fraction of the cost, I would now agree. Following on from getting the Fiesta sorted for winter I have now got a set for my car and can report similar benefits. My previous car was a 4x4, I would say the grip on my FWD car with winter tyres is as good.

We have certainly been impressed with the handling in the snow. In Germany it is the norm for car owners to have a set of winter wheels/tyres since it is mandatory to use winter tyres when it is icy or there is snow. Do tell your insurance company, but following agreement with the ABI there will not be any extra premium to pay.

The downside is storage of the wheels not is use and the upfront cost. Now is the time to start looking if you are interested and certainly by September before the best deals disappear. If you go for smaller wheels with taller profile tyres you might well find that winter tyres are actually cheaper than your usual tyres.

Tony Curtis

BLABY DISTRICT COUNCIL WINS GOVERNMENT GRANT

Blaby district's new refuse and recycling scheme, which launches this year, will now include weekly recycling collections instead of fortnightly. The Council has received £2 million funding from the Government's Weekly Collection Support Scheme, which will allow it to retain weekly recycling collections for at least five years. It also means a reduction of only two posts as opposed to the eight posts that were to be originally lost in the move to a fortnightly mixed collection.

The original plan for the new scheme was to continue weekly refuse collections, but for recycling to be collected fortnightly with residents receiving a larger 240 litre wheeled bin. Weekly collections will utilise the existing 140 litre bins that residents already have, removing the need to supply everyone in the district with larger bins. This will make the change over to the new system much simpler and easier to manage.

Councillor Guy Jackson, Portfolio Holder for Regulatory and Neighbourhood Services said: "During the two trials conducted earlier this year, the preference from residents was clearly for weekly recycling collections and many expressed a desire to keep the current 140 litre bins. "It is therefore brilliant news that we are now able to do this, as well as being able to retain more of our staff than originally thought. Blaby District Council will be one of very few council's providing a weekly service for both refuse and recycling for the foreseeable future."

The new scheme will allow residents to put all their cans, plastics, paper and cardboard into the same wheeled bin, and offers environmental improvements by reducing the number of vehicles and the amount of fuel used, and providing less congestion on the roads.

For more information on the new scheme visit www.blaby.gov.uk.

ALL SEWN UP!

 CLOTHES ALTERED
TO SUIT YOU 

Most alterations and repairs
undertaken. Curtains shortened

For a friendly, professional
service

**Tel: Tracey Avis in Sharnford
on 01455 274833**



at



Saturday 23rd March & Sunday 24th March Open Day and Easter Egg Hunt Weekend

Our Easter Egg Hunt is open to all children. Every child will be able to choose to plant either a Geranium or Argyranthemum and take it home to grow on. We make a small charge of £1.00 with the proceeds being given to Rainbows and Arthritis Research. For adults and child minders there will be a free to enter Prize Draw, Refreshments and an opportunity to have a look round at some of the changes we've made for this year. Plus you can see some of our early new stock. This year we have many new varieties to tempt you. So come along to discuss your gardening needs with our friendly and helpful staff.



Website: www.fourwindsnurseries.co.uk

Email: info@fourwindsnurseries.co.uk

Coventry Road, Sharnford Tel: 01455 221005

Open 7 days - Mon- Sat 9-5.30, Sun 10.30-4.30

COUNTRYMAN SICK & DIVIDEND FUND

I would like to thank the following local businesses for their continued support of the Countryman Sick and Dividend Fund: the Countryman Inn, the Sharnford Arms, Sharnford Garage, Sharnford Post Office, Sharnford Tractors, Ian Pickering Photography Studio, Four Winds Nursery, the George & Dragon at Broughton Astley, Whetstone Co-op and also many of the local supermarkets for their help in providing many of the 50 prizes in our Christmas raffle. I would also like to thank the local residents of Sharnford who donated prizes.

A special thank you goes out to what can only be described as “Ace” ticket sellers as without their contribution we could not have funded the distribution of 130 plus Christmas goody bags in what was the 75th year of the Fund. Many of the tickets were sold outside of Sharnford, resulting in prizes being won as far away as Redhill in Surrey and Milton Keynes. More local prizes were won at Hinckley Working Men’s Club where over 100 books are sold each year. Broughton Astley also saw quite a few prize winners as a result of a charity stand at the local Co-op. Without these tickets sales it would have been virtually impossible to achieve a “sell out” following the setback of flooding at the Countryman, one of our main local sales outlets, back in November last year. And lets

not forget the equally important sales outlet of Sharnford Post Office where many local ticket sales are made and also the ticket sales that were made at the Evergreen Hall at one of their famous “Bacon Butty” mornings.

Several letters of thanks have been received thanking the Committee for its input and commitment to organise and deliver the Christmas goody bags to many villagers. To quote just one letter “Thank you so much for the wonderful pack of goodies delivered to me before Christmas, the contents of which have been very much enjoyed. I appreciate and thank you for the time and effort that is put into organising the gift.”

Jack Feast

**W J EDGE & SON
BUILDERS LTD**

**33 Henson Way
Sharnford Leics**

All types of building work and
renovations undertaken

For a free estimate call us on
Home 01455 271321 or Mobile
07831 181079

CRICKET SEASON IS AROUND THE CORNER

Rain stopped play far too often in Sharnford Cricket Club’s 2012 season with nearly 50% of the fixtures being lost to the bad weather and flooding. So its cricket bats crossed for sunny weather in 2013.

The new season starts with the 1st team taking on Stoke Golding at home on Saturday 27th April and the 2nd team starting 1 week later.

We are always looking for new players. Why not join us at the indoor nets at Bounce Cricket in Nuneaton every Saturday morning between 10:00 -11:00 or at the outdoor nets at the cricket field after Easter.

If anyone has time to volunteer in helping us with the maintenance on the cricket ground, cricket pitch or pavilion, we would be most grateful - especially after a financially crippling 2012 season with so many matches called off.

For more information call Rich Jones on 07825-300190

MEMORY ADVISORY SERVICE



If your memory is not as good as it used to be and if you are experiencing any of the following symptoms:

- Struggle to remember recent events but can recall things in the past
- Find it hard to follow conversations or T.V programmes
- Forget the names of friends or everyday objects
- Cannot recall things you have heard, seen or read
- That you repeat yourself or lose the thread of what you are saying
- Have problems thinking and reasoning
- Feel anxious, depressed or angry about your memory loss
- Find that people are starting to comment on your memory loss
- Feel confused even when in a familiar environment

Contact your local G.P practice.

My name is Kay Snowdon and I am the Memory Advisor for Blaby.

This service is provided by the Alzheimer's Society in partnership with Leicestershire County Council and Leicestershire Partnership Trust. It will be available from April 2013, to all patients registered with a GP in Leicestershire, who have had a diagnosis of dementia.

As a Memory Advisor, I will be able to provide information, advice and support to people living with Dementia and their carers.

The overall aim of the service is to help people stay at home for longer, to live a happier more active social life and to help plan ahead rather than reaching crisis point.

My contact details are: Tel: 0116 231 6921 email:kay.snowdon@alzheimers.org.uk

Kay Snowdon, Memory Advisor Blaby, Memory Advisory Service, Alzheimers Society



ELIZABETH HEXTALL

Woodwind and Keyboard Tuition

**Flute ~ Clarinet ~ Saxophone ~
Recorders Electric Keyboard**



Theory of Music ~ All Ages ~

All Stages –

All Exam Boards Catered for

~ Established 1990

7 Coventry Road Sharnford

LE10 3PG

Tel 01455 271233

HELP FOR HEATING REPAIRS

More help is at hand for people living in Blaby district who are in need of a heating repair or replacement boiler. Blaby District Council has grants available until the end of March for fire and boiler servicing, boiler repairs and new boilers. The funding is available to home owners, tenants, those over 60 years old, disabled, and/or families.

To check eligibility or to apply for a heating grant, contact the housing options team on 0116 272 7536 or email housing.adaptations@blaby.gov.uk

PROGRAMME OF ACTIVITIES TO HELP RESIDENTS GET ACTIVE

A packed programme of fun physical activities begins in January to encourage Blaby district residents to get active, starting their new year's plans for getting fit on the right foot. Monday January 21 will also see the start of Move More 4 Less Week, where a range of activities across the county will be available for only £1. January will also see the launch of the Active Together Workplace Challenge, aimed at local organisations and promotes a more active lifestyle with innovative methods to stay active.

Darren Farish, physical activity development officer at Blaby District Council, said: "This year we have a massive range of activities on offer with the hope there is something to suit everyone. The launch of Move More 4 Less could not come at a better time and allows people to try out new activities for only £1. "After the indulgence of the festive season, making a new start towards a more active lifestyle can put you on the right track to enjoy improved health benefits, quality of life and overall wellbeing."

People can keep up to date with activities and events across Blaby district by following Active Together Blaby on Facebook and Twitter.

To advertise in the next issue of **SHARNFORD NEWS**
please contact Angie Timson-Jones on 271561

Editorial Team: Dave Sewell 272901, Angie Timson-Jones 271561
and Jean Ryan 615820

Answers to Quiz:- 1. The Spirit of Chartwell, 2. Lonesome George, 3. Curiosity, 4. Ashley Young and Ashley Cole, 5. Sir Sean Connery and Sir Alex Ferguson, 6. In an unmarked police car, 7. Bradley Wiggins, 8. Sylvester Stallone, 9. Maeve Binchy, 10. Mo Farah, 11. Judy Garland's Wizard of Oz dress, 12. Daniel Craig, 13. Liam Neeson, 14. Christopher Plummer, 15. Costa Concordia, 16. British Grand Prix, 17. Italy, 18. 1908 and 1948, 19. Third, 20. Extinguishing the Paralympic flame.