

SHARNFORD NEWS

31st May 2012

Issue No 42



A Project supported by Community Action, Blaby District Council.
Available at www.leicestershirevillages.com/sharnford/Sharnford-News-online.

VILLAGE FETE POSTPONED

STOP PRESS new date – Sunday 23rd September 2012

As many of you will have become aware, the Fete has been postponed from the 27th May. The Golden Jubilee Committee did not take this decision lightly and it followed a full discussion of the options open to us.

The new arrangements are as follows:

There will be a Jubilee Tea in the Evergreen Hall on Sunday 27th May, from 2.30 until 4.30pm. Tea, coffee and cakes will be available for purchase. A Jubilee craft table will be provided for children, with colouring, make your own crown and make your own jubilee friendship band available for a small donation. The Environment Group's "Lucky Dip" Quiz will also provide some fun for the youngsters.

The Fete Raffle draw will take place at 4pm. We have had some very good prizes donated in the past weeks, so make sure you are "in it to win it". Tickets remain available around the village for purchase from the Post Office, the Pubs and members of the Committee.

The Duck Races will be postponed until the Fete on September 23rd and ducks will continue to be available between now and then. All ducks already sold will remain valid for the Races on that day.

We will be putting on all the familiar and well-loved stalls and will still need your generosity of donations, including Bottles, Tombola Prizes, books and Toys. These can be brought to Soarbrook House in Chapel Street, or contact Kathy on 272335.

SGJFC

SHARNFORD PARISH COUNCIL

The AGM of the Parish Council was held on 17 May 2012.

Chairman, Mrs Angela Timson-Jones, expressed her thanks to members who had volunteered to form a Council once it had become clear that there were insufficient candidates for a Council to emerge from the 2011 elections. Mrs Timson-Jones spoke of the involvement of many Councillors in the various



Many thanks to Mark Randall at Sharnford Garage for agreeing to fly the Parish Council's Union Flag, throughout the Jubilee and the Olympics.

groups that are active within the village and of the consequent cohesiveness this brought.

Although coming to Parish Council involvement for the first time, she said that she had been pleased to take on the Chairmanship with the help and support she had received and spoke of her appreciation of the regular attendance at Parish Council meetings of District Councillors Sheila Scott and Iain Hewson, keeping members aware of Blaby District affairs affecting our activities.

She reported that the new Burial ground had been completed and was now in use, and spoke of the progress being made on the new Youth and Community building, now expected to be completed by the Autumn, supported by the Parish Council's financial arrangements. The hoped-for extension and refurbishment of the Children's Play area in Park View Recreation Ground had suffered a set-back but some aspects were progressing. An Affordable Housing proposal had been examined and was likely to become a feature within the village in the comparatively near future, when County funding became available to subsidise it.

Parish Council representation had continued at the Fosse Villages Neighbourhood Planning group and Blaby South Forum – both very important to ensure that Sharnford's interests are not overlooked as developments occur around the region. An active part continued to be played in monitoring Planning Applications affecting the village especially, at that time, those relating to the Biodigester and Hovercraft Racing at The Shade.

Through STAG, PTA and Youth Club Committees the Parish Council had continued to be actively supportive of the Community. STAG were currently in consultation with County Highways to try to get a 20mph speed limit implemented through the village, a suggestion which had secured the support of Andrew Robathan MP.

At the completion of the AGM members elected officers for 2013:

Chairman: Mr Derek Gibbons Vice-Chairman: Mrs Angela Timson-Jones

SHARNFORD PRE-SCHOOL PLAYGROUP

We are pleased to welcome Laura Pegg into our Playgroup. Laura is taking over as Manager of the setting in September, as Cath is retiring at the end of Summer term. Laura has many years experience in day Nurseries and is spending time this term familiarising herself with our ways and meeting the families. Please feel free to introduce yourselves.

Last term we had a visit from Rosie the lamb and we had fun making our own versions of lambs. We also met Rosie the rabbit and some baby chicks, baby ducks and a mother Hen. We would like to extend our sincere thanks to those parents for supporting us in this



Residential Property Lettings and Maintenance

Your local independent firm specialising in Residential and Property Management. Our knowledge of the local property market, combined with experienced and friendly staff, enables us to offer an enviable service to all.

Full Management **£30 a month** fixed fee*

Thinking of selling or renting? We also provide
Energy Performance Certificates for £35

Website: www.millanepropertymanagement.co.uk

Email: info@millanepropertymanagement.co.uk

Tel. 01455 274253 Mobile. 07852 513413

*(subject to terms and conditions)

BURBAGE PLAYGROUP

**EXPERIENCED PROPRIETOR
EXPANDING AND BRINGING A NEW
PLAYGROUP TO BURBAGE**



OFSTED REGISTERED

BASED AT THE SCOUT HALL, BRITANNIA ROAD

**OPEN MONDAY TO FRIDAY, 9.15AM TO 2.15PM
FUNDING AVAILABLE FOR 3 AND 4 YEAR OLDS**

**REGISTRATION NOW OPEN - CALL ALISON ON
01455 213779 OR 07816 971471**

shared learning where the children were able to handle and feed the animals. The children really benefited from these experiences and are still talking about them now. The term ended with a fabulous egg hunt in the garden and then the children took part in a bonnet parade and ate a party lunch.

We are now investigating mini beasts including the life cycle of butterflies from egg to caterpillar to butterfly. We are re-enacting the Hungry Caterpillar story and a story sack is available to borrow for home learning. We are also making egg box spiders and using this to help us with mathematics. We are counting up to eight for the spider's legs and then dividing them into four for each side. Try and find areas within the home where mathematics and numbers can be used. We are learning about symmetry and painting on one side of the paper and folding it to see the mirror

image. We will be looking at how this also applied to ladybird's spots. Karen is in the kitchen this term and will be assisting with the making of butterfly cakes.

On May 30th, we are holding our Olympic Sports (weather permitting) at Poors Meadow. Everyone is welcome to come along and join in the fun. There are lots of opportunities to join in, even if it's just holding the finishing line. The children are also busy talking about the Diamond Jubilee and we are having a special jubilee lunch to celebrate. We will soon start to make bunting, crowns, flags and a Royal Collage. If you have any items that can help us make these, please bring them to the Hall for us. After half term, we will end the term talking about holidays and enjoying a Pirate and Princess party.

The PTA is busy arranging a trip to Hatton Gardens for us, and we would like to thank them for their hard work again this year.

Alison, Cath, Laura, Karen, Lyn, Emma and Kate.

SHARNFORD PLAYGROUP PTFA

We have had another successful term and this summer term we are looking forward to providing the children of the Playgroup with a trip to Hatton Farm Village.

Our coffee mornings have again been well attended and we would like to thank all those in the village who have made the time to come along and support us (and hopefully have enjoyed the home-baked cakes). There will be no more coffee mornings until September and we will publish dates for these in the next issue of Sharnford News. Please watch this space.

Kathy Bryan

Continuing at the Top

Onwards and Upwards

THE QUEEN'S DIAMOND JUBILEE CELEBRATIONS ON 4th JUNE 2012

BEACON LIGHTING AT HIGH CROSS

The Roman Venonae Settlement at High Cross, on the Leicestershire/Warwickshire boundary is the Centre of Roman England (CORE), marking the junction of the Roman Watling Street with the Roman Fosse Way. Looking east from High Cross the next highest point is the Ural Mountains; the more immediate panorama takes in four counties and, until recently, 57 church towers could be seen on a clear day.

The Warwickshire parish of Copston Magna, being the closest village to the CORE, plans to raise the profile of this historic area in honour of The Queen's Diamond Jubilee. The parish has registered for an official beacon to be lit at the CORE on 4th June 2012, ignited by an arrow fired from a bow by the Earl of Denbigh. This will take place during an evening of celebration of our monarch's Diamond Jubilee, being arranged to take place that evening at High Cross.

Copston Magna has invited all surrounding parishes to join in with this once-in-a-lifetime Diamond Jubilee celebration. With the kind help of The Friends of Jewry Wall Museum, the evening will include family entertainment with a Roman theme. There will also be a programme of music covering each of the decades of Her Majesty's reign. Locally brewed beer, hot pork rolls and homemade stuffing with apple sauce, together with vegetarian options, will be on sale from 6pm onwards. People are invited to bring their own tables and chairs to enjoy the event in total comfort. Ample parking will be available.

Entrance will be by ticket only, at £5 for adults and £1 for children under 16. In Sharnford the tickets are available from the Post Office and from Mike Bishop on 272393. Alternatively, see information on posters around the village.

The Official Beacon Lighting Ceremony will begin at 10pm. Bruno Peek, The Queen's Pageantmaster, is very interested in the significance of the High Cross location. We

therefore hope to succeed in our aim to raise the profile of the CORE, nationwide! The CORE Beacon will be one of the 2,012 or more beacons being lit around the world and we very much hope you will join us in our celebration on this unique and very special occasion.



This memorable event has already received significant support from local businesses and individuals. In particular, TNT UK Ltd has made a significant contribution towards the staging costs. All proceeds from the event will be used to provide a new Information Board for the CORE, to provide details of this historic area and include a transcript of the High Cross Monument inscriptions, which are virtually illegible on the Monument as it now stands. Hopefully, sufficient funds will also be available for at least the much-needed maintenance and, potentially, complete restoration of the Monument.

This monument is listed under English Heritage Ancient Monument 136; (List Entry No 1003566). Part of this monument's 300 years old inscription, translated, states the following:

...“The noblemen and gentry, ornaments of the neighbouring counties of Warwick and Leicester, at the instance of the Right Honourable Basil, Earl of Denbigh, have caused this pillar to be erected in grateful as well as perpetual remembrance of peace at last restored by Her Majesty Queen Anne, in the year of our Lord 1712.”...

Albeit this pillar/monument was initially ordered in 1712, erected in 1722 and was struck by lightning in 1791, one third of the original stone monument still remains at High Cross; many artifacts from around High Cross can be found in neighbouring museums.

Ultimately, in honour of Her Majesty The Queen and to commemorate Her Majesty's 60 year reign over the UK and as Head of the Commonwealth, with our continued peace, we hope to raise sufficient funds to commission an additional monument to be erected at the CORE. To secure the amount of public funding required, we have to demonstrate widespread community support for this project and we will need to raise

ALL SEWN UP!



**CLOTHES ALTERED
TO SUIT YOU**



Most alterations and repairs
undertaken. Curtains shortened

For a friendly, professional
service

**Tel: Tracey Avis in Sharnford
on 01455 274833**

substantial funds ourselves. Local business sponsorship and private donations will all be very gratefully received. Pre-orders are now being taken for a Commemorative Coin which has been specially designed, depicting the High Cross Monument in its original glory. (see drawing adjacent)



The amount of encouragement, help and support received to date clearly indicates that the plans meet with the majority approval. Significant levels of support and financial contributions have been made over the very short time this event has been in planning. It has been truly overwhelming how many generous offers have been received from local services, business sponsorships and very kind private individual donations. Indeed, with the generous support from TNT UK Ltd, we are 'sure we can' achieve our aims. All proceeds from the evening will now help fund a QUEEN ELIZABETH II - MONUMENT AT THE C.O.R.E. - FANTASTIC NEWS!

Should you require any further information or wish to offer support in any way on 4th June 2012 please feel free to contact me. Rachel Holloway. 01455 220788 rachel@holloway.net Coordinator for the Copston Magna/High Cross Queen's Diamond Jubilee Beacon

ST. HELEN'S CHURCH

The period between Christmas and Easter is always a busy one for our church. There are the Lent house groups, the participation in the Womens' World Day of Prayer service, the Memorial service, the mid week Communion Service every Wednesday in Lent and all the services over the Easter period. When Easter is over we usually get a bit of rest, but this year we are totally engaged in our funding programme now, and for the next few weeks to come. By this time everyone in the village will have received a letter explaining it and its purpose so I will say no more about this project.

There was one occasion, however, when we had a chance to relax and enjoy ourselves. At the invitation of our Rector, Mick, and his fiancée Denise the vast bulk of our congregation climbed into their vehicles (or begged a lift) and went over to a large hail in Rugby where a party was in full swing to celebrate Mick's engagement. Upward of 200 folk attended and we were

Sharnford Pre-School Playgroup

Evergreen Village Hall,

Sharnford, Leicester

Telephone Alison 01455 213779

www.leicestershirevillages.com/sharnford

Small, friendly playgroup

Awarded Good in all areas by OFSTED

(May 2009)

Open every day for 2 – 5 year olds

15 hours a week funding available for

children aged 3 - 4

Lots of fun activities

Parent and Tots Group Tuesdays 9.15am

RUSSELL BURROWS

Plumbing & Heating Services

**Central Heating Gas Installation
Bathrooms Leadwork
Roofing & Building Services**

Maintenance Servicing & Repairs

Gas Safe No.185016

Tel: 01455 271441

Mobile: 07947 787455

Fax: 01455 271553

able to dance or just simply listen to the music if our knees were a bit creaky, to enjoy a finger buffet and to find liquid refreshment at the bar. It was a totally happy and joyous occasion and on behalf of everyone that attended I would like to thank Denise and Mick for inviting us to share their special evening. As stated in the last edition of Sharnford News, Mick and Denise are to marry on July 15th, so let us all wish him well for that day and for lasting happiness thereafter.

Another special occasion was the day the Queen came to Leicester, We could not all be invited to attend the celebrations but Mick received an invitation to attend the service at the cathedral in the company of someone of his choice. That choice was our long-time Churchwarden, Billy Higginbotham. They were both thrilled and moved by this

once-in-a-lifetime inclusion in a royal event and Mick's choice was an excellent way of thanking Billy for all that he has done for St. Helen's throughout his life.

We have had three baptisms in the church. On March 4th Finnley Knight Herbert and on April 1st Ethan and Stephen Corley were welcomed to our flock by their baptism. Whilst mentioning children may we thank the Explorers for cleaning our church so beautifully for the Pascal season. St. Helen's also hosted a special service at term's end for years 5/6 of Sharnford School.

On the 4th May a funeral service was conducted for Jane Smith, the popular landlady of the Shamford Arms who died far too early in her life. Evidence of her popularity came in the form of the vast number of people who attended to bid their farewells to her. Our sympathy goes out to all who mourn her passing.

Finally, I have been asked to draw your attention to the notice in the church about Quiet Gardens. Various people in the county open their gardens in the summer months (their houses in inclement weather) to host a day of spiritual renewal and appreciation of beauty. This gives one time for quiet meditation in peaceful surroundings. If you would like to participate in such a day you can contact Mrs. Parkinson on 01509 827081.

Estelle Perrett

SHARNFORD POST OFFICE AND VILLAGE STORE

Convenience Store, Newsagents

Gay and Eric welcome your
Custom

**Grocery orders taken for free
home delivery**

Open 7 days

Tel. 01455 272210

Barlows
Solicitors LLP

Incorporating Barlow Poyner Foxon
Serving hardworking families and businesses since 1902

FREE home visits and city centre parking
can be arranged

Tel: (0116) 251 8295 • Fax: (0116) 253 7850

1 Berridge Street Leicester LE1 5JT
email: lbacon@barlowssolicitors.com
www.barlowssolicitors.com

FORWARD PLANNING BRINGS PEACE OF MIND

Local legal expert Lisa Bacon, a partner at Barlows Solicitors LLP, explains why it's important to make sure our legal affairs are in order.

Whatever our time of life, it's good to have the peace of mind that comes from knowing that our affairs are in order. Just a little time and thought now can avoid hassle and stress later down the line - just when we, or our family, needs it the least.

Talking to a legal expert is a good way of ensuring that all bases are covered, leaving you free to make the most of your precious family time together.

Things to be considered include making sure that you have an up to date Will and that a Lasting Power of Attorney is in place.

I live in Sharnford and am a partner at Barlows Solicitors LLP - one of Leicestershire's longest-established legal firms. Our family-run practice, established over 100 years ago, has a reputation for putting people first, pledging a high level of personal attention along with value for money.

With just a telephone call or an email, the firm can arrange for you to meet one of our well-qualified partners over coffee to discuss your legal needs. We can help you to plan for your children's security and what will happen to your estate, should the unthinkable happen, and we can put Lasting Powers of Attorney in place, should you ever need someone else to make decisions on your behalf.

We also offer a wide range of other services, including probate, divorce, civil partnership dissolution, property conveyancing and services concerning the protection of, and access to, children.

We offer free car parking, close to our offices in Berridge Street, Leicester, and we can arrange home visits for people who may find it difficult to get into the city centre.

For more information, or to make an appointment, please telephone us on: 0116 251 8295 or email me at: lbacon@barlowssolicitors.com. We promise to deal with your enquiry promptly and professionally. All fees are discussed with clients before any work is carried out, so there is no need to worry about unexpected charges.



Four Winds Nurseries & Garden Centre

GETTING READY FOR ... SUMMER

Four Winds

We have a large selection of Summer Basket Plants and filled Baskets and many types of Bedding Plants to give your garden a wonderful splash of colour. You will also find many types of Shrubs, Fruit Trees, Perennials, Herbs & Alpines, many of which are grown within our on-site nursery along with a variety of Composts to suit every need.

National Gift Tokens also available

Website: www.fourwindsnurseries.co.uk Email: info@fourwindsnurseries.co.uk

Coventry Rd, Sharnford LE10 3PG Tel. 01455 221005

Open 7 Days – Mon - Sat 9 – 5.30, Sun 10.30 - 4.30

POT LUCK TRIVIA

1. Britt Ekland played Anna in which 1971 film starring Michael Cain?
2. Which pop group released albums in the 70's including Ring Ring, Arrival and Voulez- Vous?
3. Which long running TV science programme uses an excerpt from Pelleas Et Melisande as its theme tune?
4. Ian Rush left Liverpool in 1987 to play for which Italian side before returning to Anfield one year later?
5. Which musical does the song 'Summertime' come from?
6. What sort of creature is a klipspringer?
7. At which film festival are the Golden Lions awarded?
8. Who was Mayor of New York at the time of the 9/11 terror attacks?
9. What name is given to the wind pattern that brings heavy rain to South Asia from April to September?
10. The Galilean satellites Io, Europa, Ganymede and Callisto orbit which planet?
11. Jack Ryan is the hero of a series of novels by which American thriller writer?
12. Keira Knightley starred in which movie as a real-life bounty hunter?
13. Where does the TV Simpson family live?
14. 'June is busting out all over' is a song from which musical?
15. A solander is a protective box made in the form of (a) a pyramid, (b) a book, (c) a segmented wheel?
16. In which London Church is Poet's Corner?
17. What are you in New Zealand if you are 'boohai'?
18. What sort of puzzle originated as education devices to teach geography?
19. Which port in North Yorkshire has associations with Captain Cook, and Dracula?
20. What is the name of the famous geyser in Yellowstone National Park?

Answers on back page

SHARNFORD ENVIRONMENT GROUP

Unusually this report starts with how the Group is financed. Whilst we have always in the past been successful acquiring grants to support capital projects, we often have problems meeting our regular revenue costs. These costs are mainly for plants for the hanging baskets, planters and Bluebell Green, but also maintenance tasks on our various projects. One source of regular income is from the Village Fete and this is supplemented by a contribution from the Parish Council as and when we request help. But we are particularly pleased this year to receive a £500 Revenue Grant from Blaby District Council via their Community Action Partnership. This will go along way to meeting our annual costs this year.

The hanging baskets are being planted and put up a week earlier this year - on 31st May, to ensure we have a display for the Jubilee celebrations being held during the first week in June. Not surprisingly our colour scheme this year is red, white and blue and should be quite a show. Our 19 volunteer waterers are getting ready to undertake their regular watering tasks, but we still require one more volunteer for the hanging baskets near the Evergreen. If you could help us with this position we would be most grateful. Please contact Mike Bishop (272393) or Dave Sewell (272901).

The planters are also being re-planted soon in the same colour theme. As a special show this year, Ron Mann is laying out his planter, the one coming into the village from Leicester, with a display of red, white and blue in the shape of the Union Jack. Look out for it in the next few weeks.

We have implemented the major change to the content of some of the beds on Bluebell Green to bring a little more variation to the shapes and colours this year. We have replaced some lost plants and spread another layer of bark on the front border. Our next task on the Green is to lay a product called strulch on the beds. This provides a cover to retain moisture in the soil and help prevent weeds from growing. Its expensive, but well worth it. We have recently started up a monthly working group to maintain the beds on Bluebell Green and it has made a big difference. This 'concentrated' effort has proved much more effective than members looking after individual plots.

Early ideas are being discussed for the design of the proposed Village Sign. One thing that has been decided is the location - it will be on Bluebell Green.

We completed the litter pick last month and whilst the majority of the streets were not too bad, Poors Meadow was particularly bad. Please can we remind everyone who uses that area to put rubbish in the bins provided, thank you. In June, the school children will undertake another litter pick, under the supervision of some of our members.

A number of large branches,

Ian Pickering
p h o t o g r a p h y

portraits weddings commercial

t. 01455 271371 e. ian@ianpickering.com
www.ianpickering.com

and other general rubbish, were noticed in the brook by Stella Woodier, who contacted the Environment Group for help. As we had to remind Stella, we have been prevented from working in the brook by the Environment Agency, mainly on the grounds of 'health and safety'. We used to clear it out annually, but that stopped years ago. Stella was able to arrange a visit by a man from the Agency, and he promised they would clear under the bridge and cut back some trees along the banks. They also said they would speak to some house owners who live along the brook, to ensure they understand the rules regarding not allowing branches etc. to fall into the brook. He noted that the banks behind the garage were excellent for wild life.

Environment Group Committee

SHARNFORD C of E PRIMARY SCHOOL

Here at Sharnford C E Primary School it has been a busy spring term. On 6th March children in years 2, 3, 4, 5 & 6 took part in World Maths day completing as many questions on the computer in a given time. The children were given login details so that they could practice at home as well as in school. Certificates were issued for the pupil who answered the most questions and the most improved. World book day was celebrated and all children received a £1 voucher which entitled them to a free £1 book or £1 off a book or audio book worth £2.99 or more. School Food Support offered the children a special World Book Day menu of Chicken Licken Pie, Stone Soup, Worm Spaghetti, Hungry Caterpillar salad, Oliver's Vegetable Selection, Carrot Batons, Peas, Chips, James' Giant Peach Crumble & Custard, Charlie's Chocolate Crispy or Horrid Henry's Mum's Carrot Cake.

We had a visit from a dentist who checked the teeth of all 5 year olds in school and years 3 & 4 children enjoyed a Faith Stories trip to Leicester where they visited a Sikh temple, Jain temple and Leicester Cathedral. The children listened to stories from the different religions and took part in different activities, they showed great respect for the different places of worship and were extremely well behaved.

Conkers After School Club

All Saints Church Hall, Sapcote

**October 2010 awarded 'GOOD'
in all areas by OFSTED**

Come along and join our After School Club



**Crafts, DS, Wii
& Laptops**



**Table football Outdoor Activities
Cooking Games Competitions**

Come along and have fun with us

Open Mondays 3pm – 6pm during term time
for all children aged 4 to 12 years

£3 per hour or £6.50 for a 3 hour session
Discounts available for siblings
Childcare vouchers accepted

**Contact Alison on 07816 971471 for further details
OFSTED Registration number EY404111**

Children in years 1 & 2 visited Tamworth Castle to enhance their learning of castles, they explored the Castle, met with household staff, handled armour, costume and household objects. Parents evening took place during March and was very well attended. Class photographs were taken, a copy of which are in the library area for all to see. Mother's Day Service took place in the school hall and the whole school walked to St Helen's Church for the Easter Service.

Children raised money for Sport Relief by participating in sporting events on the school field, buying chicks on behalf of Loros, ordering plants from C D Bell & Son Ltd and donating clothing for Ragtex, who send items to developing countries. We also took part in Leicestershire County Council's small electrical recycling day.

Parental Questionnaires have been forwarded to parents, the outcome of these will be reported in due course.

The PTA organised an Easter party for the children and donated £800 to the school to enable resources to be purchased. Our thanks go to the PTA for their continued hard work in raising much needed funds for our school. We are collecting vouchers from Sainsbury's, Tesco and Nestle box tops, if you have any spare please send them in to the school office. Our thanks go to parents and Governors who volunteer and give up their time to help in school.

We would like to welcome parents, friends and members of the community to visit school on Tuesday 29th May from 3.15pm – 6pm for our open afternoon. Refreshments will be available and you will be able to visit the school and grounds.

Carol Proctor, Admin Assistant

SHARNFORD PRIMARY SCHOOL PTA

The PTA Easter Party was held the week before the end of the spring term. We had a really good turn out and the children had a great time dancing and playing games; wrapping up mummies with loo roll being a highlight!

As in previous years we ask the school if there is anything in particular they would like for the children and this year we have been able to help with more books and phonic materials - This wouldn't be possible without the continued support of so many of you, so a big thank you to you, and another big thank you to the members of the PTA who give up their time to organise all this.

Next up for us is the Jubilee Workshop at the end of May and then it won't be long until it's time for the Leavers Disco, so look out for more information in the weekly school newsletter.



STANTON TAXIS

(of Stoney Stanton)

01455 27-21-89

Local & Long Distance
Holiday Destinations
Airports, Seaports
4 - 8 Seats Available

stantontaxis.co.uk
07760 767 046

One last thing ... We're always looking for new people to join the PTA, so if you have children at the school and think you can help in anyway, please come along - We usually meet in the pub, which is a bonus!

Chair, School PTA



*C. A. Page Building Contractors
are pleased to announce the opening of the
JTL Kitchens and Bedrooms Showroom at
Rugby House, Hinckley Road, Sapcote LE9 4FU*

on Saturday 9th June 2012



We can give you a complete solution - including design, installation and all the tiling, plumbing, electrical and building work. Or we can supply only or design and supply.

Call us on 01455 271423

E mail- jtlkitchensandbedrooms@yahoo.co.uk

Web- www.jtlkitchensandbedroomsltd.co.uk

SHARNFORD BUMPS BABIES AND TODDLERS GROUP

We have been pleased to welcome some new parents and children to our Tuesday mornings. The children have been able to take part in some craft activities, including making presents for their mummies for Mothering Sunday and joined in the music sessions at our coffee mornings. This term we are looking forward to joining the Playgroup at their Jubilee Street party.

We welcome mothers-to-be and babies through to pre-school-age toddlers. Our hours are 9-10:30am during term-time Tuesdays. We will not be open on 5th June and our last session before the summer holidays will be on 10th July.

Kathy Bryan

**W J EDGE & SON
BUILDERS LTD**

**33 Henson Way
Sharnford Leics**

All types of building work
and renovations undertaken

For a free estimate call us on
Home 01455 271321 or Mobile
07831 181079

**UPDATE FROM YOUR BLABY DISTRICT
COUNCILLORS – MAY 2012**

Your councillors have had another good year working hard for the betterment of your village and the ward. One of our aims has been to continue to visit, and participate in the Parish Council meetings each month. We are happy to take on board your comments and concerns and act accordingly. By now you are probably aware that Blaby District Council are operating a 'Freeze' on Council Tax for a further year.

The project between Blaby District Council and Lloyds Bank to help first time buyers onto the housing ladder continues to be a very successful venture. This enables people to fulfil

their dreams of owning their own property within Blaby District.

The District Council has been running a trial on 're-cycling' in Leicester Forest East and Narborough areas. This could mean that a split-bodied vehicle could take both black and green-lidded bins at the same time on the one lorry, enabling both bin types to be emptied on a weekly basis. When all data has been collated the Council will be in a position to decide if this system could be worked across the District. All Parish Councils will be updated with information on completion of the trials and receipt of feedback to the Council.

As councillors we are pleased with the progress of the new Youth and Community Building, and look forward to the completion and opening of this project later in the year.

The planning application received by Blaby District Council relating to the increased activities of the 'Hovercraft' business at The Shades, Coventry Road, Sharnford, has now been withdrawn.

Please remember that as your councillors we are here to listen to your concerns, our details are as follows:

Cllr Ernie White BDC and CC 01455 272136 e mail: ernie.white@leics.gov.uk

Cllr Sheila Scott BDC 01455 272450 e mail: sheilascott333@btinternet.com

Cllr Iain Hewson BDC 01455 273957 e mail: iain.hewson@btinternet.com

Best wishes to you all, have a lovely summer.

Ernie, Sheila and Iain

SHARNFORD EVERGREEN CLUB

Sharnford Evergreen Club continue with their fortnightly tea meetings held at the Evergreen Hall. The meetings start at 7.00pm and are now enjoyed by over 30 members.

Our members will be enjoying a trip to Chester for the day on the 23rd May. We have also booked a river cruise in Nottingham on the 8th August, including lunch.

We are sad to report that one of our members, Mr Roy Lawson, passed away on the 13th April. We send our sympathy to Irene and all the family. Roy will be sadly missed by all who knew him at the Evergreen Club.

Sadly, on the 21st April, Jane Smith from the Sharnford Arms also passed away and are thoughts go to Steve and members of Jane's family. Jane and Steve have been very generous supporters to the Evergreen Club in recent years.

Our tea meeting to be held on the 6th June will start at 3.00pm and will be a Jubilee Celebration Tea. The Hall will be decorated by the Playschool and, weather permitting, we will hold our party outside.

Karen Smith, Chairman

SHARNFORD
EVERGREEN
VILLAGE HALL

**Refurbished Hall
with all equipment
Available for Hire**

**Telephone Margaret
on 01455 274038**

**THE HARRIS FAMILY AND THE SHADES
COVENTRY ROAD - SHARNFORD**

From the late Jean Philps' superlative book - a Pictorial History of Sharnford - page 123 comes this beautifully atmospheric photograph entitled 'The Unionists at a garden party at the Shade - 25 May 1911'. (Courtesy of Mr. & Mrs. Lee Philps). Big hats, bombazine blouses, puffed sleeves, big skirts -- a time when the school classroom globe of the world was covered in big swathes of Empire pink. Who were the Unionists? I am not sure - perhaps about Irish Home rule (a very big issue in 1911), the Coronation of George V and Mary (22 June 1911), temperance or suffrage.... I see that their menfolk are noticeably absent.



Our second photograph is by courtesy of Mr.& Mrs. Jake Cooper of the Shades, undated, but similar time and occasion, with several of the same ladies and the same carpet in both photographs. ...Where are all the menfolk?. I wonder if Eliza Ann Godfrey, licensee, (1911) of the Old Star Inn - today's Sharnford Arms - could possibly be providing refreshments. Were the lady and the females of the house present in this photo? Who were they?..... the story of the family at the Shades begins to unravel.



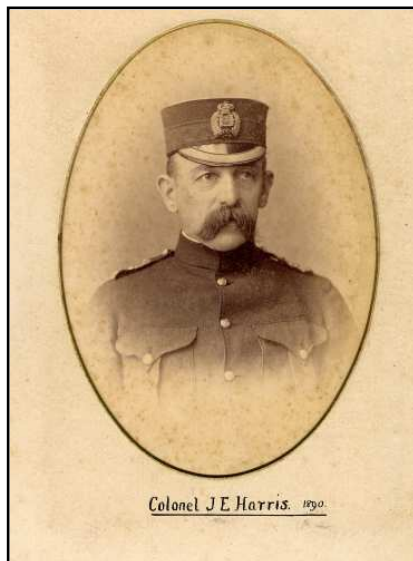
From the 1911 census (taken 2nd April 1911 - we see the entire Shades household - the ladies of the household being Rose Harris (60). daughters Constance (29), Violet (28), Beatrice (27), Theodosia (25). In all probability, one or more of these ladies are present in both photos. There were 3 servants - a cook and 2 parlourmaids. One of these maids, Eliza Peatt (23) was Sharnford born. Only one gentleman, Colonel James Edward Harris (72), husband of Rose, appears on the census. Two children family members are missing from this census, daughter Rose C.S Harris (1882) and the only son, Percy (1889). A tragedy unfolds here, for Captain Percy Cuthbert Harris, 1st. Battallion, Suffolk Regiment (his father's old regiment), was killed in action at Ypres on the 17th February 1915 at the age of 26 years. There is an inscription to Capt.Harris on the Menin Gate (Ypres) memorial, Panel 21. Also on our own village monument to the fallen in St.Helen's churchyard.

Colonel Harris was born in Sharnford - a village boy that certainly made good. Registered as born in the last quarter of 1838, James Edward was the 3rd eldest child of Thomas James Clarke Harris, Justice of the Peace, and wife Elizabeth Gwyn Thomas, curator of the Suffolks Regimental Museum, provides us with J.E's early military career. His family bought him a Ensign's commission (1860) Lieutenant (1862) Captain (1868). His marriage to Rose Harriette Theodosia Meade (28th.Sept. 1880), granddaughter of General Hon. Robert Meade, elevated him to the peerage (Burkes Peerage, Baronetage

and Knightage). Promotion followed rapidly: Major (1881), Lt.Col. (1886), Appointed a full Colonel 1st. April 1890 (London Gazette). By the 1st. April 1892 Col. Harris was on half-pay and was not mentioned on the active list after 1897 (London Gazette). He and his family were living at this time at Cedars, Alderton, Suffolk (1901 Census).



Captain P.C.Harris – K.I.A 1915



Colonel J.E.Harris

Between the years 1901 and 1911 the Harris family returned to the Shades, Sharnford. Extracts here from the 1877 edition of Whites Directory and Gazatteer courtesy of John Rowley of Fields Farm..... ‘The Shade, a spacious mansion with well-wooded pleasure grounds, about a mile from the village, is the seat of Capt. J.E.Harris (12th.Regiment) and was rebuilt in 1843 by the late Thomas Joseph Clarke Harris, Esq.,J.P’..... ‘a principal landowner in the parish is Captain J.E.Harris’. At Wigston Parva, Captain Harris, is also mentioned as landowner. All the above, points to the fact that the Shades never left the Harris family.

Part two to follow in the next issue of Sharnford News.

ST. HELEN’S LADIES GROUP

The meeting in March was a very fun-filled evening with members taking part in Laughter Yoga with Marlies Flintham. Laughter Yoga is a combination of laughter, exercises and yoga breathing to increase the supply of oxygen to the body and brain, which gives a ‘feel good’ factor. In April Penny Ross gave a very interesting presentation on her visit to a school in Nepal. The difference in living standards was very noticeable, but the children benefited from having a good education. A teacher from Nepal made a return visit to Penny and her school in Earl Shilton. Jayne Good from Broughton Astley joined us in May with a ‘Joy Of Painting’ demonstration. Her paintings are based on the work of the late Bob Ross who used brushes very like the ones we use to decorate our

homes; her mountain landscape was very good. Jayne assured us that we could do one like hers too!! The group are looking forward to June when we shall join the Evergreen Club for a Jubilee celebration tea, followed, in the evening, with a visit to Hinckley Museum. The July meeting is a BBQ at the home of Jan Sewell 7.30p.m.

Visitors are always welcome at our meetings and further information about the group can be obtained from the Leader, Pat Jordan, telephone 272229.

Jean Ryan

Sharnford Garage Ltd

M.O.T. WHILE - U - WAIT

**We test cars, light vans,
motorbikes and 3 wheelers**

**Full Service & Repairs on all
makes Petrol and Diesel**

Courtesy Cars Available

**Leicester Road, Sharnford -
01455 272336**

POLICE UPDATE FOR SHARNFORD

I am pleased to report that crime has been very low in Sharnford since my last report. However, I would like to remind workmen to ensure their tools are not left on show in vehicles and ideally not left in vans overnight unless secured in a garage.

Residents are being encouraged to register their property on a national property register which is free and supported by UK police forces. Members of the public can log on to www.immobilise.com to register the serial numbers of expensive items such as tools, televisions, laptops, mobile phones and MP3 players. Alternatively, I would advise using SmartWater, which is a clear, water-based solution that is simply painted on to an item. Each brushstroke contains microscopic particles encoded with a unique SmartWater identification number (SIN), which is only visible under ultra violet light.

Each SmartWater pack is unique to the owner of that property. It can be used to visibly mark everything from jewellery to electrical equipment and anything else of value. The details are kept on a national database and if the property is ever lost or stolen, and then recovered by the police, it can be easily traced back to its rightful owner. SmartWater can be purchased by residents of Blaby District for £5.00 from Braunstone Police Station, Hallam Crescent East, Braunstone, during its normal opening hours (Monday – Friday 10am to 2pm and 2.45pm to 6pm except bank holidays) or contact your local neighbourhood officer on www.leics.police.uk. For more information about SmartWater visit, www.smartwater.com

Finally, please be extra vigilant to anyone and anything looking suspicious and report it to the police.

You can follow your local beat team for updates on Twitter, just log on to LPFosseVillages or to leave a message for an officer, call 101 and when prompted enter the officer's identification number. For PC Rob Weston enter 1275 or for PCSO Alex Joule enter 6075.

PC Rob Weston

ELIZABETH HEXTALL
Woodwind and Keyboard Tuition
Flute ~ Clarinet ~ Saxophone ~
Recorders Electric Keyboard

Theory of Music ~ All Ages ~
All Stages -
All Exam Boards Catered for
~ Established 1990
7 Coventry Road Sharnford
LE10 3PG
Tel 01455 271233

PLANT SALE

By the time you read this you will, we hope, have bought lots of plants from the Plant Sale on the 19th May. It was a hard act to follow after the brilliant performance put in by the Evergreen Ladies every year. One of this year’s good causes which we hope to support is the Church Fundraising Campaign, so a “thank you” goes to everyone who supported the Plant Sale.

We got most of the bedding plants from Four Winds and would like to thank them for their help and support. We grew the veg ourselves and a selection of flowers. Herbs by Stella Woodier. We could not have

managed without Rosemarie Simpson’s greenhouse.

So now get growing! We want to see your largest Sunflower and longest Bean entered in the Village Show on the 8th September. All of you who entered last time should have had a Show Guide delivered. Guides are available from The Post Office, Four Winds or any of the Show committee. See you all on the 8th September at the Show.

Sharnford Village Show

SHARNFORD YOUTH CLUB

In the past three months we have made significant progress with our funding for the new building, provided by lots of support from both county and national charities, for which we are most grateful. We can now see the light at the end of what has been a long, long tunnel. As we move into better weather, if that ever happens, we should be able to complete the installation of the roof, the doors and windows by the end of June. Our aim now is to complete the building ready for use by the time of the Fete in September. After that, the children can start to flourish in their new surroundings, which they much deserve. The photo below shows the progress to date.



SHARNFORD METHODIST CHURCH

Minister: Revd. Barbara Bircumshaw Tel: 634168

Regular Activities to which all are welcome:-

Morning Service – Each Sunday at 10am.

Evening Service – 1st & 3rd Sunday at 6pm.

Thursday at Ten – Last Thursday of each month at 10am.

Coffee Morning - 1st Saturday of each month at 10 – 11.30am.

United Fellowship - 2nd and 4th Thursday of each month at 7.30pm.

Craft Group – 1st and 3rd Thursday of each month at 7.30pm. February – November.

TAKE STRIDES TO ENJOY LEICESTERSHIRE DURING WALKING MONTH

People are being urged to put their best feet forward and celebrate National Walking Month by exploring Leicestershire.

The County Council is urging residents to get fit and enjoy the great outdoors, as well as consider leaving the car at home and walking instead where possible. People can also take part in the Great British Walking Challenge and log the miles they have clocked up by visiting: www.livingstreets.org.uk. Lesley Pendleton, County Council Cabinet Member for Environment and Transport, said: “We would like to encourage people to think about leaving the car at home for local journeys and consider walking instead. “A brisk walk boosts the body and mind. Experts say it’s a natural way to be more physically active - exercising without knowing it, and ideal when done outdoors in a green environment. “Not only that, but Leicestershire has some 1,879 miles (3,024km) of Rights of Way and some fantastic walks to explore. “We hope more people will sample them this May and help celebrate National Walking Month.”

For more information on walking in Leicestershire visit: www.leics.gov.uk/walking and for more on the council’s Choose How You Move campaign, which encourages people to get fit, have fun, help the environment and save money, visit: www.leics.gov.uk/choosehowyoumove

To advertise in the next issue of **SHARNFORD NEWS** please
contact Mike Bishop on 272393

Editorial Team: Mike Bishop 272393, Dave Sewell 272901
and Jean Ryan 615820

Answers to Quiz

1. *Get Carter*, 2. *ABBA*, 3. *The Sky at Night*, 4. *Juventus*, 5. *Porgy & Bess*,
6. *Antelope*, 7. *Venice*, 8. *Rudi Giuliani*, 9. *Monsoon*, 10. *Jupiter*, 11. *Tom Clancy*,
12. *Domino*, 13. *Springfield*, 14. *Carousel*, 15. *(b)*, 16. *Westminster Abbey*, 17. *Lost!*
18. *Jigsaws*, 19. *Whitby*, 20. *Old Faithful*